

## Product datasheet for **MR204877**

### **B3galnt1 (NM\_020026) Mouse Tagged ORF Clone**

#### Product data:

Product Type:	Expression Plasmids
Product Name:	B3galnt1 (NM_020026) Mouse Tagged ORF Clone
Tag:	Myc-DDK
Symbol:	B3galnt1
Synonyms:	B3galt3; b3GT3
Mammalian Cell Selection:	Neomycin
Vector:	pCMV6-Entry (PS100001)
E. coli Selection:	Kanamycin (25 ug/mL)
ORF Nucleotide Sequence:	>MR204877 ORF sequence Red=Cloning site Blue=ORF Green=Tags(s)

TTTTGTAATACGACTCACTATAGGGCGCCGGGAATTCGTCGACTGGATCCGGTACCGAGGAGATCTGCC  
GCC**CGATCGCC**

ATGGCCCCGGCTGTCTTGACTGCCCTTCCCAATAGGATGTCACTGAGATCCCTCAAGTGGAGCCTGCTGC  
TGCTGTCCCTGCTGAGCTTCTGGTGATATGGTACCTCAGCCTCCCCACTACAATGTGATCGAGCGCGT  
CAACTGGATGACTTCTATGAGTATGAGCCAATTTACAGACAAGACTTTCGTTACAGCTCCGCGAACAC  
TCGAAGTGTTCATCAGAACCATTCTGGTCATCCTGGTGACCTCACGCCCTCAGATGTGAAAGCCA  
GACAAGCCATTAGAGTACTTGGGGTGAGAAAAAGTCCGGTGGGGATATGAGGTGCTCACGTTTTTCTT  
ACTAGGCCAGCAGGCTGAAAGGGAAGACAAAACGTTAGCCCTGTCCCTGGAGGATGAGCAGGTTCTCTAT  
GGTGATATTATACGGCAAGACTTTCTAGACACATATAATAACTTGACCTTGAAAACCATATGGCTTTCA  
GGTGGGTAATGGAGTTTTGCCCAATGCCAAGTATATTATGAAAACAGACACTGATGTTTTCATCAACAC  
TGGCAATTTAGTCAAGTATCTTTAAACCTAAACCACTCAGAGAAGTTTTTACGGGCTATCCTTAATT  
GATAACTATTCATAGAGGATTTTCCATAAAAACCATTTTATACCAAGAGTACCCCTTCAAGGTGT  
TCCCTCCCTACTGCAGCGGGCTGGGCTACATTATGTCCGGCGACCTGGTCCCAGGGTCTACGAGATGAT  
GAGTCAGTGAAGCCCATCAAGTTTGAAGACGTTTATGTTGGCATCTGTTGAATTTGTTAAAAGTGGAC  
ATTCATATCCAGAAGACACAAAACCTTTCTTTCTGTACAGAATCCACTTGGATGATGTCAGCTCAGAC  
GCGTGATTGCAGCCCATGGCTTTTCTTCCAAGGAGATCATCACATTCTGGCAGGTGATGCTGAGGAACAC  
CACATGCCATTAC

AG**CGGACCG**ACGCGTACGCGCCGCTCGAGCAGAACTCATCTCAGAAGAGGATCTGGCAGCAAATGATATCC  
TGGATTACAAGGATGACGACGATAAGGTTTAA



[View online »](#)

**Protein Sequence:** >MR204877 protein sequence  
 Red=Cloning site Green=Tags(s)

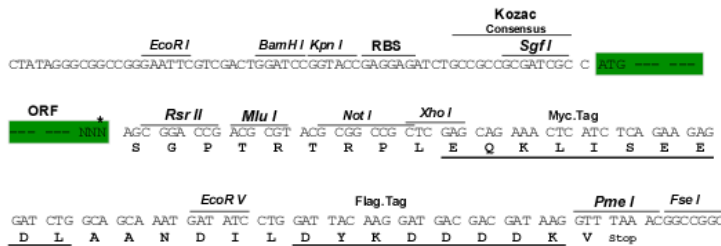
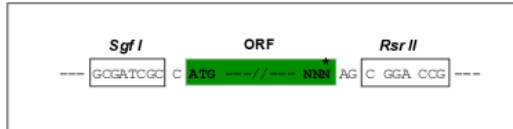
MAPAVLTALPNRMSLRSLKWSLLLLLLSLSFLVIWYLSLPHYNVIERVNWMYFYEYEPYRQDFRFTLREH  
 SNCSHQNPFLVILVTSRPSDVKARQAIKRVTWGEKKSWSWGVEVLTFLLGQQAEREDKTLALSLEDEHVLVY  
 GDIIHQDFLDTYNNLTLKTIMAFRWVMEFCPNAKYIMKTDVDFINTGNLVKYLNLNLHSEKFFTYPLI  
 DNYSYRGFFHKNHISYQEYFPKVFPPYCSGLGYIMSGDLVPRVYEMMSHVKPIKFEDVYVIGICLNLKLV  
 IHIPEDTNLFFLYRIHLDVQCQLRRVIAAHGFSSKEIITFWQVMLRNTTCHY

SGPTRTRPLEQKLISEEDLAANDILDYKDDDDKV

**Restriction Sites:** SgfI-RsrII

**Cloning Scheme:**

Cloning sites used for ORF Shuttling:



\* The last codon before the Stop codon of the ORF

**ACCN:** NM\_020026

**ORF Size:** 996 bp

**OTI Disclaimer:** The molecular sequence of this clone aligns with the gene accession number as a point of reference only. However, individual transcript sequences of the same gene can differ through naturally occurring variations (e.g. polymorphisms), each with its own valid existence. This clone is substantially in agreement with the reference, but a complete review of all prevailing variants is recommended prior to use. [More info](#)

**OTI Annotation:** This clone was engineered to express the complete ORF with an expression tag. Expression varies depending on the nature of the gene.

**Components:** The ORF clone is ion-exchange column purified and shipped in a 2D barcoded Matrix tube containing 10ug of transfection-ready, dried plasmid DNA (reconstitute with 100 ul of water).

**Reconstitution Method:**

1. Centrifuge at 5,000xg for 5min.
2. Carefully open the tube and add 100ul of sterile water to dissolve the DNA.
3. Close the tube and incubate for 10 minutes at room temperature.
4. Briefly vortex the tube and then do a quick spin (less than 5000xg) to concentrate the liquid at the bottom.
5. Store the suspended plasmid at -20°C. The DNA is stable for at least one year from date of shipping when stored at -20°C.

**RefSeq:** [NM\\_020026.1](#)

**RefSeq Size:** 2283 bp

**RefSeq ORF:** 996 bp

**Locus ID:** 26879

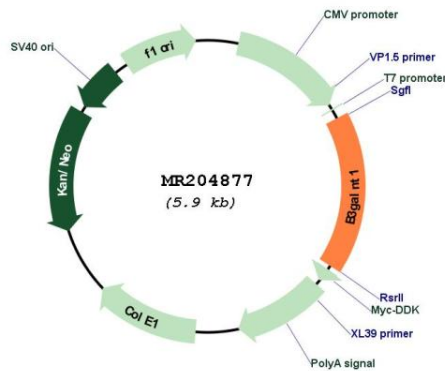
**UniProt ID:** [Q920V1](#)

**Cytogenetics:** 3 E1

**MW:** 39.4 kDa

**Gene Summary:** Transfers N-acetylgalactosamine onto globotriaosylceramide (PubMed:9417047). Plays a critical role in preimplantation stage embryonic development (PubMed:11463849). [UniProtKB/Swiss-Prot Function]

**Product images:**



Circular map for MR204877