

Product datasheet for **MR204876**

Spsb3 (BC072556) Mouse Tagged ORF Clone

Product data:

Product Type:	Expression Plasmids
Product Name:	Spsb3 (BC072556) Mouse Tagged ORF Clone
Tag:	Myc-DDK
Symbol:	Spsb3
Synonyms:	SSB3, mKIAA4204
Mammalian Cell Selection:	Neomycin
Vector:	pCMV6-Entry (PS100001)
E. coli Selection:	Kanamycin (25 ug/mL)
ORF Nucleotide Sequence:	>MR204876 representing BC072556 Red=Cloning site Blue=ORF Green=Tags(s)

TTTTGTAATACGACTCACTATAGGGCGGCCGGAATTCGTCGACTGGATCCGGTACCGAGGAGATCTGCC
GCC**CGATCGCC**

ATGCGGGCTGTGGCTCTGGCAGGCAGCTCTAACTGGGGCTATGACTCTGATGGGCAGCACAGCGACTCCG
ACTCTGACCTGAGTACTCCTCCCTGCCACCATCCATCCCCAGTGTGTGCCTGTGACAGGAGAGTCCTT
CTGTGACTGCGAGGGCCAGAATGAGGCTACCTTCTGCAACAGTCTGCACACAGCACACCGTGGCAAGGAC
TGCCGGTGTGGTGAAGGATGAGGATTTGATTGGGTCTGGGATGACCTGAACAAGTCTCAGCCACCT
TGCTGAGCTGTGATAATCGCAAGGTCAGCTTTCACATGGAGTATAGCTGTGGCACTGCAGCCATTCGGGG
CACCAAGGAGCTAGGGGATGGCCAACTTCTGGGAAATCAAGATGACCTCTCCAGTGTATGGCACAGAC
ATGATGGTGGGCATTGGGACGTCGGATGTAGACCTGGACAAGTACCACCACAGTCTGCAGCCTGCTGG
GCAGGGATGAGGACAGCTGGGGGCTCTCTACACTGGGCTCCTCCACCACAAAGGTGACAAGACGAGCTT
CTCTTCACGCTTTGGCCAGGGCTCCATTATTGGTGTGCACTTGGACACCTGGCATGGGACACTGACATTC
TTCAAGAACAGGAAGTGCATAGGAGTGGCTGCTACTCGGCTTCAAACAGAAAGTCTACCCGATGGTTT
GCTCCACGGCTGCCAAGAGCAGCATGAAAGTCAATCCGCTCCTGCGCCAGCTCCACATCCCTGCAGTACCT
GTGCTGTACCGCTTGCGCCAACTGCGGCCAAATTCAGGGGACACCCTCGAGGGCCTGCCCTTGCACCT
GGCCTCAAGCAAGTGTGCATAACAAGTGGGCTGGGTTCTGAGCATGAACTGCAACCACCTGGAAATCCC
CTGTGCCCTCCTGGCACAGCTACACCTGGTGCCGAGAGTCTGGAGACCAGGCCCTGTCAGAGGAAGCG
CTGCCGAAGAAGC

ACGCGTACGCGGCCGCTCGAGCAGAACTCATCTCAGAAGAGGATCTGGCAGCAAATGATATCCTGGATT
ACAAGGATGACGACGATAAGGTTTAA



[View online »](#)

Protein Sequence: >MR204876 representing BC072556
Red=Cloning site Green=Tags(s)

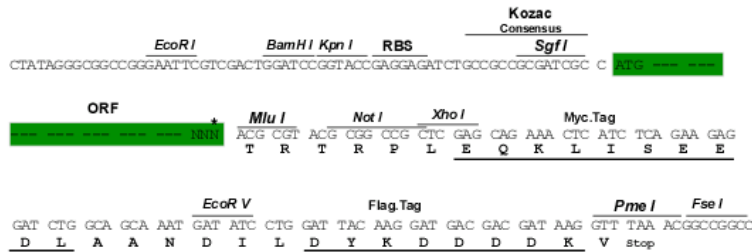
MRAVALAGSSNWGYSDSQHSDSDSDPEYSSLPPSIPSAVPTGESFCDCGEQNEATFCNSLHTAHRGKD
 CRCGEEDDFDWVWDDLKSSATLLSCDNRKVSFHMEYSCGTAAIRGKELGDGQHFWEIKMTSPVYGTD
 MMVGIGTSDVDLDKYHHTFCSLLGRDEDSWGLSYTGLLHHKGDKTSFSSRFQGSIIIGVHLDTWGTLTF
 FKNRKCIGVAATRLQNRRFYPMVCSTAAKSSMKVIRSCASSTSLQYLCCYRLRQLRPNNGDTLEGLPLPP
 GLKQVLHNKLGWVLSMNCNHKSPVPPPGTATPGAESLETRPCQRKCRRS

TRTRPLEQKLISEEDLAANDILDYKDDDDKV

Restriction Sites: SgfI-MluI

Cloning Scheme:

Cloning sites used for ORF Shuttling:



* The last codon before the Stop codon of the ORF

ACCN: BC072556

ORF Size: 993 bp

OTI Disclaimer: The molecular sequence of this clone aligns with the gene accession number as a point of reference only. However, individual transcript sequences of the same gene can differ through naturally occurring variations (e.g. polymorphisms), each with its own valid existence. This clone is substantially in agreement with the reference, but a complete review of all prevailing variants is recommended prior to use. [More info](#)

OTI Annotation: This clone was engineered to express the complete ORF with an expression tag. Expression varies depending on the nature of the gene.

Components: The ORF clone is ion-exchange column purified and shipped in a 2D barcoded Matrix tube containing 10ug of transfection-ready, dried plasmid DNA (reconstitute with 100 ul of water).

Reconstitution Method:

1. Centrifuge at 5,000xg for 5min.
2. Carefully open the tube and add 100ul of sterile water to dissolve the DNA.
3. Close the tube and incubate for 10 minutes at room temperature.
4. Briefly vortex the tube and then do a quick spin (less than 5000xg) to concentrate the liquid at the bottom.
5. Store the suspended plasmid at -20°C. The DNA is stable for at least one year from date of shipping when stored at -20°C.

RefSeq: [BC072556.1](#)

RefSeq Size: 1933 bp

RefSeq ORF: 995 bp

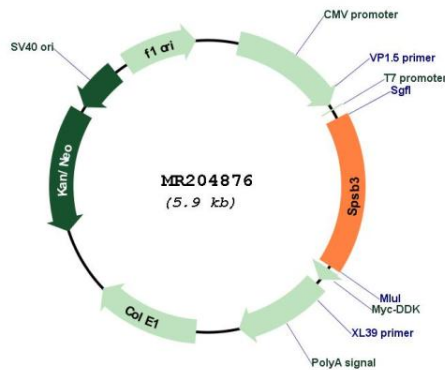
Locus ID: 79043

Cytogenetics: 17 A3.3

MW: 70.8 kDa

Gene Summary: May be a substrate recognition component of a SCF-like ECS (Elongin BC-CUL2/5-SOCS-box protein) E3 ubiquitin-protein ligase complex which mediates the ubiquitination and subsequent proteasomal degradation of target proteins.[UniProtKB/Swiss-Prot Function]

Product images:



Circular map for MR204876