

## Product datasheet for MR204853

### Extl2 (NM\_021388) Mouse Tagged ORF Clone

#### Product data:

Product Type:	Expression Plasmids
Product Name:	Extl2 (NM_021388) Mouse Tagged ORF Clone
Tag:	Myc-DDK
Symbol:	Extl2
Synonyms:	3000001D04Rik; AW146439
Mammalian Cell Selection:	Neomycin
Vector:	pCMV6-Entry (PS100001)
E. coli Selection:	Kanamycin (25 ug/mL)
ORF Nucleotide Sequence:	>MR204853 ORF sequence Red=Cloning site Blue=ORF Green=Tags(s)

TTTTGTAATACGACTCACTATAGGGCGGCCGGAATTCGTCGACTGGATCCGGTACCGAGGAGATCTGCC  
GCC**CGATCGCC**

ATGATGAGGGTTGCCACATCTGCAAACCTCCGGGAAGAGTCATGGGGATTCGAGTGCTCCGGTTCTCCC  
TGGTGGTCATCCTTGTGTGCTGCTGGTAGCGGGGCTTTGACCAACTTACTCCCAACATCAAAGAAGA  
CAAGATGCTCACTCTGCGTAGGGAGATCAAATCCCGAGCAAGTCGGCCCTGGATTCATTACCCTCATC  
ATGCAGACATAACAAGAACAGACCTCTACTAAGACTCTAAATCATTACCAGGCAGTACCGAGTCTGC  
ACAAGGTGATCGTGGTGTGGAACAATGTGGGAGAGAAGGGCCAGAGGAGTTGTGGAATTCCTAGGGCC  
TCACCCGATCCCTGTCTTCAAACCACAAACAGCAAACAAAATGAGAAACCGACTCCAGGTCTTCCCT  
GAAGTGGAGACCAACGCGGTGTTGATGGTAGACGATGACACACTCATTAGTGCCAGGACCTTGTTTTCG  
CTTTCTCAATTTGGCAGCAATTTCTGATCAGATCATAGGATTTGTACCTAGAAAGCACGTCTCTACTTC  
CTCCGGGATCTACAGTTACGGAGGCTTTGAGCTGCAGACACCGGGGCCGGGAATGGCGACCAGTACTCC  
ATGGTGCTCATCGGAGCCTCCTTCTTCAACAGCAAATACCTGGAACCTTCCAGAAGCAGCCTGCAGCCG  
TCCACGCGCTGATCGATGAGACGCAGAAGTGTGACGACATCGCTATGAATTTCTCGTACCAGGCACAC  
TGGCAAGCCTTCAGGGATATTCGTGAAACCCATAAACATGGTCAACTTGGAAAAAGAAACCAACGGGTAT  
TCCGGAATGTGGCACCGGGCGGAGCACTTTCTGCAGAGATCCTACTGTATAAATAAGCTCGTTAACATCT  
ACGACGGCATGCCCTAAAGTACTCCAACATTATGATTTCCAGTTTGGTTTTCCGTATGCCAACCAATAA  
AAGTAAATG

**ACGCGT**ACGCGGCCGCTCGAGCAGAACTCATCTCAGAAGAGGATCTGGCAGCAAATGATATCCTGGATT  
ACAAGGATGACGACGATAAGGTTTAA



[View online »](#)

**Protein Sequence:** >MR204853 protein sequence  
Red=Cloning site Green=Tags(s)

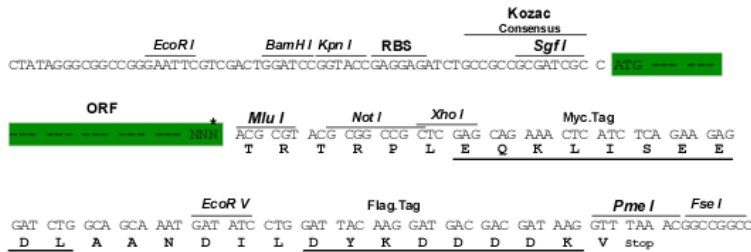
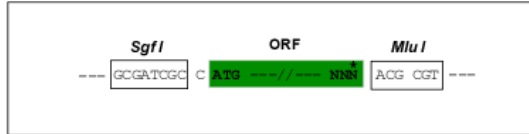
MMRGCHICKLPGRVMGIRVLRFSLVVILVLLL VAGALTNLLPNIKEDKMLTLRREIKSPSKSALDSFTLI  
 MQTYNRTDLLLRLLNHYQAVPSLHKVIVVWNNVGEKGPEELWNSLGPHIPVIFKPQTANKMRNRLQVFP  
 EVETNAVLMVDDDTLISAQDLVFAFSIWQQFPDQIIGFVPRKHVSTSSGIYSYGGFELQTPGPGNGDQYS  
 MVLIGASFFNSKYLELFQKQPAAVHALIDETQNCDDIAMNFLVTRHTGKPSGIFVKPINMVNLEKETNGY  
 SGMWHRAEHFLQRSYCINKLVNIYDGMPLKYSNIMISQFGFPYANHKS KM

TRTRPLEQKLISEEDLAANDILDYKDDDDKV

**Restriction Sites:** SgfI-MluI

**Cloning Scheme:**

Cloning sites used for ORF Shuttling:



\* The last codon before the Stop codon of the ORF

**ACCN:** NM\_021388

**ORF Size:** 993 bp

**OTI Disclaimer:** The molecular sequence of this clone aligns with the gene accession number as a point of reference only. However, individual transcript sequences of the same gene can differ through naturally occurring variations (e.g. polymorphisms), each with its own valid existence. This clone is substantially in agreement with the reference, but a complete review of all prevailing variants is recommended prior to use. [More info](#)

**OTI Annotation:** This clone was engineered to express the complete ORF with an expression tag. Expression varies depending on the nature of the gene.

**Components:** The ORF clone is ion-exchange column purified and shipped in a 2D barcoded Matrix tube containing 10ug of transfection-ready, dried plasmid DNA (reconstitute with 100 ul of water).

**Reconstitution Method:**

1. Centrifuge at 5,000xg for 5min.
2. Carefully open the tube and add 100ul of sterile water to dissolve the DNA.
3. Close the tube and incubate for 10 minutes at room temperature.
4. Briefly vortex the tube and then do a quick spin (less than 5000xg) to concentrate the liquid at the bottom.
5. Store the suspended plasmid at -20°C. The DNA is stable for at least one year from date of shipping when stored at -20°C.

**RefSeq:** [NM\\_021388.4](#), [NP\\_067363.3](#)

**RefSeq Size:** 3012 bp

**RefSeq ORF:** 993 bp

**Locus ID:** 58193

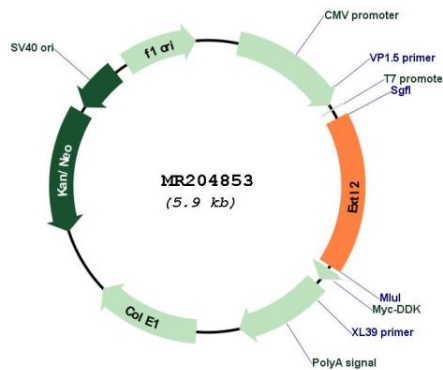
**UniProt ID:** [Q9ES89](#)

**Cytogenetics:** 3 G1

**MW:** 37.4 kDa

**Gene Summary:** Glycosyltransferase required for the biosynthesis of heparan-sulfate and responsible for the alternating addition of beta-1-4-linked glucuronic acid (GlcA) and alpha-1-4-linked N-acetylglucosamine (GlcNAc) units to nascent heparan sulfate chains.[UniProtKB/Swiss-Prot Function]

**Product images:**



Circular map for MR204853