

Product datasheet for **MR204840**

Ptgr1 (NM_025968) Mouse Tagged ORF Clone

Product data:

Product Type:	Expression Plasmids
Product Name:	Ptgr1 (NM_025968) Mouse Tagged ORF Clone
Tag:	Myc-DDK
Symbol:	Ptgr1
Synonyms:	2510002C21Rik; Ltb4dh; Zadh3
Mammalian Cell Selection:	Neomycin
Vector:	pCMV6-Entry (PS100001)
E. coli Selection:	Kanamycin (25 ug/mL)
ORF Nucleotide Sequence:	>MR204840 ORF sequence Red=Cloning site Blue=ORF Green=Tags(s)

TTTTGTAATACGACTCACTATAGGGCGGCCGGAATTCGTCGACTGGATCCGGTACCGAGGAGATCTGCC
GCC**CGATCGCC**

ATGGTGCAGGCCAAGAGCTGGACCCTGAAGAAGCACTTCGAAGGCTTCCCTACGGACGGTAACTTCGAGT
TGAAGACGACTGAGCTCCACCCTTAAATAATGGAGAGGTCTGCTGGAAGCCCTGTTCTCTCTGTGGA
TCCTTACATGAGAGTTGCAGCCAAAAACTGAAGGAGGGCGACAGGATGATGGGCGAGCAAGTGGCCAGA
GTCGTGAAAAGTAAAACTCAGCCTTCCAAAAGGAACGATTGTAGCGGCTTTATTAGGTTGGACATCAC
ATTCCATTTCTGATGGGAATGGACTGACAAAGCTGCCTGTAGAGTGGCCGACAAGTTGCCACTGTCTTT
GGCACTGGGGACAGTTGGCATGCCAGGCCTCACTGCCTACTTTGGCCTGCTTGACATCTGTGGCGTGAAG
GGTGGAGAAACCGTGATGGTCAGCGCAGCAGCAGGAGCAGTGGGCTCTGTTGTGGGCAGATAGCTAAGC
TCAAGGGCTGCAAAGTTGTTGGTACAGCAGGGTCTGATGAAAAGGTTGCCTATCTTAAGAAGCTTGATT
CGACGTGGCCTTAACTACAAGACAGTAAAGTCACTGGAGGAAGCTTTGAGGACAGCCTCTCCCGATGGT
TATGATTGCTATTTTGATAATGTAGGTGGAGAGTTTTCAAACGCTGTTATACTCCAGATGAAGACATTTG
GAAGGATTGCCATCTGTGGTGCCATCTCTCAATACAACCGTACTGGACCATGTCCCAGGGCCCCAGCCCC
AGAGGTGGTTATCTATCAGCAACTCCGCATGGAGGGTTTCATCGTGAATCGGTGGCAAGGAGAAGTCCGC
CAGAAGGCTCTGACAGAGTTGATGAATTGGGTCTCAGAGGGTAAAGTCCAGTATCATGAACACGTCAGT
AAGGATTTGAGAAAATGCCCGCAGCATTATGGGAATGTTGAAAGGAGAAAATCTGGGGAAGACCATAGT
GAAAGCA

ACGCGTACGCGGCCGCTCGAGCAGAAACTCATCTCAGAAGAGGATCTGGCAGCAAATGATATCCTGGATT
ACAAGGATGACGACGATAAGGTTTAA



[View online »](#)

Protein Sequence: >MR204840 protein sequence
Red=Cloning site Green=Tags(s)

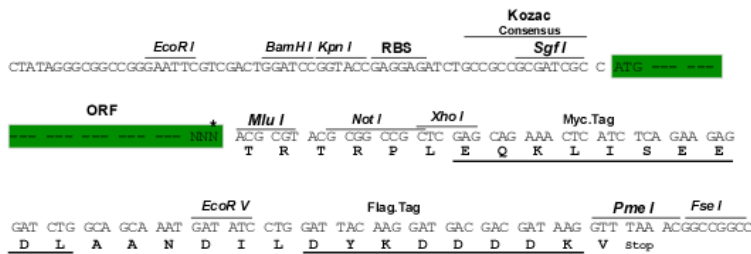
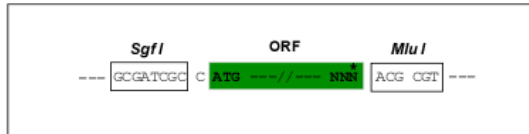
MVQAKSWTLKKHFEGFPTDGNFELKTTELPLNNGEVLLEALFLSVPYMRVAAKLLKEGDRMMGEQVAR
 VVESKNSAFPKGITIVAALLGWTSHSISDGNGLTKLPVEWPKLPLSLALGTVGMPGLTAYFGLLDICGVK
 GGETVMVSAAGAVGVSVVGQIAKLGCKVVGTAGSDEKVAYLKKLGFDFVAFNYKTVKSLEELRTASPDG
 YDCYFDNVGGEF SNAVILQMKTFGR I AICG A ISQYNRTGPCPQGP APEVVIYQQLRMEGFI VNRWQGEVR
 QKALTELMNVVSEKGVQYHEHVTEGFEKMPAAF MGLKGENLGKTI VKA

TRTRPLEQKLISEEDLAANDILDYKDDDDKV

Restriction Sites: SgfI-MluI

Cloning Scheme:

Cloning sites used for ORF Shuttling:



* The last codon before the Stop codon of the ORF

ACCN: NM_025968

ORF Size: 990 bp

OTI Disclaimer: The molecular sequence of this clone aligns with the gene accession number as a point of reference only. However, individual transcript sequences of the same gene can differ through naturally occurring variations (e.g. polymorphisms), each with its own valid existence. This clone is substantially in agreement with the reference, but a complete review of all prevailing variants is recommended prior to use. [More info](#)

OTI Annotation: This clone was engineered to express the complete ORF with an expression tag. Expression varies depending on the nature of the gene.

Components: The ORF clone is ion-exchange column purified and shipped in a 2D barcoded Matrix tube containing 10ug of transfection-ready, dried plasmid DNA (reconstitute with 100 ul of water).

Reconstitution Method:

1. Centrifuge at 5,000xg for 5min.
2. Carefully open the tube and add 100ul of sterile water to dissolve the DNA.
3. Close the tube and incubate for 10 minutes at room temperature.
4. Briefly vortex the tube and then do a quick spin (less than 5000xg) to concentrate the liquid at the bottom.
5. Store the suspended plasmid at -20°C. The DNA is stable for at least one year from date of shipping when stored at -20°C.

RefSeq: [NM_025968.1](#), [NM_025968.2](#), [NM_025968.3](#), [NP_080244.1](#)

RefSeq Size: 2104 bp

RefSeq ORF: 990 bp

Locus ID: 67103

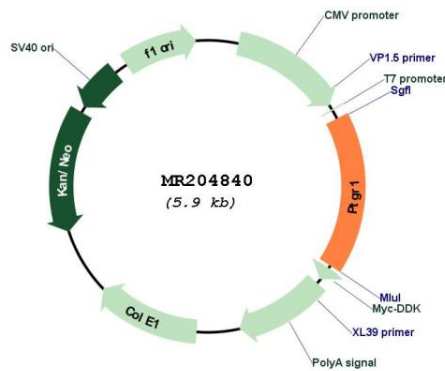
UniProt ID: [Q91YR9](#)

Cytogenetics: 4 B3

MW: 35.6 kDa

Gene Summary: Functions as 15-oxo-prostaglandin 13-reductase and acts on 15-oxo-PGE1, 15-oxo-PGE2 and 15-oxo-PGE2-alpha. Has no activity towards PGE1, PGE2 and PGE2-alpha. Catalyzes the conversion of leukotriene B4 into its biologically less active metabolite, 12-oxo-leukotriene B4. This is an initial and key step of metabolic inactivation of leukotriene B4 (By similarity). [UniProtKB/Swiss-Prot Function]

Product images:



Circular map for MR204840