

## Product datasheet for MR204832

### Scamp2 (NM\_022813) Mouse Tagged ORF Clone

#### Product data:

Product Type:	Expression Plasmids
Product Name:	Scamp2 (NM_022813) Mouse Tagged ORF Clone
Tag:	Myc-DDK
Symbol:	Scamp2
Synonyms:	A1875466; Sc2
Mammalian Cell Selection:	Neomycin
Vector:	pCMV6-Entry (PS100001)
E. coli Selection:	Kanamycin (25 ug/mL)
ORF Nucleotide Sequence:	>MR204832 ORF sequence Red=Cloning site Blue=ORF Green=Tags(s)

TTTTGTAATACGACTCACTATAGGGCGGCCGGAATTCGTCGACTGGATCCGGTACCGAGGAGATCTGCC  
GCC**CGATCGCC**

ATGTCGGCCTTCGACACTAACCCCTTCGCGGACCCAGTGGACGTAACCCCTTCAGGATCCCTCTGTGA  
CCCAGCTGACCAATGCTCCTCAGAGTGGCTGGCTGAGTTCAATCCCTTCTCAGAGACAAATGCAGCGAC  
AACAGTTCCTGCCACACAAGCTCCTGGGCCCTCCAGCCAGCAGTTCTCCAGCCCTCAGTGAACCAGCA  
CAGCCAACGCCCCAGGCTGTTGCAGCTGCGGCCAGGCAGGCTTGCTTCGACAGCAGGAAGAAGTAGACA  
GGAAAGCTGCCGAGCTGGAACGCAAGGAGCGAGAGTTGCAGAACACTGCAGCGAATTTGCATGTGCGAGA  
CAACAACCTGGCCGCCACTCCCCTCATGGTGCCTGTGAAACCCTGCTTCTATCAGGACTTCTCCACGGAG  
ATCCCTGCTGACTACCAGCGGATTTGCAAGATGCTTTACTATCTCTGGATGTTGCATTCACTGACTCTGT  
TTCTAAACCTGCTTGCCTGCCTGGCTGGTTTCAAGTGACGCAGCCAATGGAACAGCCTTTGGCCTCTC  
CATCCTTTGGTTTCTGATCTTCACTCCCTGTGCCTTCTTTTGGTACCGACCCATCTACAAGGCTTTC  
AGGTCTGACAACCTTTTCAGTCTTCTCGTGTCTTTTTTGTATTTTTTGTCAAATAGGGATCTACTTCA  
TCCAGTTGATTGGCTTGCCTAATTGGGGACCAGTGGTTGGCTTGACGCCCTATCTACGATGAAAAATGG  
GCCCTTAGCTGTGACCATCATGATGGTAGTGGCTGGCTTCTTTACCTCTGTGCTGGGCTTTCACTC  
TTCTCCTGCAGCGGGTACACGCCTTCTACCGCGAACAGGAGCCAGCTCCAGCAGGCCAGGAAGAGT  
TCTCCAGGGTATCTTCAGCAGCAGAACCTTTCGCGGGGCTGCCTCATCTGCTGCCGAGGAGCCTTTCA  
GGGAAT

**ACGCGT**ACGCGGCCGCTCGAGCAGAAACTCATCTCAGAAGAGGATCTGGCAGCAAATGATATCCTGGATT  
ACAAGGATGACGACGATAAGGTTTAA



[View online »](#)

**Protein Sequence:** >MR204832 protein sequence  
 Red=Cloning site Green=Tags(s)

MSAFDTNPFADPVDVNPFDPSVTQLTNA PQSGLAEFNPSETNAATTVPATQAPGPSQPAVLQPSVEPA  
 QPTPQAVAAAAQAGLLRQQEELDRKAAELERKERELQNTAANLHVRDNNWPPLPSWCPVKPCFYQDFSTE  
 IPADYQRICKMLYYLWMLHSVTLFLNLLACLAWFTSDAANGTAFGLSILWFLIFTPCAFLCWYRPIYKAF  
 RSDNSFSFFVFFVFFCQIGIYFIQLIGLPNLGTSGLAALSTMKNGLAVTIIIMMVVAGFFTL CAGLSL  
 FLLQRVHAFYRRTGASFQQAQEEFSQGI FSSRTFRGAASSAARGAFQGN

TRTRPLEQKLISEEDLAANDILDYKDDDDKV

**Restriction Sites:** SgfI-MluI

**Cloning Scheme:**

Cloning sites used for ORF Shuttling:



\* The last codon before the Stop codon of the ORF

**ACCN:** NM\_022813

**ORF Size:** 990 bp

**OTI Disclaimer:** The molecular sequence of this clone aligns with the gene accession number as a point of reference only. However, individual transcript sequences of the same gene can differ through naturally occurring variations (e.g. polymorphisms), each with its own valid existence. This clone is substantially in agreement with the reference, but a complete review of all prevailing variants is recommended prior to use. [More info](#)

**OTI Annotation:** This clone was engineered to express the complete ORF with an expression tag. Expression varies depending on the nature of the gene.

**Components:** The ORF clone is ion-exchange column purified and shipped in a 2D barcoded Matrix tube containing 10ug of transfection-ready, dried plasmid DNA (reconstitute with 100 ul of water).

**Reconstitution Method:**

1. Centrifuge at 5,000xg for 5min.
2. Carefully open the tube and add 100ul of sterile water to dissolve the DNA.
3. Close the tube and incubate for 10 minutes at room temperature.
4. Briefly vortex the tube and then do a quick spin (less than 5000xg) to concentrate the liquid at the bottom.
5. Store the suspended plasmid at -20°C. The DNA is stable for at least one year from date of shipping when stored at -20°C.

**RefSeq:** [NM\\_022813.3](#), [NP\\_073724.1](#)

**RefSeq Size:** 2370 bp

**RefSeq ORF:** 990 bp

**Locus ID:** 24044

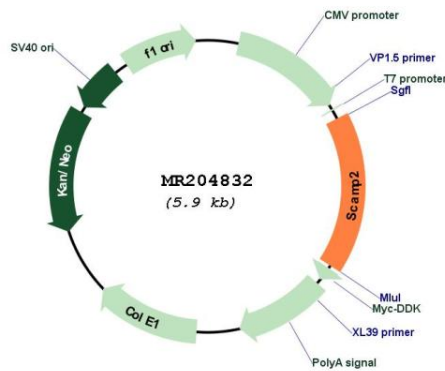
**UniProt ID:** [Q9ERN0](#)

**Cytogenetics:** 9 B

**MW:** 36.5 kDa

**Gene Summary:** Functions in post-Golgi recycling pathways. Acts as a recycling carrier to the cell surface (By similarity).[UniProtKB/Swiss-Prot Function]

**Product images:**



Circular map for MR204832