

Product datasheet for MR204827

Anp32b (BC093506) Mouse Tagged ORF Clone

Product data:

Product Type:	Expression Plasmids
Product Name:	Anp32b (BC093506) Mouse Tagged ORF Clone
Tag:	Myc-DDK
Symbol:	Anp32b
Synonyms:	PHAPI2a, PAL31, Ssp29
Mammalian Cell Selection:	Neomycin
Vector:	pCMV6-Entry (PS100001)
E. coli Selection:	Kanamycin (25 ug/mL)
ORF Nucleotide Sequence:	>MR204827 ORF sequence Red=Cloning site Blue=ORF Green=Tags(s)

TTTTGTAATACGACTCACTATAGGGCGGCCGGAATTCGTCGACTGGATCCGGTACCGAGGAGATCTGCC
GCC**CGATCGCC**

ATGGATATGAAGAGGAGGATCCACCTGGAGCTGAGGAACCGGACCCCGCAGCCGTTTCGAGAAGCTTGCT
TGGACAATTGCAAAGCAATGGATGGAAAAATTGAGGGTTAACAGATGAATTTGTGAAGCTTAGAGTTCT
CAGTTTAATAAGTGTAGGCTTGTTCAGTTTCAGACCTCCCGAAGCTACCTAAGTTGAAAAAGCTTGAG
CTCAGTAAAAATAGAATCTTCGGAGGTCTGGACAGACTAGCAGAAGAAGCTTCCAAGCCTCACACATCTGA
ACCTAAGTGGCAATAACCTGAAAGATATCAGCACCTTGGAGCCGTTGAAAAGTTGGATTGTCTGAAAAG
CCTGGATCTGTTGGCTGTGAGGTCACTAACCGGAGTGATTACCGAGAAAGTGTCTCAGGCTCCTGCC
CAGCTGTCTATCTGGATGGCTATGACCGAGAGGACCAGGAAGCACCTGACTCAGATGTGGAGGTGGATA
GTGTAGAGGAAGCCCGACTCAGATGGAGAGGTGGATGGTGTGGACAAAGAGGAAGAGGATGAAGAAGG
AGAGGATGAAGAGGAAGAGGAAGATGAGGATGGTGGAGGAAGAAGAAGATGAAGACGAAGAAGATGAGGAT
GAAGATGAGGATGTAGAAGGAGAAGATGATGAGGATGAAGTCAGCGGGGAGGTGAATACTGTTTTCT
TCCCTATCTGTGTAAGACAAAGGAAGAAGAATTTGGACATGATGGGGAAGTTGATGAAGATGAAGAAGA
TGAGGATGAAGATGAGGATGAAGAGGAGGAAGAAGTGGGAAGGTTGAAAAGAGAAGAGAGAAACAGAT
GACGAAGAAGAAGAGCCAAAGAATAGTTCCCGCAGATTCCGCTTCTCCGTTAGCCCTTGTTGTAATCC
ACCACCAAGCCTGGGACTTCGCCCAACAAAATTGTAACGTTGTTAGGTTTTCTGTGAAGACTCTTGC
TGATATCG

ACGCGTACGCGGCCGCTCGAGCAGAACTCATCTCAGAAGAGGATCTGGCAGCAATGATATCCTGGATT
ACAAGGATGACGACGATAAGGTTTAA



[View online »](#)

Protein Sequence: >MR204827 protein sequence
 Red=Cloning site Green=Tags(s)

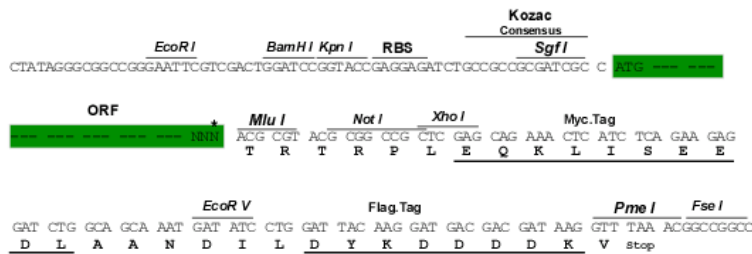
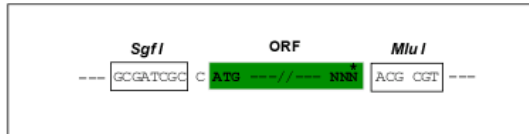
MDMKRRIHLELRNRTPAAVRELVLDNCKAMDGKIEGLTDEFVNLEFLSLISVGLFSVSDLPKLPKPKKLE
 LSENRIFGGLDRLAEELPSLTHLNLSGNNLKDISTLEPLKRLDCLKSLDLFGCEVTNRSDYRETVFRLLP
 QLSYLDGYDREDQEAPDSDEVDVSVVEEAPDSGDEVDGVDKEEEDDEEEDDEEEDDEEEDDEEED
 EDEDVEGEDDEDEVSSEVNTTVFFPICVKTKEEEFVGHGDEVEDEDEDEDEDEDEDEDEEESGKGEKRRKRETD
 DEEEEPKNSSRDIPSSVSPLVIHHQAWGLRPNKIVNVVRF SCKTLAVS

TRTRPLEQKLISEEDLAANDILDYKDDDDKV

Restriction Sites: SgfI-MluI

Cloning Scheme:

Cloning sites used for ORF Shuttling:



* The last codon before the Stop codon of the ORF

ACCN: BC093506

ORF Size: 987 bp

OTI Disclaimer: The molecular sequence of this clone aligns with the gene accession number as a point of reference only. However, individual transcript sequences of the same gene can differ through naturally occurring variations (e.g. polymorphisms), each with its own valid existence. This clone is substantially in agreement with the reference, but a complete review of all prevailing variants is recommended prior to use. [More info](#)

OTI Annotation: This clone was engineered to express the complete ORF with an expression tag. Expression varies depending on the nature of the gene.

Components: The ORF clone is ion-exchange column purified and shipped in a 2D barcoded Matrix tube containing 10ug of transfection-ready, dried plasmid DNA (reconstitute with 100 ul of water).

Reconstitution Method:

1. Centrifuge at 5,000xg for 5min.
2. Carefully open the tube and add 100ul of sterile water to dissolve the DNA.
3. Close the tube and incubate for 10 minutes at room temperature.
4. Briefly vortex the tube and then do a quick spin (less than 5000xg) to concentrate the liquid at the bottom.
5. Store the suspended plasmid at -20°C. The DNA is stable for at least one year from date of shipping when stored at -20°C.

RefSeq: [BC093506](#), [AAH93506](#)

RefSeq Size: 1297 bp

RefSeq ORF: 989 bp

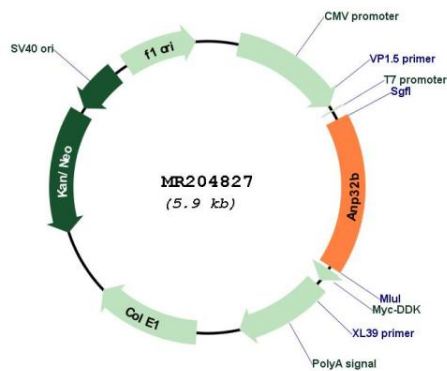
Locus ID: 67628

Cytogenetics: 4 B1

MW: 37.4 kDa

Gene Summary: Multifunctional protein working as a cell cycle progression factor as well as a cell survival factor. Required for the progression from the G1 to the S phase. Anti-apoptotic protein which functions as a caspase-3 inhibitor. Has no phosphatase 2A (PP2A) inhibitor activity. Exhibits histone chaperone properties, stimulating core histones to assemble into a nucleosome (By similarity).[UniProtKB/Swiss-Prot Function]

Product images:



Circular map for MR204827