

Product datasheet for **MR204816**

P2ry6 (NM_183168) Mouse Tagged ORF Clone

Product data:

| | |
|---------------------------|---|
| Product Type: | Expression Plasmids |
| Product Name: | P2ry6 (NM_183168) Mouse Tagged ORF Clone |
| Tag: | Myc-DDK |
| Symbol: | P2ry6 |
| Synonyms: | 2010204J23Rik; P2Y6 |
| Mammalian Cell Selection: | Neomycin |
| Vector: | pCMV6-Entry (PS100001) |
| E. coli Selection: | Kanamycin (25 ug/mL) |
| ORF Nucleotide Sequence: | >MR204816 ORF sequence Red=Cloning site Blue=ORF Green=Tags(s) |

TTTTGTAATACGACTCACTATAGGGCGGCCGGAATTCGTCGACTGGATCCGGTACCGAGGAGATCTGCC
GCC**CGATCGCC**

ATGGAGCAGGACAATGGCACCATCCAGGCTCCAGGCTTGCCGCCACCACCTGCGTCTACCGTGAGGATT
TCAAGCGACTGCTGCTAACCCCGGTATACTCGGTGGTGTGGTGGTGGCCTGCCACTGAACATCTGCGT
CATTGCCAGATCTGCGCATCCCGCCGACCCTGACCCGTTCCGCTGTGTACACCCTGAACCTGGCACTG
GCGGACCTGATGTATGCCTGTTCACTACCCTACTTATCTATAACTACGCCAGAGGGGACCCTGGCCCT
TCGGAGACCTCGCCTGCCGCTTTGTACGCTTCTCTTCTATGCCAATCTACATGGCAGCATCCTGTTCTCT
CACCTGCATTAGCTTCCAGCGCTACCTGGGCATCTGCCACCCCTGGCTTCTGGCACAAGCGTGGAGGT
CGCCGTGCTGCTTGGGTAGTGTGTGGAGTCGTGTGGCTGGCTGTGACAGCCAGTGCCTGCCACCGCAG
TCTTTGCTGCCACAGGCATCCAGCGCAACCGCACTGTGTGCTACGACCTGAGCCACCCATCCTGTCTAC
TCGCTACCTGCCCTATGGTATGGCCCTCACGGTCATCGGCTTCTTGTGTCCTTCATAGCCTTACTGGCT
TGTTATTGTGCGATGGCCCGCCGCTGTGTGCCAGGATGGCCAGCAGGTCCTGTGGCCCAAGAGCGGC
GCAGCAAGGCGGCTCGTATGGCTGTGGTGGTGGCAGCTGTCTTTGCCATCAGTTCCTGCCTTCCACAT
CACCAAGACAGCCTACTTGGCTGTGCGCTCCACGCCCGGTGTCTTTGCCCTGTGCTGGAGACCTTCGT
GCTGCCTACAAAGGCACTCGGCCCTTCGCCAGTGTCAACAGTGTCTGGACCCCAATCTCTTCTACTTCA
CACAACAGAAGTCCGGCGGCAACCCACGATCTCTTACAGAGGCTCACAGCCAAGTGGCAGAGGCAGAG
AGTC

ACGCGTACGCGGCCGCTCGAGCAGAACTCATCTCAGAAGAGGATCTGGCAGCAATGATATCCTGGATT
ACAAGGATGACGACGATAAGGTTTAA



[View online »](#)

Protein Sequence: >MR204816 protein sequence
Red=Cloning site Green=Tags(s)

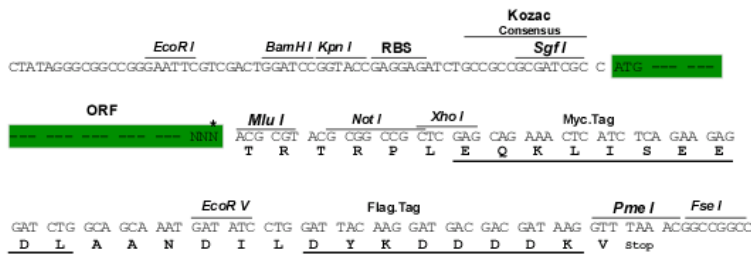
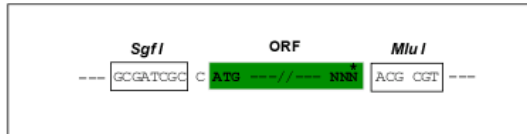
MEQDNGTIQAPGLPPTTCVYREDFKRLLLTPVYSVVLVVGPLNICVIAQICASRRTLRSVAVYTLNLAL
 ADLAMYACSLPLLIYNYARGDHWPFGLACRFVRFIFYANLHGSILFLTCISFQRYLGICHPLASWHKRGG
 RRAAWVCGVVWLAVTAQCLPTAVFAATGIQRNRTVCYDLSPILSTRYLPYGMALTVIGFLLPFIALLA
 CYCRMARRLCRQDGPAGPVAQERRSKAARMVVAAVFAISFLPFHITKTAYLAVRSTPGVSCPVLETFA
 AAYKGRPFASVNSVLDPIILFYFTQQKFRRQPHDLLQRLTAKWQRQRV

TRTRPLEQKLISEEDLAANDILDYKDDDDKV

Restriction Sites: SgfI-MluI

Cloning Scheme:

Cloning sites used for ORF Shuttling:



* The last codon before the Stop codon of the ORF

ACCN: NM_183168

ORF Size: 987 bp

OTI Disclaimer: The molecular sequence of this clone aligns with the gene accession number as a point of reference only. However, individual transcript sequences of the same gene can differ through naturally occurring variations (e.g. polymorphisms), each with its own valid existence. This clone is substantially in agreement with the reference, but a complete review of all prevailing variants is recommended prior to use. [More info](#)

OTI Annotation: This clone was engineered to express the complete ORF with an expression tag. Expression varies depending on the nature of the gene.

Components: The ORF clone is ion-exchange column purified and shipped in a 2D barcoded Matrix tube containing 10ug of transfection-ready, dried plasmid DNA (reconstitute with 100 ul of water).

Reconstitution Method:

1. Centrifuge at 5,000xg for 5min.
2. Carefully open the tube and add 100ul of sterile water to dissolve the DNA.
3. Close the tube and incubate for 10 minutes at room temperature.
4. Briefly vortex the tube and then do a quick spin (less than 5000xg) to concentrate the liquid at the bottom.
5. Store the suspended plasmid at -20°C. The DNA is stable for at least one year from date of shipping when stored at -20°C.

RefSeq: [NM_183168.2](#)

RefSeq Size: 1917 bp

RefSeq ORF: 987 bp

Locus ID: 233571

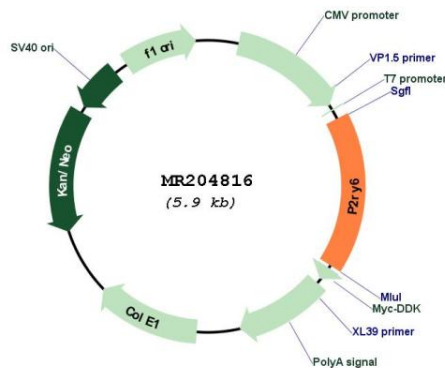
UniProt ID: [Q9ERK9](#)

Cytogenetics: 7 E2

MW: 36.7 kDa

Gene Summary: Receptor for extracellular UTP > ADP = 2-methylthio-ATP > ADP-beta-S > ATP = ATP-gamma-S. The activity of this receptor is mediated by G proteins which activate a phosphatidylinositol-calcium second messenger system. Functionally coupled to phospholipase C (By similarity). [UniProtKB/Swiss-Prot Function]

Product images:



Circular map for MR204816