

Product datasheet for MR204776

Mpped1 (NM_172610) Mouse Tagged ORF Clone

Product data:

Product Type: Expression Plasmids
Product Name: Mpped1 (NM_172610) Mouse Tagged ORF Clone
Tag: Myc-DDK
Symbol: Mpped1
Synonyms: 6230403M19; AW456965; D15Bwg0669e
Mammalian Cell Selection: Neomycin
Vector: pCMV6-Entry (PS100001)
E. coli Selection: Kanamycin (25 ug/mL)
ORF Nucleotide Sequence: >MR204776 ORF sequence
 Red=Cloning site Blue=ORF Green=Tags(s)

TTTTGTAATACGACTCACTATAGGGCGCCGGGAATTCGTCGACTGGATCCGGTACCGAGGAGATCTGCC
 GCC**CGGATCGCC**

ATGTGGCGCCCTAGGTGGGATCCTGGCATCCTGAAGGCTGAAGCCCTGGCCCTGCTCCCCTGTGGCCTGG
 GCATGGCGTTCTCTCAGTCTCACGTGATGGCCTCTCGACGGCACCAACATGGCCGACTCATCATCGAGGT
 GGACGAATACAGCTCCAATCCCACCCAGGCCTCACCTTCTACAATATCAACCAGGGCCGCTTCCAGCCA
 CCTCACGTGCAGATGGTGGACCCAGTGCCTCACGATGCCCAAAGCCACCTGGTACACACGTTTTGTCT
 GTGTTTCTGACACTCACTCAAGGACAGATCCCATTCAAATGCCCTACGGCGATGTGCTGATCCACGCTGG
 GGACTTACGGAACTGGGGCTCCCAAGCGAGGTGAAGAAGTTCATGAATGGCTGGGCGAGCCTGCCCTAT
 GAGTACAAGATCGTGATTGCGGGCAACCACGAGCTGACCTTCGACCAGGAGTTATGGCCGACCTCATCA
 AGCAGGACTTTTATTATTTCCCGTCCGTGTCCAAGCTGAAGCCGGAGAATATGAGAACGTGCAGTCTCT
 GCTGACCAACTGCATCTACCTGCAGGACTCAGAGGTCACGGTGCCTGGCTTCCGGATCTACGGCTCCCCG
 TGGCAGCCCTGGTTCTATGGCTGGGATTCAACCTCCCAGAGGCCAAGCGCTCCTGGAGAAGTGGAAATC
 TCATCCCAGAAGGAGTAGACATCCTTAATACTCATGGACCACCACTGGGCTTTCTAGACTGGGTCCCCAA
 GAAGATGCAGCGTGTGGGCTGTGTGGAGCTGCTCAACACAGTCCAGAGGGGGTCCAGCCACGGCTGCAC
 GTCTTTGGCCACATCCATGAAGGATGGCGTCATGGCAGACGGGACCACCACCTATGTGAACGCGTCGG
 TGTGCACTGTGAATATCAGCCTGTGAATCCCCCATAGTCATCGACCTGCCACACCCCGGAATCC

AG**CGGACCG**ACGCGTACGCGCCGCTCGAGCAGAACTCATCTCAGAAGAGGATCTGGCAGCAAATGATATCC
 TGGATTACAAGGATGACGACGATAAGGTTTAA



[View online »](#)

Protein Sequence: >MR204776 protein sequence
 Red=Cloning site Green=Tags(s)

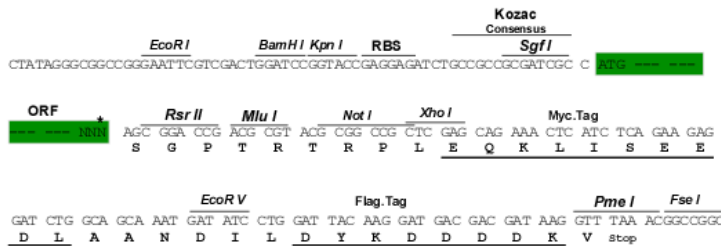
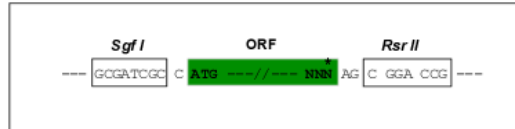
MWRPRWDPGILKAEALALLPCGLGMAFSQSHVMASRRHQHGRLIEVDEYSSNPTQAFTFYININQGRFQP
 PHVQMVDVPVPHDAPKPPGYTRFVCVSDTHSRTDPIQMPYGDVLIHAGDFTEGLPSEVKKFNEWLGSLPY
 EYKIVIAGNHELTFDQEFMADLIKQDFYYFSPVSKLKPENYENVQSLLNCIYLQDSEVTVRGFRIYGSP
 WQPFWYWGWFNLPRGQALLEKWNLIPEGVDILITHGPPLGLDWVPPKMQRVGCVELLNTVQRRVQPRLH
 VFGHIHEGYVMADGTTTYVNASVCTVNYQPVNPPIVIDLPTRNS

SGPTRTRPLEQKLISEEDLAANDILDYKDDDDKV

Restriction Sites: SgfI-RsrII

Cloning Scheme:

Cloning sites used for ORF Shuttling:



* The last codon before the Stop codon of the ORF

ACCN: NM_172610

ORF Size: 981 bp

OTI Disclaimer: The molecular sequence of this clone aligns with the gene accession number as a point of reference only. However, individual transcript sequences of the same gene can differ through naturally occurring variations (e.g. polymorphisms), each with its own valid existence. This clone is substantially in agreement with the reference, but a complete review of all prevailing variants is recommended prior to use. [More info](#)

OTI Annotation: This clone was engineered to express the complete ORF with an expression tag. Expression varies depending on the nature of the gene.

Components: The ORF clone is ion-exchange column purified and shipped in a 2D barcoded Matrix tube containing 10ug of transfection-ready, dried plasmid DNA (reconstitute with 100 ul of water).

Reconstitution Method:

1. Centrifuge at 5,000xg for 5min.
2. Carefully open the tube and add 100ul of sterile water to dissolve the DNA.
3. Close the tube and incubate for 10 minutes at room temperature.
4. Briefly vortex the tube and then do a quick spin (less than 5000xg) to concentrate the liquid at the bottom.
5. Store the suspended plasmid at -20°C. The DNA is stable for at least one year from date of shipping when stored at -20°C.

RefSeq: [NM_172610.3](#)

RefSeq Size: 3255 bp

RefSeq ORF: 981 bp

Locus ID: 223726

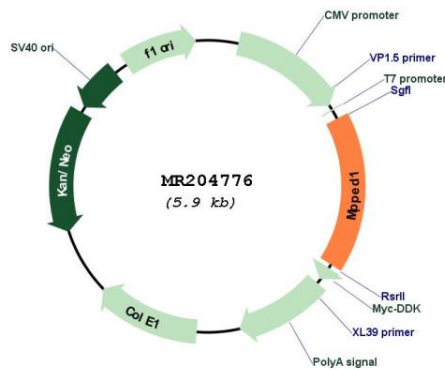
UniProt ID: [Q91ZG2](#)

Cytogenetics: 15 39.44 cM

MW: 37.2 kDa

Gene Summary: May have metallophosphoesterase activity (in vitro).[UniProtKB/Swiss-Prot Function]

Product images:



Circular map for MR204776