

## Product datasheet for MR204768

### Rassf2 (NM\_175445) Mouse Tagged ORF Clone

#### Product data:

|                           |   |
|---------------------------|---|
| Product Type:             | Expression Plasmids   |
| Product Name:             | Rassf2 (NM_175445) Mouse Tagged ORF Clone                         |
| Tag:                      | Myc-DDK   |
| Symbol:                   | Rassf2  |
| Synonyms:                 | 3830431H01Rik; 9030412M04Rik; AI852669; AW495050                  |
| Mammalian Cell Selection: | Neomycin  |
| Vector:                   | pCMV6-Entry (PS100001)  |
| E. coli Selection:        | Kanamycin (25 ug/mL)  |
| ORF Nucleotide Sequence:  | >MR204768 ORF sequence<br>Red=Cloning site Blue=ORF Green=Tags(s) |

TTTTGTAATACGACTCACTATAGGGCGGCCGGAATTCGTCGACTGGATCCGGTACCGAGGAGATCTGCC  
GCC**CGATCGCC**

ATGGACTACACTACCAACCTGCCCTAATCCCATGCGGACAAGACAAGTATATGCCCAAGAGTGAACCTC  
TCCTACATCTGAAGACCTACAACCTGTACTATGAAGGTCAAACCTGCAACTCCGACACCGAGAGGAGGA  
AGACGAGTTCATTGTGGAGGGTACTGAACATCTCTGGGGCTGCGCAGGCCATTTCGGCTGCAGATG  
CAGGATGACCACGAACGCATCCGTCCTCCTCCATCCTCCTCCTCCTGGCACTCCGGCTGTAACCTGGCG  
CACAGGGCACCACACTGAAGCCCTCACCATGCCACTGTTCCAGATCTCAGAAGTGGATATGCCAGTTGA  
AGGCCTCGAGACACAGCCCAACAGATTCCAGAGGCCTGAAGCCTGTGCAGGAGGACACCCACAGTTG  
ATGCGCACACGCAGCGATGTTGGGTGCGTCGCGTGGCAACGTGAGGACATCCAGTGACCAGCGACGGA  
TCAGACGCCATCGCTTCTCCATCAATGGCCATTCTATAACCACAAGACATCAGTGTTCCACACGACCTA  
TGGCTCTGTACCAACGTCCGCATCAACAGCACCATGACCACTCCGCAGGTCCTGAAGTTGCTGCTCAAC  
AAGTTAAGATTGAGAACTCGGCAGAGGAGTTTGGCGTGTACGTGGTCCACACCAGCGGTGAAAAGCAGA  
GGCTGAAGAGCTCCGACTACCCTCTGATCGCCGCATCCTCCAGGGCCCTTGTGAACAGATCTCCAAAGT  
TTTCTGATGGAGAAGGACCAGGTGGAGGAGTACCTATGACGTGGCCAGTATATAAAGTTTCGAGATG  
CCAGTCTTAAAAGCTTCATTAGAAACTCCAGGAGGAGGAAGACCGGGAGGTGGAGAAGCTGATGCGCA  
AGTACACTGTGCTCCGGTAATGATTCGGCAAAGGCTCGAGGAGATAGCAGAGACCCCGAGACTATC

**ACGCGT**ACGCGGCCGCTCGAGCAGAAACTCATCTCAGAAGAGGATCTGGCAGCAATGATATCCTGGATT  
ACAAGGATGACGACGATAAGGTTTAA



[View online »](#)

**Protein Sequence:** >MR204768 protein sequence  
Red=Cloning site Green=Tags(s)

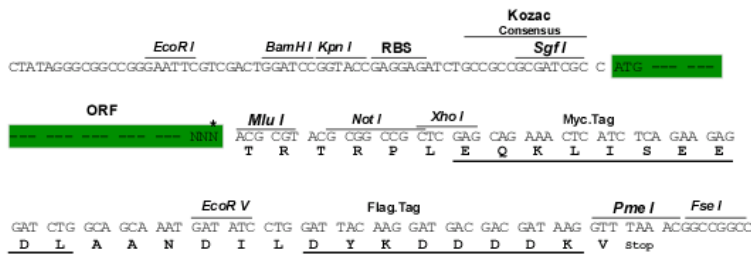
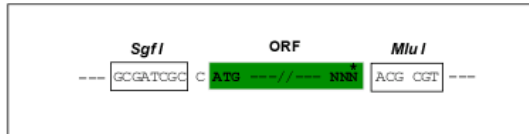
MDYTHQPALIPCGQDKYMPKSELLLHLKTYNLYEQNLQLRHREEEDEFIVEGLLNI SWGLRRP IRLQM  
 QDDHERIRPPSSSSWHSGCNLGAQGTTLKPLTMPTVQISEVDM PVEGLETHSPTDSRGLKPVQEDTPQL  
 MRTRSDVGVRRRGNVRTSSDQRRIRRRHRSINGHFYNHKT SVFTPAYGSVTNVRINSTMTTPQVLKLLLN  
 KFKIENSAEEFALYVVHTSGEKQRLKSSDYPLIARILQGPCEQISKVFLMEKDQVEEVTYDVAQYIKFEM  
 PVLKSF IQKLQEEEDREVEKLMRKYTVLRLMIRQRLEEIAETPETI

TRTRPLEQKLISEEDLAANDILDYKDDDDKV

**Restriction Sites:** SgfI-MluI

**Cloning Scheme:**

Cloning sites used for ORF Shuttling:



\* The last codon before the Stop codon of the ORF

**ACCN:** NM\_175445

**ORF Size:** 981 bp

**OTI Disclaimer:** The molecular sequence of this clone aligns with the gene accession number as a point of reference only. However, individual transcript sequences of the same gene can differ through naturally occurring variations (e.g. polymorphisms), each with its own valid existence. This clone is substantially in agreement with the reference, but a complete review of all prevailing variants is recommended prior to use. [More info](#)

**OTI Annotation:** This clone was engineered to express the complete ORF with an expression tag. Expression varies depending on the nature of the gene.

**Components:** The ORF clone is ion-exchange column purified and shipped in a 2D barcoded Matrix tube containing 10ug of transfection-ready, dried plasmid DNA (reconstitute with 100 ul of water).

**Reconstitution Method:**

1. Centrifuge at 5,000xg for 5min.
2. Carefully open the tube and add 100ul of sterile water to dissolve the DNA.
3. Close the tube and incubate for 10 minutes at room temperature.
4. Briefly vortex the tube and then do a quick spin (less than 5000xg) to concentrate the liquid at the bottom.
5. Store the suspended plasmid at -20°C. The DNA is stable for at least one year from date of shipping when stored at -20°C.

**RefSeq:** [NM\\_175445.4](#)

**RefSeq Size:** 4825 bp

**RefSeq ORF:** 981 bp

**Locus ID:** 215653

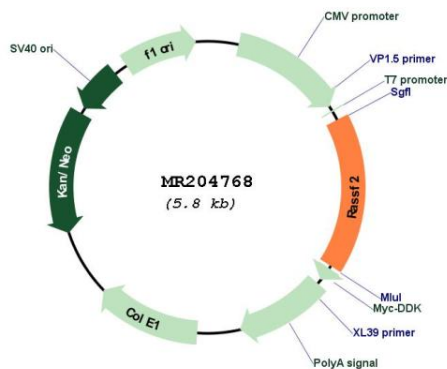
**UniProt ID:** [Q8BMS9](#)

**Cytogenetics:** 2 F2

**MW:** 38 kDa

**Gene Summary:** Potential tumor suppressor. Acts as a KRAS-specific effector protein. May promote apoptosis and cell cycle arrest. Stabilizes STK3/MST2 by protecting it from proteasomal degradation (By similarity).[UniProtKB/Swiss-Prot Function]

### Product images:



Circular map for MR204768