

Product datasheet for MR204747

Prss52 (NM_028525) Mouse Tagged ORF Clone

Product data:

Product Type:	Expression Plasmids
Product Name:	Prss52 (NM_028525) Mouse Tagged ORF Clone
Tag:	Myc-DDK
Symbol:	Prss52
Synonyms:	1700049K14Rik; Tesp3
Mammalian Cell Selection:	Neomycin
Vector:	pCMV6-Entry (PS100001)
E. coli Selection:	Kanamycin (25 ug/mL)
ORF Nucleotide Sequence:	>MR204747 representing NM_028525 Red=Cloning site Blue=ORF Green=Tags(s)

TTTTGTAATACGACTCACTATAGGGCGGCCGGAATTCGTCGACTGGATCCGGTACCGAGGAGATCTGCC
GCC**CGCATCGCC**

ATGAAACGATGGAAGGACAGAAGAACAGGCCTGTTGCTGCCATTGGTCCTCCTGTTGTTGGGCATGTA
GCTCACTGGCATGGGTATGTGGCCGCGAATGAGTAGCAGATCCCAACAACCTAACAATGCTTCTGCTAT
CGTGGAAGGCAAACCTGCTTCTGCTATCGTGGGAGGCAAACCTGCAAACATCTTGGAGTTCCTGGCAT
GTGGGGATTATGAATCATGGTAGTCATCTCTGTGGGGATCTATTCTCAATGAGTGGTGGTTCTATCTG
CATCCCATGCTTCGACCAACTAAACAACCTCTAAATTGGAGATCATTGATGGCACTGAAGACCTCAGCAC
AAAGGGCATAAAGTATCAGAAAGTGGACAAGTTATTCTTGACCCAAAGTTTGATGACTGGCTCCTGGAC
AACGACATAGCTTTGCTCTTGTCAAATCCCCATTAACCTTGAGTGTCAACAGGATACCTATCTGCACTT
CAGAAATCTCTGACATACAGGCATGGAGGAACTGCTGGGTGACAGGATGGGGCATTACTAATACTAGTGA
AAAAGGAGTCCAACCCACAATTCTGCAGGCAGTCAAAGTGGATCTGTACAGATGGGATGGTGTGGCTAT
ATTTTGTCTCTATTAACCAAGAATATGCTGTGTGCTGGGACTCAAGATCCTGGGAAGGATGCCTGCCAGG
GCGACAGTGGAGGAGCTCTCGTTTGCAACAAAAGAGAAAACACAGCCATTTGGTACCAGGTGGGCATTGT
CAGCTGGGGCATGGGCTGTGGCAAGAAGAATCTGCCAGGAGTATACCCAAGGTGTCACACTATGTGAGG
TGGATCAGCAAGCAGACAGCGAAGGCGGGGAGGCCTTATATGTATGAGCAGAACCTGCGTGCCTTTGG
TGCTCTTTGCCGGCTATCTTGTCTCTATATTTGTAATGTTTCTTCTAACC

ACGCGTACGCGGCCGCTCGAGCAGAAACTCATCTCAGAAGAGGATCTGGCAGCAATGATATCCTGGATT
ACAAGGATGACGACGATAAGGTTTAA



[View online »](#)

Protein Sequence: >MR204747 representing NM_028525
 Red=Cloning site Green=Tags(s)

MKRWKDRRTGLLLPLVLLLFACSSLAWVCGRRMSSRSQQLNNSAIVEGKPASAIVGGKPANILEFPWH
 VGIMNHGSHLCCGSILNEWVLSASHCFDQLNNSKLEIIHGTEDELSTKGIKYQKVDKFLHPKFDDWLLD
 NDIALLLLKSPNLNLSVNRIPICTSEISDIQAWRNCVWTGWGITNTSEKGVQPTILQAVKVDLYRWDWCGY
 ILSLLTKNMLCAGTQDPGKDACQGDSSGALVCNKKRNTAIWYQVGI VSWGMGCGKKNLPGVYTKVSHYVR
 WISKQTAKAGRPYMYEQNSACPLVLSRAILFLYFVMFLLT

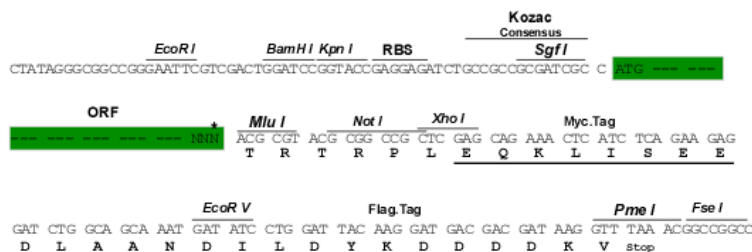
TRTRPLEQKLISEEDLAANDILDYKDDDDKV

Chromatograms: https://cdn.origene.com/chromatograms/mm9061_c09.zip

Restriction Sites: SgfI-MluI

Cloning Scheme:

Cloning sites used for ORF Shuttling:



* The last codon before the Stop codon of the ORF

ACCN: NM_028525

ORF Size: 963 bp

OTI Disclaimer: The molecular sequence of this clone aligns with the gene accession number as a point of reference only. However, individual transcript sequences of the same gene can differ through naturally occurring variations (e.g. polymorphisms), each with its own valid existence. This clone is substantially in agreement with the reference, but a complete review of all prevailing variants is recommended prior to use. [More info](#)

OTI Annotation: This clone was engineered to express the complete ORF with an expression tag. Expression varies depending on the nature of the gene.

Components: The ORF clone is ion-exchange column purified and shipped in a 2D barcoded Matrix tube containing 10ug of transfection-ready, dried plasmid DNA (reconstitute with 100 ul of water).

Reconstitution Method:

1. Centrifuge at 5,000xg for 5min.
2. Carefully open the tube and add 100ul of sterile water to dissolve the DNA.
3. Close the tube and incubate for 10 minutes at room temperature.
4. Briefly vortex the tube and then do a quick spin (less than 5000xg) to concentrate the liquid at the bottom.
5. Store the suspended plasmid at -20°C. The DNA is stable for at least one year from date of shipping when stored at -20°C.

RefSeq: [NM_028525.2](#), [NP_082801.2](#)

RefSeq Size: 1054 bp

RefSeq ORF: 966 bp

Locus ID: 73382

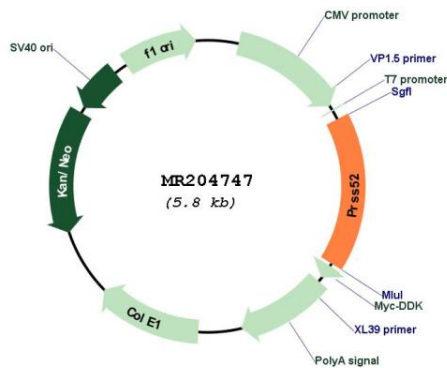
UniProt ID: [Q9D9M0](#)

Cytogenetics: 14 D1

MW: 35.9 kDa

Gene Summary: Probable serine protease.[UniProtKB/Swiss-Prot Function]

Product images:



Circular map for MR204747