

Product datasheet for MR204679

Kynu (BC026950) Mouse Tagged ORF Clone

Product data:

Product Type:	Expression Plasmids
Product Name:	Kynu (BC026950) Mouse Tagged ORF Clone
Tag:	Myc-DDK
Symbol:	Kynu
Synonyms:	4432411A05Rik
Mammalian Cell Selection:	Neomycin
Vector:	pCMV6-Entry (PS100001)
E. coli Selection:	Kanamycin (25 ug/mL)
ORF Nucleotide Sequence:	>MR204679 ORF sequence Red=Cloning site Blue=ORF Green=Tags(s)

TTTTGTAATACGACTCACTATAGGGCGGCCGGAATTCGTCGACTGGATCCGGTACCGAGGAGATCTGCC
GCC**CGATCGCC**

ATGGAGCCTTCGCCTCTTGAGCTTCCAGTTGATGCAGTGCGGCGCATCGCGGCTGAACTCAATTGTGACC
CAACAGATGAGAGGGTTGCTCTCCGCTTGGATGAGGAAGATAAACTGAGTCATTTAGGAACTGTTTTTA
TATTCCTCCAAAATGCGGGACCTGCCTTCAATTGATCTATCTTTAGTGAGTGAGGATGATGATGCCATCTAT
TTCCTGGGAAATTCCTTGGCCTCAACCGAAAATGGTTAGGACATACCTGGAGGAAGAACTAGATAAGT
GGCCAAGATGGGAGCCTATGGCCATGATGTAGGCAAACGCCCTTGGATTGTAGGGGATGAGAGTATTGT
AAGCCTTATGAAGGACATTGTAGGAGCCCATGAGAAAGAAATAGCTCTAATGAATGCTTTGACTATTAAT
TTACATCTCCTGCTGTTATCATTCTTTAAGCCTACTCCAAGCGGCACAAAATTCTTCTAGAAGCCAAAAG
CCTTCCCTTCTGATCATTATGCTATTGAGTCACAGATTCAACTTCACGGACTTGTGTTGAGAAAAGTAT
GCGGATGGTAAAGCCACGAGAGGGGGAAGAGACCTTAAGGATGGAGGACATACTGGAAGTAAATCGAGGAG
GAAGGAGACTCGATCGCCGTGATCCTGTTCAAGTGGGCTGCACTTTTATACTGGACAGCTGTTCAACATTC
CTGCCATAACAAAAGCTGGACATGCAAAGGGCTGTTTTGTTGGCTTTGACCTAGCACATGCAGTTGGAAA
TGTTGAACTCCGCTTACATGACTGGGGTGTGACTTTGCCTGCTGGTGTCTCTATAAGTATTTAAATTC
GGAGCTGGAGGTCTGGCTGGTGCCTTTGTCCACGAGAAACATGCTCATACTGTCAAGCCTGCGATGGAGC
ACCTGCAGTGTGATATCAAGCTGAAAGGCAACCTGTTTGCATATGGACAGAGGAGAAAAG

ACGCGTACGCGGCCGCTCGAGCAGAAACTCATCTCAGAAGAGGATCTGGCAGCAAATGATATCCTGGATT
ACAAGGATGACGACGATAAGGTTTAA



[View online »](#)

Protein Sequence: >MR204679 protein sequence
Red=Cloning site Green=Tags(s)

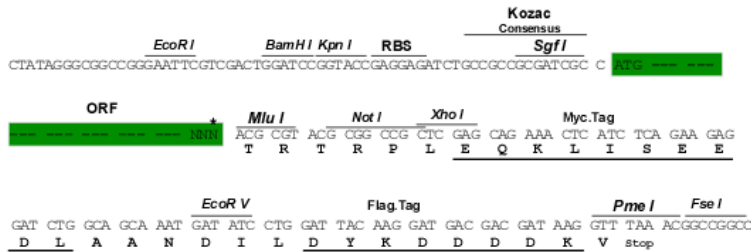
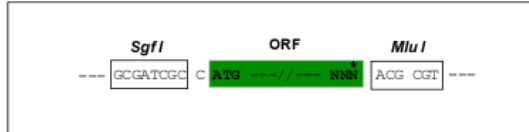
MEPSPLELPVDAVRRIAAELNCDPTDERVALRLDEEDKLSHFRNCFYIPKMRDLPSIDLVLVSEDDDAIY
 FLGNSLGLQPKMVRTYLEEELDKWAKMGAYGHDVGKRPWIVGDESIVSLMKDIVGAHEKEIALMNALTIN
 LHLLLLSFFKPTPKRHKILLEAKAFPSDHYAIESQIQLHGLDVEKSMRMVKPREGEETLRMEDILEVIEE
 EGDSIAVILFSGLHFYTGQLFNIPAITKAGHAKGCFVGFDLAHAVGNVELRLHDWGVDFACWCSYKYLNS
 GAGGLAGAFVHEKHAHTVKPAMDDLQCDIKLKGNLFAYGQRRK

TRTRPLEQKLISEEDLAANDILDYKDDDDKV

Restriction Sites: SgfI-MluI

Cloning Scheme:

Cloning sites used for ORF Shuttling:



* The last codon before the Stop codon of the ORF

ACCN: BC026950

ORF Size: 969 bp

OTI Disclaimer: The molecular sequence of this clone aligns with the gene accession number as a point of reference only. However, individual transcript sequences of the same gene can differ through naturally occurring variations (e.g. polymorphisms), each with its own valid existence. This clone is substantially in agreement with the reference, but a complete review of all prevailing variants is recommended prior to use. [More info](#)

OTI Annotation: This clone was engineered to express the complete ORF with an expression tag. Expression varies depending on the nature of the gene.

Components: The ORF clone is ion-exchange column purified and shipped in a 2D barcoded Matrix tube containing 10ug of transfection-ready, dried plasmid DNA (reconstitute with 100 ul of water).

Reconstitution Method:

1. Centrifuge at 5,000xg for 5min.
2. Carefully open the tube and add 100ul of sterile water to dissolve the DNA.
3. Close the tube and incubate for 10 minutes at room temperature.
4. Briefly vortex the tube and then do a quick spin (less than 5000xg) to concentrate the liquid at the bottom.
5. Store the suspended plasmid at -20°C. The DNA is stable for at least one year from date of shipping when stored at -20°C.

RefSeq: [BC026950](#), [AAH26950](#)

RefSeq Size: 2800 bp

RefSeq ORF: 971 bp

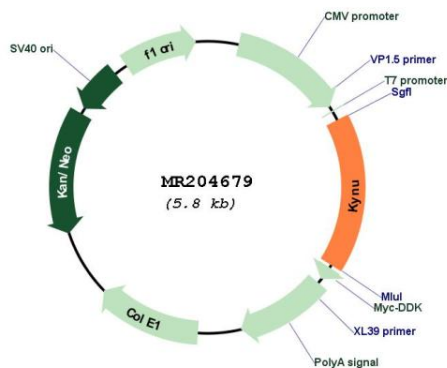
Locus ID: 70789

Cytogenetics: 2 B

MW: 36.4 kDa

Gene Summary: Catalyzes the cleavage of L-kynurenine (L-Kyn) and L-3-hydroxykynurenine (L-3OHKyn) into anthranilic acid (AA) and 3-hydroxyanthranilic acid (3-OHAA), respectively. Has a preference for the L-3-hydroxy form. Also has cysteine-conjugate-beta-lyase activity.[UniProtKB/Swiss-Prot Function]

Product images:



Circular map for MR204679