

Product datasheet for MR204670

PPP1cc (BC010613) Mouse Tagged ORF Clone

Product data:

| | |
|---------------------------|---|
| Product Type: | Expression Plasmids |
| Product Name: | PPP1cc (BC010613) Mouse Tagged ORF Clone |
| Tag: | Myc-DDK |
| Symbol: | PPP1cc |
| Synonyms: | dis2m1, PP1 |
| Mammalian Cell Selection: | Neomycin |
| Vector: | pCMV6-Entry (PS100001) |
| E. coli Selection: | Kanamycin (25 ug/mL) |
| ORF Nucleotide Sequence: | >MR204670 ORF sequence Red=Cloning site Blue=ORF Green=Tags(s) |

TTTTGTAATACGACTCACTATAGGGCGGCCGGAATTCGTCGACTGGATCCGGTACCGAGGAGATCTGCC
GCC**CGATCGCC**

ATGGCGGATATCGACAACTCAACATCGACAGCATCATCCAACGGCTGCTGGAAGTGAGAGGGTCCAAGC
CAGGCAAGAAATGCCAGCTCCAGGAGAACGAGATCCGAGGACTCTGCCTGAAGTCTCGGGAGATCTTCT
CAGTCAGCCTATCCTTTAGAACTTGAAGCACCCTCAAGATATGTGGTGACATCCACGGGCAGTACTAT
GATTTGCTCCGTCTGTTGAATACGGTGGCTTTCTCCAGAGAGCAACTATTTGTTCTCGGGACTATG
TGGACAGGGGCAAGCAGTCCCTGGAGACAATCTGCCTCTTGCTGGCCTACAAAATCAAGTATCCGGAGAA
CTTCTTTCTTCTCAGAGGAACACGAGTGCGCCAGCATCAATAGGATCTACGGATTTTATGATGAGTGT
AAAAGAAGATACAACATTAAGCTGTGAAAACGTTACAGACTGTTTTAACTGCTTGCCGATAGCAGCCA
TCGTGGACGAGAAGATATTCTGCTGTCAATGGAGTTTATCACCAGATCTTCAATCTATGGAGCAGATTCCG
GCGAATTATGAGACCAACTGATGTACCAGATCAAGGTCTCTTTGTGATCTTTTGTGGTCTGACCCCGAT
AAAGATGTCTTAGGCTGGGGTGAAAATGACAGAGGAGTGTCTTACATTTGGTGCAAGTGGTTGCAA
AATTTCTCCATAAGCATGATTTGGATCTTATATGTAGAGCCCATCAGGTGGTTGAAGATGGCTATGAGTT
TTTTGCAAAGAGGCAGTTAGTCACTCTGTTTTCTGCACCAACTACTGTGGCGAGTTTGACAATGCAGGC
GCCATGATGAGTGTGGATGAGACCCTCATGTGTTCTTCCAGATTTTAAAGCCTGCAGAGAAAAAGAAGC
CCAACGCCACGAGACCTGTCACACCACCCAGGGGTATGATCACAAGCAAGCAAAGAAA

ACGCGTACGCGGCCGCTCGAGCAGAAACTCATCTCAGAAGAGGATCTGGCAGCAAATGATATCCTGGATT
ACAAGGATGACGACGATAAGGTTTAA



[View online »](#)

Protein Sequence: >MR204670 protein sequence
Red=Cloning site Green=Tags(s)

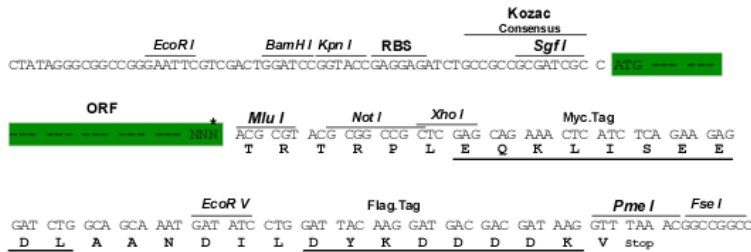
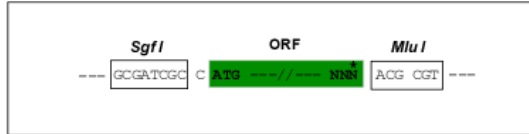
MADIDKLNIDSIIQRLLLEVRSKPGKNVQLQENEIRGLCLKSREIFLSQPILLELEAPLKICGDIHGQYY
 DLLRLFEYGGFPPESNYLF LGDYVDRGKQSLETICLLLAYKIKYPENFFLLRGNHECASINRIYGFYDEC
 KRRYNIKLWKTFTDCFNCLPIAAIVDEKIFCCHGGLSPDLQSMEQIRRMPTDVPDQGLLCDLLWSDPD
 KDVLGWGENDRGVSFTFGAEVVAKFLHKHDLDLICRAHQVVEDGYEFFAKRQLVTLFSAPNYCGEFDNAG
 AMMSVDETLMCSFQILKPAEKKKPNATRPVTPPRGMITKQAKK

TRTRPLEQKLISEEDLAANDILDYKDDDDKV

Restriction Sites: SgfI-MluI

Cloning Scheme:

Cloning sites used for ORF Shuttling:



* The last codon before the Stop codon of the ORF

ACCN: BC010613

ORF Size: 969 bp

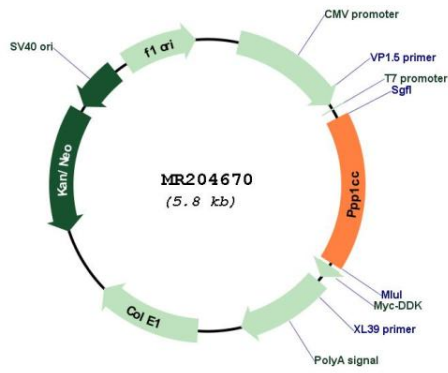
OTI Disclaimer: The molecular sequence of this clone aligns with the gene accession number as a point of reference only. However, individual transcript sequences of the same gene can differ through naturally occurring variations (e.g. polymorphisms), each with its own valid existence. This clone is substantially in agreement with the reference, but a complete review of all prevailing variants is recommended prior to use. [More info](#)

OTI Annotation: This clone was engineered to express the complete ORF with an expression tag. Expression varies depending on the nature of the gene.

Components: The ORF clone is ion-exchange column purified and shipped in a 2D barcoded Matrix tube containing 10ug of transfection-ready, dried plasmid DNA (reconstitute with 100 ul of water).

| | |
|-------------------------------|--|
| Reconstitution Method: | <ol style="list-style-type: none">1. Centrifuge at 5,000xg for 5min.2. Carefully open the tube and add 100ul of sterile water to dissolve the DNA.3. Close the tube and incubate for 10 minutes at room temperature.4. Briefly vortex the tube and then do a quick spin (less than 5000xg) to concentrate the liquid at the bottom.5. Store the suspended plasmid at -20°C. The DNA is stable for at least one year from date of shipping when stored at -20°C. |
| RefSeq: | BC010613 , AAH10613 |
| RefSeq Size: | 2166 bp |
| RefSeq ORF: | 971 bp |
| Locus ID: | 19047 |
| Cytogenetics: | 5 F |
| MW: | 37 kDa |
| Gene Summary: | <p>Protein phosphatase that associates with over 200 regulatory proteins to form highly specific holoenzymes which dephosphorylate hundreds of biological targets. Protein phosphatase 1 (PP1) is essential for cell division, and participates in the regulation of glycogen metabolism, muscle contractility and protein synthesis. Dephosphorylates RPS6KB1. Involved in regulation of ionic conductances and long-term synaptic plasticity. May play an important role in dephosphorylating substrates such as the postsynaptic density-associated Ca(2+)/calmodulin dependent protein kinase II. Component of the PTW/PP1 phosphatase complex, which plays a role in the control of chromatin structure and cell cycle progression during the transition from mitosis into interphase. In balance with CSNK1D and CSNK1E, determines the circadian period length, through the regulation of the speed and rhythmicity of PER1 and PER2 phosphorylation. May dephosphorylate CSNK1D and CSNK1E.[UniProtKB/Swiss-Prot Function]</p> |

Product images:



Circular map for MR204670