

## Product datasheet for **MR204666**

### Grp2 (NM\_010815) Mouse Tagged ORF Clone

#### Product data:

Product Type:	Expression Plasmids
Product Name:	Grp2 (NM_010815) Mouse Tagged ORF Clone
Tag:	Myc-DDK
Symbol:	Grp2
Synonyms:	Gads; GRAP-2; GRB2L; GRBLG; GrbX; Grf40; GRID; GrpL; Mona; P38
Mammalian Cell Selection:	Neomycin
Vector:	pCMV6-Entry (PS100001)
E. coli Selection:	Kanamycin (25 ug/mL)
ORF Nucleotide Sequence:	>MR204666 ORF sequence Red=Cloning site Blue=ORF Green=Tags(s)

TTTTGTAATACGACTCACTATAGGGCGGCCGGAATTCGTCGACTGGATCCGGTACCGAGGAGATCTGCC  
GCC**CGATCGCC**

ATGGAAGCCACTGCCAAGTTTGATTTTCATGGCCTCAGGTGAGGACGAACTGAGCTTTCGCACTGGAGACA  
TTCTGAAGATACTAAGCAACCAGGAGGAGTGGCTCAAGGCGGAGCTCGGAAGCCAAGAAGGATATGTGCC  
TAAGAATTTTATAGATATCGAGTTTCTGAGTGGTTCCATGAAGGCTCTCTCGACATCAAGCAGAAAAC  
TTACTCATGGGCAAGGACATTGGATTCTTCATCATCAGGGCCAGCCAGAGTTCCCAGGAGACTTCTCCA  
TCTCTGTCAGGCACGAGGACGACGTTCCAGCACTCAAAGTCATGCGTGACACCAAGGGCAATTACTTCTCT  
GTGGACCGAGAAGTTCCCATCCTTAAATAAGCTGGTGGACTACTACCGGACAACGTCATCTCCAACAG  
AAGCAGGTCTTCTTCGGGATGGAACCCAAGATCAGGGTCACCGGGCAACAGCCTGGACAGGAGGTCCC  
AGGGCGGCCCTCACCCGAGTGGAAACCGTAGGAGAAGAAATCCGACCTTCAGTGAACCGGAAGCTGTGAGA  
CCACCTTCTCTGGGTCCCAGCAGTTCACCCGACCCAGCAGCCGTCACCCAGTTCACACCAGGGCCG  
CAGCCCCCTCAACAGCAGCGTTATCTGCAGCATTTCCACCAGGACCGTGTGGGGCAGCCTGGACATAA  
ACGATGGACACTGCGGCCTTGAAGTGAGGTGAACGCCACGCTGATGCACCGGAGACACCCGACCCCGT  
ACAACCTCAGGCAGCAGGGCGGGTGCCTTGGGCCAGGGCACTGTATGACTTTGAGGCTTGGGAAGAGGAC  
GAGCTGGGATCCGAAGCGGAGAAGTGGTTGAAGTCCTGGACAGCTCAACCCATCTTGGTGACCGGCC  
GTCTGCACAACAACTGGGTCTCTTCCCTGCCAACTATGTGGCCCCATGATGCGA

**ACGCGT**ACGCGGCCGCTCGAGCAGAACTCATCTCAGAAGAGGATCTGGCAGCAAATGATATCTGGATT  
ACAAGGATGACGACGATAAGGTTTAA



[View online »](#)

**Protein Sequence:** >MR204666 protein sequence  
 Red=Cloning site Green=Tags(s)

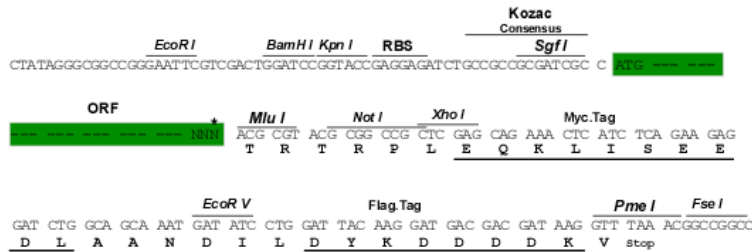
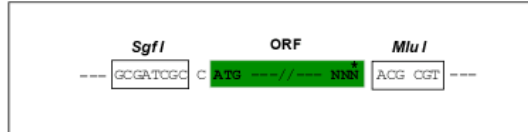
```
MEATAKFDPMASGEDEL SFRTGDILKILSNQEEWLKAELGSQEGYVPKNFIDIEFPEWFHEGLSRHQAEN
LLMGKDIGFFIIRASQSSPGDFSISVRHEDDVQHFVMDTKGNVFLWTEKFPSLNKLVYYRTTTSISKQ
KQVFLRDGTQDQGHGNSLDRRSQGGPHPSGTVGEEIRPSVNRKLSHDLPLGPQQFHHPHQQPSQFTPGP
QPPQQRYLQHFHQDRRGGSLDINDGHCGLGSEVNATLMHRRHTDPVQLQAAGRVRWARALYDFEALEED
ELGFRSGEVVEVLDSSNPSWWTGRLHNKLG LFPANYVAPMMR
```

TRTRPLEQKLISEEDLAANDILDYKDDDDKV

**Restriction Sites:** SgfI-MluI

**Cloning Scheme:**

Cloning sites used for ORF Shuttling:



\* The last codon before the Stop codon of the ORF

**ACCN:** NM\_010815

**ORF Size:** 969 bp

**OTI Disclaimer:** The molecular sequence of this clone aligns with the gene accession number as a point of reference only. However, individual transcript sequences of the same gene can differ through naturally occurring variations (e.g. polymorphisms), each with its own valid existence. This clone is substantially in agreement with the reference, but a complete review of all prevailing variants is recommended prior to use. [More info](#)

**OTI Annotation:** This clone was engineered to express the complete ORF with an expression tag. Expression varies depending on the nature of the gene.

**Components:** The ORF clone is ion-exchange column purified and shipped in a 2D barcoded Matrix tube containing 10ug of transfection-ready, dried plasmid DNA (reconstitute with 100 ul of water).

**Reconstitution Method:**

1. Centrifuge at 5,000xg for 5min.
2. Carefully open the tube and add 100ul of sterile water to dissolve the DNA.
3. Close the tube and incubate for 10 minutes at room temperature.
4. Briefly vortex the tube and then do a quick spin (less than 5000xg) to concentrate the liquid at the bottom.
5. Store the suspended plasmid at -20°C. The DNA is stable for at least one year from date of shipping when stored at -20°C.

**RefSeq:** [NM\\_010815.3](#)

**RefSeq Size:** 5475 bp

**RefSeq ORF:** 969 bp

**Locus ID:** 17444

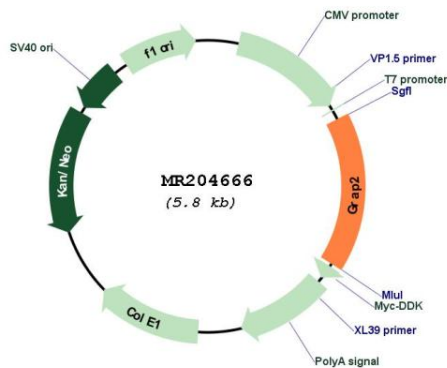
**UniProt ID:** [O89100](#)

**Cytogenetics:** 15 E1

**MW:** 36.8 kDa

**Gene Summary:** Interacts with SLP-76 to regulate NF-AT activation. Binds to tyrosine-phosphorylated shc. [UniProtKB/Swiss-Prot Function]

**Product images:**



Circular map for MR204666