

Product datasheet for **MR204659**

Ybx1 (NM_011732) Mouse Tagged ORF Clone

Product data:

Product Type:	Expression Plasmids
Product Name:	Ybx1 (NM_011732) Mouse Tagged ORF Clone
Tag:	Myc-DDK
Symbol:	Ybx1
Synonyms:	1700102N10Rik; C79409; dbpB; EF1A; MSY1; mYB-1a; Nsep1; YB-1
Mammalian Cell Selection:	Neomycin
Vector:	pCMV6-Entry (PS100001)
E. coli Selection:	Kanamycin (25 ug/mL)
ORF Nucleotide Sequence:	>MR204659 representing NM_011732 Red=Cloning site Blue=ORF Green=Tags(s)

TTTGTGTAATACGACTCACTATAGGGCGGCCGGAATTCGTCGACTGGATCCGGTACCGAGGAGATCTGCC
 GCC**CGATCGCC**

ATGAGCAGCGAGGCCGAGACCCAGCAGCCGCCGCCGCCGCCGCCGCCCTCAGCGCCGCCGACACCA
 AGCCCGGCTCCACGGGCAGCGCGCGGGTAGTGGCGGCCCGGGTGGCTCACATCGGCGGCGCCGCCG
 CGGGGACAAGAAGGTCATCGCAACGAAGTTTGGGAACAGTCAAATGGTTCAATGTAAGGAACGGATAC
 GGTTTCATCAACAGGAATGACACCAAGGAAGACGTATTTGTACACCAGACTGCCATAAAGAAGAATAACC
 CCAGGAAGTACCTTCGCAGTGTAGCGATGGAGAGACTGTGGAGTTTGATGTTGTTGAAGGAGAAAAGGG
 TGGGAGGCAGCAATGTTACAGGCCCTGGTGGAGTTCCAGTTCAAGGCAGTAAATACGCAGCAGACCGT
 AACCATTTATAGACGCTATCCACGTCGTAGGGGTCTCCACGCAATTACCAGCAAAATTACCAGAATAGTG
 AGAGTGGGGAAGAAGCAGGGATCGGAAAGCGCTCCTGAAGGCCAGGCCCAACAACGCCGGCCCTATCG
 CAGGCGAAGGTTCCACCTTACTACATGCGGAGACCTATGCGCGTCGACCACAGTATTCACCCCCCT
 GTGCAAGGAGAAGTGATGGAGGGTGCTGACAACCAGGGTGCCAGGAGAGCAAGGTAGACCAGTGAGACAGA
 ATATGTATCGGGTTACAGACCAGATTCCGAAGGGGCCCTCTCGCCAAAGACAGCCTAGAGAGGATGG
 CAATGAAGAGGACAAAGAAAATCAAGGAGATGAGACCAAGGTCAGCAGCCACCTCAACGTGGTATCGC
 CGAAACTTCAATTACCGACGCAGACGCCAGAGAACCCTAAACCACAAGATGGCAAAGAGACAAAAGCAG
 CCGATCCACAGCTGAGAATTCGTCCGCTCCGAGGCTGAGCAGGGCGGGGCTGAG

ACGCGTACGCGGCCGCTCGAGCAGAACTCATCTCAGAAGAGGATCTGGCAGCAATGATATCCTGGATT
 ACAAGGATGACGACGATAAGGTTTAA


[View online »](#)

Protein Sequence: >MR204659 representing NM_011732
 Red=Cloning site Green=Tags(s)

MSSEAETQPPAAPAAALSAADTKPGSTGSGAGSGGPGGLTSAAPAGGDKKVIATKVLGTVKWFNVRNGY
 GFINRNDTKEDVFVHQTAIKNNPRKYLRSVGDGETVEFDVVEGEKGAEEANVTGPGGVPVQGSKYAADR
 NHYRRYPRRRGPPRNYQQNYQNSESGEKGESAPEGQAQRRPYRRRRFPYMYRRPYARRPQYSNPP
 VQGEVMEGADNQGAGEQGRPVRQNMRYRPRFRRGPPRQRPREDGNEEDKENQGDETQGGQPPQRRYR
 RNFNYRRRRPENPKPDGKETKAADPPAENSSAPEAEQGGAE

TRTRPLEQKLISEEDLAANDILDYKDDDDKV

Chromatograms: https://cdn.origene.com/chromatograms/ja2147_a08.zip

Restriction Sites: SgfI-MluI

Cloning Scheme:



ACCN: NM_011732

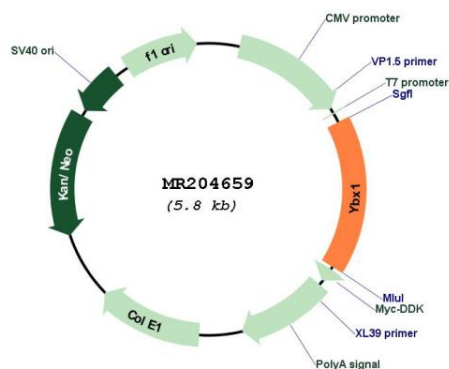
ORF Size: 966 bp

OTI Disclaimer: Due to the inherent nature of this plasmid, standard methods to replicate additional amounts of DNA in E. coli are highly likely to result in mutations and/or rearrangements. Therefore, OriGene does not guarantee the capability to replicate this plasmid DNA. Additional amounts of DNA can be purchased from OriGene with batch-specific, full-sequence verification at a reduced cost. Please contact our customer care team at custsupport@origene.com or by calling 301.340.3188 option 3 for pricing and delivery.

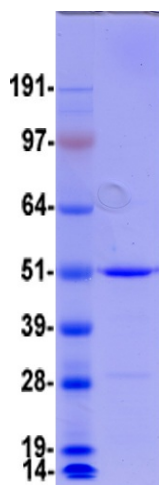
The molecular sequence of this clone aligns with the gene accession number as a point of reference only. However, individual transcript sequences of the same gene can differ through naturally occurring variations (e.g. polymorphisms), each with its own valid existence. This clone is substantially in agreement with the reference, but a complete review of all prevailing variants is recommended prior to use. [More info](#)

OTI Annotation:	This clone was engineered to express the complete ORF with an expression tag. Expression varies depending on the nature of the gene.
Components:	The ORF clone is ion-exchange column purified and shipped in a 2D barcoded Matrix tube containing 10ug of transfection-ready, dried plasmid DNA (reconstitute with 100 ul of water).
Reconstitution Method:	<ol style="list-style-type: none"> 1. Centrifuge at 5,000xg for 5min. 2. Carefully open the tube and add 100ul of sterile water to dissolve the DNA. 3. Close the tube and incubate for 10 minutes at room temperature. 4. Briefly vortex the tube and then do a quick spin (less than 5000xg) to concentrate the liquid at the bottom. 5. Store the suspended plasmid at -20°C. The DNA is stable for at least one year from date of shipping when stored at -20°C.
Note:	Plasmids are not sterile. For experiments where strict sterility is required, filtration with 0.22um filter is required.
RefSeq:	NM_011732.2 , NP_035862.2
RefSeq Size:	2191 bp
RefSeq ORF:	969 bp
Locus ID:	22608
UniProt ID:	P62960
Cytogenetics:	4 D2.1
MW:	36.2 kDa
Gene Summary:	Mediates pre-mRNA alternative splicing regulation. Component of the CRD-mediated complex that promotes MYC mRNA stability. Binds to splice sites in pre-mRNA and regulates splice site selection. Binds and stabilizes cytoplasmic mRNA. Contributes to the regulation of translation by modulating the interaction between the mRNA and eukaryotic initiation factors. Binds to promoters that contain a Y-box (5'-CTGATTGGCCAA-3'), such as HLA class II genes. Regulates the transcription of numerous genes. Promotes separation of DNA strands that contain mismatches or are modified by cisplatin. Has endonucleolytic activity and can introduce nicks or breaks into double-stranded DNA (in vitro). May play a role in DNA repair. Its transcriptional activity on the multidrug resistance gene MDR1 is enhanced in presence of the APEX1 acetylated form at 'Lys-6' and 'Lys-7'. Binds preferentially to 5'-[CU]CUGCG-3' motif in vitro (By similarity).[UniProtKB/Swiss-Prot Function]

Product images:



Circular map for MR204659



Coomassie blue staining of purified Ybx1 protein (Cat# [TP504659]). The protein was produced from HEK293T cells transfected with Ybx1 cDNA clone (Cat# MR204659) using MegaTran 2.0 (Cat# [TT210002]).