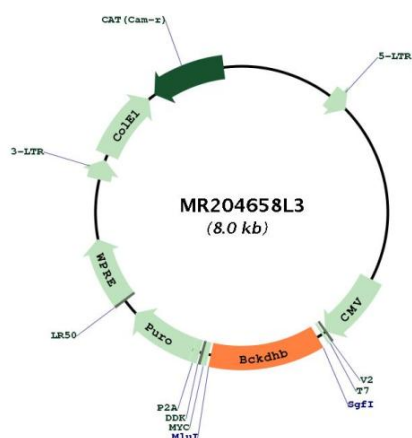




<b>OTI Disclaimer:</b>	The molecular sequence of this clone aligns with the gene accession number as a point of reference only. However, individual transcript sequences of the same gene can differ through naturally occurring variations (e.g. polymorphisms), each with its own valid existence. This clone is substantially in agreement with the reference, but a complete review of all prevailing variants is recommended prior to use. <a href="#">More info</a>
<b>OTI Annotation:</b>	This clone was engineered to express the complete ORF with an expression tag. Expression varies depending on the nature of the gene.
<b>Components:</b>	The ORF clone is ion-exchange column purified and shipped in a 2D barcoded Matrix tube containing 10ug of transfection-ready, dried plasmid DNA (reconstitute with 100 ul of water).
<b>Reconstitution Method:</b>	<ol style="list-style-type: none"> <li>1. Centrifuge at 5,000xg for 5min.</li> <li>2. Carefully open the tube and add 100ul of sterile water to dissolve the DNA.</li> <li>3. Close the tube and incubate for 10 minutes at room temperature.</li> <li>4. Briefly vortex the tube and then do a quick spin (less than 5000xg) to concentrate the liquid at the bottom.</li> <li>5. Store the suspended plasmid at -20°C. The DNA is stable for at least one year from date of shipping when stored at -20°C.</li> </ol>
<b>Note:</b>	Plasmids are not sterile. For experiments where strict sterility is required, filtration with 0.22um filter is required.
<b>RefSeq:</b>	<a href="#">NM_199195.1</a> , <a href="#">NP_954665.1</a>
<b>RefSeq Size:</b>	1419 bp
<b>RefSeq ORF:</b>	969 bp
<b>Locus ID:</b>	12040
<b>UniProt ID:</b>	<a href="#">Q6P3A8</a>
<b>Cytogenetics:</b>	9 E2
<b>Gene Summary:</b>	This gene encodes the beta chain of the branched chain alpha ketoacid dehydrogenase (Bckdh) complex. The encoded protein exists in a heterotetrameric complex containing the Bckdh alpha subunit to form the E1 catalytic component of Bckdh complex. The Bckdh complex catalyzes the oxidative decarboxylation of branched chain ketoacids to their corresponding acyl-CoA esters, during the catabolism of leucine, isoleucine and valine. In humans, certain mutations in this gene cause maple syrup urine disease. Alternative splicing results in multiple transcript variants encoding different isoforms. A pseudogene for this gene has been identified. [provided by RefSeq, Apr 2015]

## Product images:



Circular map for MR204658L3