

Product datasheet for MR204631

Duoxa2 (NM_025777) Mouse Tagged ORF Clone

Product data:

Product Type:	Expression Plasmids
Product Name:	Duoxa2 (NM_025777) Mouse Tagged ORF Clone
Tag:	Myc-DDK
Symbol:	Duoxa2
Synonyms:	9030623N16Rik; Nip2
Mammalian Cell Selection:	Neomycin
Vector:	pCMV6-Entry (PS100001)
E. coli Selection:	Kanamycin (25 ug/mL)
ORF Nucleotide Sequence:	>MR204631 ORF sequence Red=Cloning site Blue=ORF Green=Tags(s)

TTTTGTAATACGACTCACTATAGGGCGGCCGGAATTCGTCGACTGGATCCGGTACCGAGGAGATCTGCC
GCC**CGATCGCC**

ATGACTGCGTGGGACGGGTGCTACCCTTTACCCAGCCAGGCATGCCGCCAGCTTCAGCGTACCGC
TGCTCATTGTTATCCTGGTGTCTTGTCTTTGGCTGCTAGCTTCTGTTTCATCTTGCCTGGAATCCGTGG
GCACTCGCGCTGGTTCTGGTTGGTAAGAGTCTTCTTAGCCTGTTTCATAGGTGCCGAAATGTGGCTGTG
CACTTCAGTGGAGACTGGTTCGTGGGAGAGTGTGGACCAACACATCCTACAAAGCCTTCAGTCCATCCC
GTGTTCAAGTCCATGTCGGTCTGCACGTGGGGCTGGCGGGCGTTAACATTACACTCCGAGGAACACCGAG
GCAGCAGCTGAACGAGACCAATTGACTACAATGAGCGTTTCACTTGGCGTCTGAACGAAGACTACACCAAG
GAGTATGTCCATGCCTTGAGAAGGGACTGCCGGACCCAGTGCTATACCTGGCAGAGAAGTTCACACCGA
GCAGTCTTGGGGCTGTACCACCAATATCACCTGGCCGGTCACTATGCCGCCGCAACACTGTGGGTGGC
ATTCTGCTTCTGGATCATCGCCAATGCGTGTCTCCATGCCCGCCCACTCTACGGAGGCTGGCTTTG
CTCACCACCGTGCCTTCACGCTCTTGGTGTCTTGCCTTCGCCTCGATTTCCAGCGTGGCCGCTGTGCC
ACTTCCGCTGGGCTCCGCCGCTCCTCACGCCTTACTACGGCGCTCCTTTGGCTCACGCTGGCCACCGG
CATCCTGAGCCTCCTCCTCGGAGGGCGGTGGTGATTCTCCACTATACTCGGCCAGCGCCCTTCGCTCC
TTTCTGGATCTAAGTGTCAAAGACTGTAGCAACCAGGCTAAAGGAAACTCACCTCTACCCTCAACAACC
CGCAACACGAACAGTTGAAGAGTCCAGACTTAAATATTACCACTCTCTG

ACGCGTACGCGGCCGCTCGAGCAGAAACTCATCTCAGAAGAGGATCTGGCAGCAAATGATATCCTGGATT
ACAAGGATGACGACGATAAGGTTTAA



[View online »](#)

Protein Sequence: >MR204631 protein sequence
 Red=Cloning site Green=Tags(s)

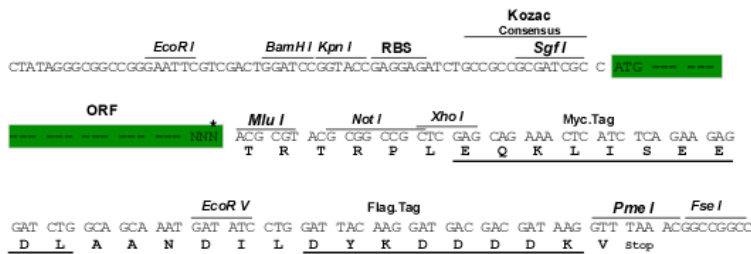
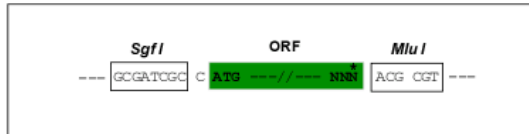
MTAWDGVLPFYQPQPHAASFVPLLLIVILVFLSLAASFLFILPGIRGHSRWFVLRVLLSLFIGAEIVAV
 HFSGDWFVGRVWNTNTSYKAFSPSRVQVHVGLHVGLAGVNITLRGTTPRQQLNETIDYNERFTWRLNEDYTK
 EYVHALEKGLPDPVLYLAEKFTSPSPCGLYHQYHLAGHYAAATLWVAFCFWIIANALLSMPAPLYGGLAL
 LTTGAFTLFGVFAFASISSVPLCHFRLGSAVLPYYGASFWLTLATGILSLLLGGAVVILHYTRPSALRS
 FLDL SVKDCSNQAKGNSPLTLNPNQHEQLKSPDLNITLL

TRTRPLEQKLISEEDLAANDILDYKDDDDKV

Restriction Sites: SgfI-MluI

Cloning Scheme:

Cloning sites used for ORF Shuttling:



* The last codon before the Stop codon of the ORF

ACCN: NM_025777

ORF Size: 963 bp

OTI Disclaimer: The molecular sequence of this clone aligns with the gene accession number as a point of reference only. However, individual transcript sequences of the same gene can differ through naturally occurring variations (e.g. polymorphisms), each with its own valid existence. This clone is substantially in agreement with the reference, but a complete review of all prevailing variants is recommended prior to use. [More info](#)

OTI Annotation: This clone was engineered to express the complete ORF with an expression tag. Expression varies depending on the nature of the gene.

Components: The ORF clone is ion-exchange column purified and shipped in a 2D barcoded Matrix tube containing 10ug of transfection-ready, dried plasmid DNA (reconstitute with 100 ul of water).

Reconstitution Method:

1. Centrifuge at 5,000xg for 5min.
2. Carefully open the tube and add 100ul of sterile water to dissolve the DNA.
3. Close the tube and incubate for 10 minutes at room temperature.
4. Briefly vortex the tube and then do a quick spin (less than 5000xg) to concentrate the liquid at the bottom.
5. Store the suspended plasmid at -20°C. The DNA is stable for at least one year from date of shipping when stored at -20°C.

RefSeq: [NM_025777.1](#), [NM_025777.2](#), [NP_080053.1](#)

RefSeq Size: 1592 bp

RefSeq ORF: 963 bp

Locus ID: 66811

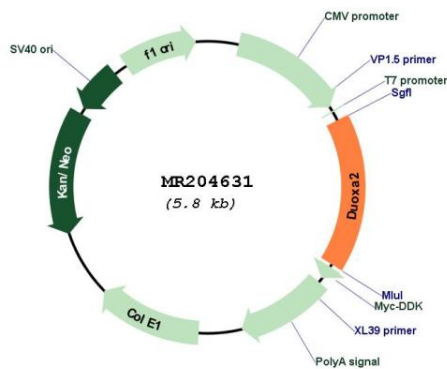
UniProt ID: [Q9D311](#)

Cytogenetics: 2 E5

MW: 35.4 kDa

Gene Summary: Required for the maturation and the transport from the endoplasmic reticulum to the plasma membrane of functional DUOX2. May play a role in thyroid hormone synthesis (By similarity). [UniProtKB/Swiss-Prot Function]

Product images:



Circular map for MR204631