

Product datasheet for MR204612

Peli2 (BC027062) Mouse Tagged ORF Clone

Product data:

Product Type:	Expression Plasmids
Product Name:	Peli2 (BC027062) Mouse Tagged ORF Clone
Tag:	Myc-DDK
Symbol:	Peli2
Synonyms:	AW047589; BB129927
Mammalian Cell Selection:	Neomycin
Vector:	pCMV6-Entry (PS100001)
E. coli Selection:	Kanamycin (25 ug/mL)
ORF Nucleotide Sequence:	>MR204612 representing BC027062 Red=Cloning site Blue=ORF Green=Tags(s)

TTTTGTAATACGACTCACTATAGGGCGGCCGGGAATTCGTCGACTGGATCCGGTACCGAGGAGATCTGCC
GCC**CGGATCGCC**

ATGTTTCAGGTGGGCAGGTCAACAGAAAGCCCCATTGACTTCGTGGTCACAGACACGGTTTCCGGCGGTC
AGAACGAAGATGCCAGATCACACAGAGCACCATCTCTAGGTTTCGCATGCAGGATCGTGTGTGACAGGAA
CGAGCCATACACAGCACGCATATTTGCGGCAGGATTCGATTCTTCCAAAAATATCTTTCTGGAGAGAAA
GCAGAAAATGGAAAAACCTGATGGACACATGGATGGACTCACTACCAACGGTGTCTGGTGATGCACC
CGCAAGGAGGCTTACCAGGAATCCCAGCCTGGAGTCTGGAGAGAGATCTGTCTGTGGGGATGTGTA
CACCTTGCAGAGACCAGGTCCGCCAGCAGAGGGGAAAGCTGGTGGAAAGTGAGACCAACGTCCTGCAA
GACGGCTCCCTCATTGACCTGTGTGGGGCCACTCTCTCTGGAGAACCGCAGATGGCCTTTTTACGCTC
CTACTCAGAAGCACATAGAAGCCCTCCGGCAGGAGATCAATGCAGCCGACCCAGTGCCTGGGGCT
TAACACCTGGCCTTCCCAGCATCAACCGGAAGGAAGTGGTGGAAAGAGAAGCAGCCCTGGGCATACCTG
AGCTGCGGCCATGTGCACGGCTACCACAGCTGGGGCCATCGGAGCGACCGGAAGCAACGAGAGGGAGT
GTCCATGTGCAGGACTGTGGGCCCTACGTCCCTCTCTGGCTGGGCTGTGAGGCAGGATTTTATGTCGA
TGCGGGACCCCAACTCAGCTTTCACCCCTCGGGCCAGCTGTTCAGAGAAGTCTGCCAAGTACTGG
TCGCAGATCCCCTGCCCCACGGAACGCACGCGTTTACGCGCCCTGTCCGTTCTGCGCCACGCAGCTGG
TTGGTGAACAGAACTGCATCAAATTGATTTTCCAAGGTCCAGTGGAC

AG**CGGACCG**ACGCGTACGCGCCGCTCGAGCAGAACTCATCTCAGAAGAGGATCTGGCAGCAAATGATATCC
TGGATTACAAGGATGACGACGATAAGGTTTAA



[View online »](#)

Protein Sequence: >MR204612 representing BC027062
 Red=Cloning site Green=Tags(s)

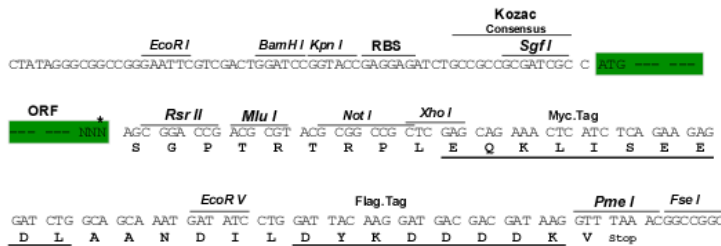
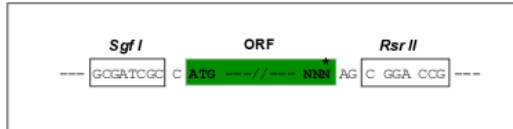
MFQVGRSTESPIDFVVTDTVSGGQNEDAQITQSTISRACRIVCDRNEPYTARIFAAGFDSSKNIFLGEK
 AAKWKNPDGHMDGLTTNGVLVMHPQGGFTEESQPGVWREISVCGDVYTLRETRSAQQRGKLVSEETNVLQ
 DGSLIDL CGATLLWRTADGLFHAPTQKHIEALRQEINAARPQCPVGLNTLAFPSINRKEVVEEKQPWAYL
 SCGHVHGYSWGHRSDAEANERECPCMCRTVGPYVPLWL GCEAGFYVDAGPPTHAFTPCGHVCSEKSAKYW
 SQIPLPHGTHAFHAACPFCATQLVGEQNCIKLIFQGPVD

SGPTRRRL**EQQLISEEDLAANDILDYKDDDDKV**

Restriction Sites: SgfI-RsrII

Cloning Scheme:

Cloning sites used for ORF Shuttling:



* The last codon before the Stop codon of the ORF

ACCN: BC027062

ORF Size: 957 bp

OTI Disclaimer: The molecular sequence of this clone aligns with the gene accession number as a point of reference only. However, individual transcript sequences of the same gene can differ through naturally occurring variations (e.g. polymorphisms), each with its own valid existence. This clone is substantially in agreement with the reference, but a complete review of all prevailing variants is recommended prior to use. [More info](#)

OTI Annotation: This clone was engineered to express the complete ORF with an expression tag. Expression varies depending on the nature of the gene.

Components: The ORF clone is ion-exchange column purified and shipped in a 2D barcoded Matrix tube containing 10ug of transfection-ready, dried plasmid DNA (reconstitute with 100 ul of water).

Reconstitution Method:

1. Centrifuge at 5,000xg for 5min.
2. Carefully open the tube and add 100ul of sterile water to dissolve the DNA.
3. Close the tube and incubate for 10 minutes at room temperature.
4. Briefly vortex the tube and then do a quick spin (less than 5000xg) to concentrate the liquid at the bottom.
5. Store the suspended plasmid at -20°C. The DNA is stable for at least one year from date of shipping when stored at -20°C.

RefSeq: [BC027062.1](#)

RefSeq Size: 1732 bp

RefSeq ORF: 959 bp

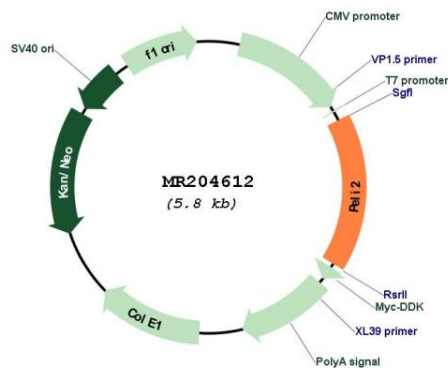
Locus ID: 93834

Cytogenetics: 14 24.6 cM

MW: 63.5 kDa

Gene Summary: E3 ubiquitin ligase catalyzing the covalent attachment of ubiquitin moieties onto substrate proteins. Involved in the TLR and IL-1 signaling pathways via interaction with the complex containing IRAK kinases and TRAF6. Mediates IL1B-induced IRAK1 'Lys-63'-linked polyubiquitination and possibly 'Lys-48'-linked ubiquitination. May be important for LPS- and IL1B-induced MAP3K7-dependent, but not MAP3K3-dependent, NF-kappa-B activation. Can activate the MAP (mitogen activated protein) kinase pathway leading to activation of ELK1. [UniProtKB/Swiss-Prot Function]

Product images:



Circular map for MR204612