

Product datasheet for **MR204577**

Knop1 (NM_001168220) Mouse Tagged ORF Clone

Product data:

Product Type: Expression Plasmids
Product Name: Knop1 (NM_001168220) Mouse Tagged ORF Clone
Tag: Myc-DDK
Symbol: Knop1
Synonyms: 2310008H09Rik; Tsg118
Mammalian Cell Selection: Neomycin
Vector: pCMV6-Entry (PS100001)
E. coli Selection: Kanamycin (25 ug/mL)
ORF Nucleotide Sequence: >MR204577 ORF sequence
Red=Cloning site Blue=ORF Green=Tags(s)

TTTTGTAATACGACTCACTATAGGGCGGCCGGAATTCGTCGACTGGATCCGGTACCGAGGAGATCTGCC
GCC**CGATCGCC**

ATGGTCAGCAAGACCCAGAAAAGCAGACCTGGGCCACAACCTCCAGAGAAGAAGAAAAAGAAGAAGA
AAAAGAGAGTGGTTGCAAATGTCTCAGAACCCAGAGACTCAATACTCAGTCTTAACAGTAATGATTATTT
TATAGACGCTTCTCCTCCGAGGGCCACGTCCTTCTAACAATGTGGATGAGGTGCAGATCCCCGAGATG
TCACTGAGCAAGAGAAAAGAAAAAAGTCCTGTAGCACTCACTTGGAGGAGTGCCTGGGGCTGAGC
CTACACGGCAAGACAGAAAAGTCACCTAGCCCTAGAAGGCAGGCCCTTGAGCAGTCAGCAGAAGGCCT
CATCAGAGAGAAGAAAAGAGAGGGCGGAAGTCCTTATCAAAAGGCTGCCTCCCAAGGCTCAGGGCTGAAG
ACCTCCCCAGACCCCAAGCATGCCAAGGAGGAGTCAGACACAGACTTAGAGGTGGTACTGGAGAAAAAG
GCAACATGGATGAGACCTGCATAGACCAGGTGAGACGGAAGGCCTTGCAAGAAGAGATTGATCGTGAGTC
GGCAAGACAGAGGCTTCAGAACCACAAAAGTGGACAGTGGGTTTGTCCGGTCAAGACAGAGGCTTCAGAA
CCCAAAAAGTGGACGGGAACCCAGTTTGGCCAGTGGGATACCGCCGGCTTTGAAAATGAAGAACAGAAAGC
TAAAATTCCTGAAGCTTATGGGTGGCTTAAAGCATCTGTCCCGTCATTCAGCCGCCCTCCAGCATGAC
TATCAGGTCCAACATGGCCCTGGACAAAAGTCTTCAGAAATGCTCCAGCAGAGTCTGCAGCAGGACTAT
GACCGGCCATGAGCTGGAAGTACAGCCACGGGCTGGCCTTAACTCTGAGGCCGAAAGGTCT
TCTACATTGACCGAATGCCTCCAAGTCTATCAAGTTGCAAGAT

ACGCGTACGCGGCCGCTCGAGCAGAAACTCATCTCAGAAGAGGATCTGGCAGCAAATGATATCCTGGATT
ACAAGGATGACGACGATAAGGTTTAA



[View online »](#)

Protein Sequence: >MR204577 protein sequence
Red=Cloning site Green=Tags(s)

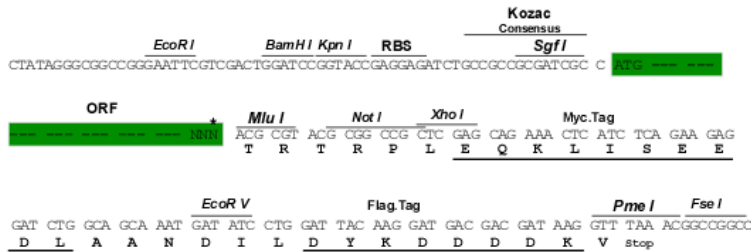
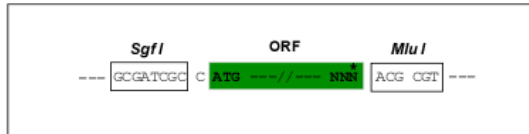
MVSKTQKADLGPQLPEKXXXXXXXXXRVVANVSEPETQYSVLNSNDYFIDASPPRATSPSNNVDEVQIPEM
 SLSKRXXXXXXXXXSCSTHLEELGAEPTRARQKKSPPRRQALEQSAEGLIREKXXXXXXXXXSLKAASQGSGLK
 TSPDPKHAKESDSDLLEVLEKKGNDMTCIDQVRRKALQEEIDRESGKTEASEPKKWTVGLSVKTEASE
 PKKWTGTQFGQWDTAGFENEEQKLKFLKLMGGFKHLSPSF SRPPSMTIRSNMALDKKSSEMLQQSLQQDY
 DRAMSWKYSHGAGLGFNSEARKVFYIDRNASKSIKLQD

TRTRPLEQKLISEEDLAANDILDYKDDDDKV

Restriction Sites: SgfI-MluI

Cloning Scheme:

Cloning sites used for ORF Shuttling:



* The last codon before the Stop codon of the ORF

ACCN: NM_001168220

ORF Size: 957 bp

OTI Disclaimer: The molecular sequence of this clone aligns with the gene accession number as a point of reference only. However, individual transcript sequences of the same gene can differ through naturally occurring variations (e.g. polymorphisms), each with its own valid existence. This clone is substantially in agreement with the reference, but a complete review of all prevailing variants is recommended prior to use. [More info](#)

OTI Annotation: This clone was engineered to express the complete ORF with an expression tag. Expression varies depending on the nature of the gene.

Components: The ORF clone is ion-exchange column purified and shipped in a 2D barcoded Matrix tube containing 10ug of transfection-ready, dried plasmid DNA (reconstitute with 100 ul of water).

Reconstitution Method:

1. Centrifuge at 5,000xg for 5min.
2. Carefully open the tube and add 100ul of sterile water to dissolve the DNA.
3. Close the tube and incubate for 10 minutes at room temperature.
4. Briefly vortex the tube and then do a quick spin (less than 5000xg) to concentrate the liquid at the bottom.
5. Store the suspended plasmid at -20°C. The DNA is stable for at least one year from date of shipping when stored at -20°C.

RefSeq: [NM_001168220.1](#), [NP_001161692.1](#)

RefSeq Size: 4761 bp

RefSeq ORF: 957 bp

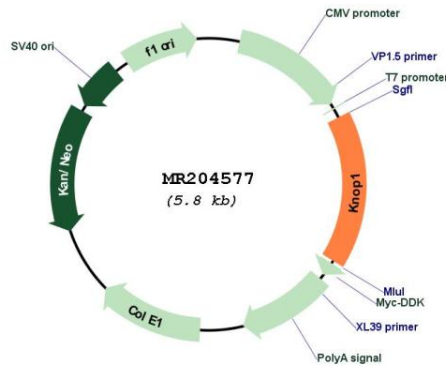
Locus ID: 66356

UniProt ID: [Q9Z2Q2](#)

Cytogenetics: 7 F2

MW: 35.9 kDa

Product images:



Circular map for MR204577