

Product datasheet for MR204576

Ube2j1 (NM_019586) Mouse Tagged ORF Clone

Product data:

Product Type:	Expression Plasmids
Product Name:	Ube2j1 (NM_019586) Mouse Tagged ORF Clone
Tag:	Myc-DDK
Symbol:	Ube2j1
Synonyms:	0710008M05Rik; 1110030I22Rik; Ncube; NCUBE-1; Ncube1; Ubc6p
Mammalian Cell Selection:	Neomycin
Vector:	pCMV6-Entry (PS100001)
E. coli Selection:	Kanamycin (25 ug/mL)
ORF Nucleotide Sequence:	>MR204576 ORF sequence Red=Cloning site Blue=ORF Green=Tags(s)

TTTTGTAATACGACTCACTATAGGGCGGCCGGAATTCGTCGACTGGATCCGGTACCGAGGAGATCTGCC
GCC**CGATCGCC**

ATGGAGACCCGCTACAACCTGAAGAGCCCGCCGTTAAGCGATTGATGAAAGAAGCTGCAGAATTGAAAG
ATCCAACAGATCATTACCACGCTCAGCCTCTGGAGGATAACCTTTTTGAATGGCACTTCACAGTTAGAGG
GCCCCAGATCCGATTTTGATGGAGGAGTTTACCATGGACGCATAGTACTGCCACCAGAGTACCCATG
AAACCACCAAGCATTATCCTGCTAACAGCTAATGGACGATTTGAAGTAGCAAGAAGATCTGTTTAAAGCA
TCTCAGGACATCATCCTGAAACCTGGCAGCCTTCATGGAGCATAAGGACAGCCTTGCTGGCCATCATCGG
GTTTATGCCGACTAAAGGAGAGGGGCCATAGGTTCTCTAGATTACACACCAGAGGAGAGAAGAGCGCTT
GCCAAAAAATCGCAAGATTTCTGTTGTGAAGGCTGTGGCTCTGCCATGAAGGATGTCTGTGCCATTAA
AATCTGGAAGTGTTCAAGCCAGGCTGACCAAGAAGCCAAAGAGCTGGCCAGACAGATTAGTTTTAAGGC
CGAAGTCAATTCATCTGGAAAGACTATCGCTGAATCAGACTTAAACCAAGTGTCTCACTAAATGACTCA
CAAGACGATTTACCTACAACATTCCAGGGTGTACAGCAAGCACATCGTATGGCGCCAGAATCCATCAG
GAGCACCTTGCCACAACCTACCCAGCCAGCTCCTAAGAATACCTCCATGAGCCCTCGGCAGCGCAGAGC
CCAGCAACAGAGTCAGAGAAGGCCATCCACTTCCCCGATGTGCTCCAAGGCCAGCCACCAAGAGCCAC
CACACAGAGCACGGCGGGTCCGCCATGCTGATCATCATCCTGACTTTAGCATTGGCGGCTTTATATTCC
GACGAATATATCTGGCCAATGAGTACATATTTGACTTTGAGTTA

ACGCGTACGCGGCCGCTCGAGCAGAAACTCATCTCAGAAGAGGATCTGGCAGCAAATGATATCCTGGATT
ACAAGGATGACGACGATAAGGTTTAA



[View online »](#)

Protein Sequence: >MR204576 protein sequence
Red=Cloning site Green=Tags(s)

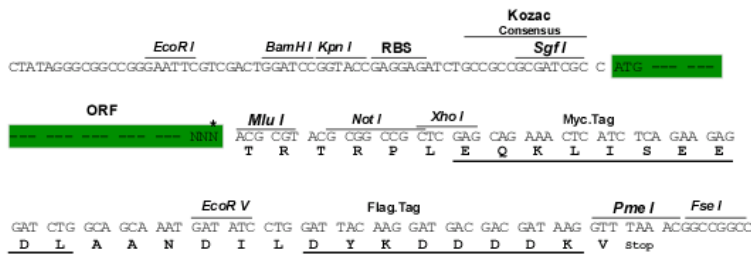
METRYNLKSPAVKRLMKEAAELKDPTDHYHAQPLEDNLFEWHFTVRGPPDSDFDGGVYHGRIVLPPEYPM
 KPPSIILLTANGRFEVGGKICLSISGHPETWQPSWSIRTALLAIIIGFMPKGEAIGSLDYTPERRAL
 AKKSQDFCCEGCGSAMKDVLLPLKSGSGSSQADQEAKELARQISFKAENVSSGKTI AESDLNQCFLNDS
 QDDLPTTFQGATASTSYGAQNPSGAPLPQPTQPAPKNTSMSRQRRAQQSQRRPSTSPDVLQGGPPRAH
 HTEHGGSAMLIIILTLALAALIFRRIYLANEYIFDFEL

TRTRPLEQKLISEEDLAANDILDYKDDDDKV

Restriction Sites: SgfI-MluI

Cloning Scheme:

Cloning sites used for ORF Shuttling:



* The last codon before the Stop codon of the ORF

ACCN: NM_019586

ORF Size: 957 bp

OTI Disclaimer: The molecular sequence of this clone aligns with the gene accession number as a point of reference only. However, individual transcript sequences of the same gene can differ through naturally occurring variations (e.g. polymorphisms), each with its own valid existence. This clone is substantially in agreement with the reference, but a complete review of all prevailing variants is recommended prior to use. [More info](#)

OTI Annotation: This clone was engineered to express the complete ORF with an expression tag. Expression varies depending on the nature of the gene.

Components: The ORF clone is ion-exchange column purified and shipped in a 2D barcoded Matrix tube containing 10ug of transfection-ready, dried plasmid DNA (reconstitute with 100 ul of water).

Reconstitution Method:

1. Centrifuge at 5,000xg for 5min.
2. Carefully open the tube and add 100ul of sterile water to dissolve the DNA.
3. Close the tube and incubate for 10 minutes at room temperature.
4. Briefly vortex the tube and then do a quick spin (less than 5000xg) to concentrate the liquid at the bottom.
5. Store the suspended plasmid at -20°C. The DNA is stable for at least one year from date of shipping when stored at -20°C.

RefSeq: [NM_019586.1](#), [NM_019586.2](#), [NM_019586.3](#), [NP_062532.2](#)

RefSeq Size: 3522 bp

RefSeq ORF: 957 bp

Locus ID: 56228

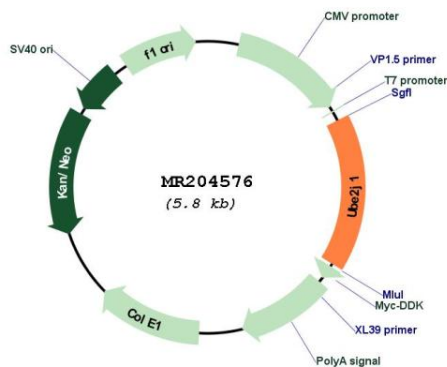
UniProt ID: [Q9JJZ4](#)

Cytogenetics: 4 A5

MW: 35 kDa

Gene Summary: Catalyzes the covalent attachment of ubiquitin to other proteins. Functions in the selective degradation of misfolded membrane proteins from the endoplasmic reticulum (ERAD).
[UniProtKB/Swiss-Prot Function]

Product images:



Circular map for MR204576