

Product datasheet for MR204566

Tfec (NM_031198) Mouse Tagged ORF Clone

Product data:

Product Type:	Expression Plasmids
Product Name:	Tfec (NM_031198) Mouse Tagged ORF Clone
Tag:	Myc-DDK
Symbol:	Tfec
Synonyms:	BB107417; bHLHe34; Tcfec
Mammalian Cell Selection:	Neomycin
Vector:	pCMV6-Entry (PS100001)
E. coli Selection:	Kanamycin (25 ug/mL)
ORF Nucleotide Sequence:	>MR204566 ORF sequence Red=Cloning site Blue=ORF Green=Tags(s)

TTTTGTAATACGACTCACTATAGGGCGGCCGGAATTCGTCGACTGGATCCGGTACCGAGGAGATCTGCC
GCC**CGATCGCC**

ATGACCTTTGACTGTGGGTATGCGACCAGACTCTCAAGAGAGCGCAGCCTCCAGCAGCCAGCTGCATGC
CTCTGGCAGAGCATGAACCCATGAGCCCAGACAGTGTGCTGGCTGTGCAGGAAACCCATTACAAAATCT
GCTGGCTCTTGGGAAAAAGATGGTGTGAGAAATGGCATTATCTGGGAGTATTTGGATGTGTACAGT
GATGAGCAGGGCATTCTTCAGCTAATGCTGGTCTCACGGATGCTCCTTGTCCAAGTATTCTACCCATGA
GAAAGGAAATTGCAGAACTGATGGTAGAGCTTTGGCAAAGGAGAGACAGAAAAAGACAACCACAACCT
CATTGAAAGAAGAAGAAGGTATAATATTAATTACCGAATCAAGGAGCTTGGCACTTTATCCAAAGTCT
AATGATCCTGATATGCGCTGGAACAAAGGGACCATTCTAAAGGCATCAGTGGACTACATCAAGTGGCTAC
AAAAAGAACAACAGAGAGCCCGGGAGTTAGAACACAGACAGAAGAAATTAGAACATGCTAACCGTCAGCT
TAGGCTCCGGATTAGGAACTAGAAATACAAGCACGTGCTCATGGTCTACCAATCCTGGCTTCACTCGGC
ACAGCTGATGTTGGTACCCACATCACCAGCAGCAGACCCATCCTGAGAGGAACTTAGGAGGCTGTTGCT
TACAACTGACTCCAACCTCAGGGGACAAGCCCGGAGTCTATGAGCAAGCTGTGGCTTTCTCTGATCCATT
GTCTCACTTACAGATTTATCCTTTAGTGCCGCTTTGAAAGAGGAACAAGATTGGATGGCATGCTACTA
AGTGATAACAATATGCCCTTTGGGACGGACCCACTACTCTGCCATTTCCCTCGCATTTCCAAAGCTA
GCAGCCGAAGCAGCCTTAGCTCAGAGGATGGTGTGAGTTG

ACGCGTACGCGGCCGCTCGAGCAGAACTCATCTCAGAAGAGGATCTGGCAGCAAATGATATCCTGGATT
ACAAGGATGACGACGATAAGGTTTAA



[View online »](#)

Protein Sequence: >MR204566 protein sequence
Red=Cloning site Green=Tags(s)

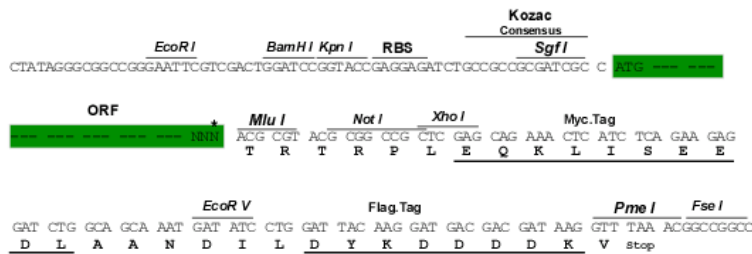
MTFDCRVCDQTLKRAQPPAASCMPPLAEHEPMSPDSDAGCAGNPFTNLLALGKKDGAEKWHLSGSILDVYS
 DEQGISSANAGLTDAPCPSILPMRKEIAETDGRALAKERQKKDNHNLIERRRRYNINRIKELGTLIPKS
 NDPDMRWNKGTILKASVDYIKWLQKEQQRARELEHRQKKLEHANRQLRLRIQELEIQARAHGLPILASLG
 TADVGHITKQQTHPERNLGGCCLQLTPTQGTSPFEYEQAVAFSDPLSHFTDLSFSAALKEEQRLDGMLL
 SDTICPFGTDLLSAISPAVSKASSRSSLSSSEDGDEL

TRTRPLEQKLISEEDLAANDILDYKDDDDKV

Restriction Sites: SgfI-MluI

Cloning Scheme:

Cloning sites used for ORF Shuttling:



ACCN: NM_031198

ORF Size: 954 bp

OTI Disclaimer: The molecular sequence of this clone aligns with the gene accession number as a point of reference only. However, individual transcript sequences of the same gene can differ through naturally occurring variations (e.g. polymorphisms), each with its own valid existence. This clone is substantially in agreement with the reference, but a complete review of all prevailing variants is recommended prior to use. [More info](#)

OTI Annotation: This clone was engineered to express the complete ORF with an expression tag. Expression varies depending on the nature of the gene.

Components: The ORF clone is ion-exchange column purified and shipped in a 2D barcoded Matrix tube containing 10ug of transfection-ready, dried plasmid DNA (reconstitute with 100 ul of water).

Reconstitution Method:

1. Centrifuge at 5,000xg for 5min.
2. Carefully open the tube and add 100ul of sterile water to dissolve the DNA.
3. Close the tube and incubate for 10 minutes at room temperature.
4. Briefly vortex the tube and then do a quick spin (less than 5000xg) to concentrate the liquid at the bottom.
5. Store the suspended plasmid at -20°C. The DNA is stable for at least one year from date of shipping when stored at -20°C.

RefSeq: [NM_031198.3](#), [NP_112475.1](#)

RefSeq Size: 1779 bp

RefSeq ORF: 954 bp

Locus ID: 21426

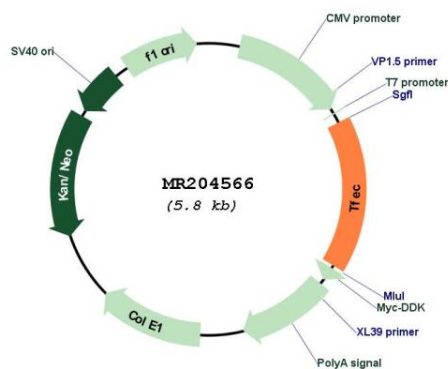
UniProt ID: [Q9WTW4](#)

Cytogenetics: 6 A2

MW: 35.1 kDa

Gene Summary: Transcriptional regulator that acts as a repressor or an activator. Acts as a transcriptional transactivator on the proximal promoter region of the tartrate-resistant acid phosphatase (TRAP) E-box containing promoter. Collaborates with MITF in target gene activation. Acts as a transcriptional repressor on minimal promoter containing element F (that includes an E-box sequence) (By similarity). Binds to element F in an E-box sequence-specific manner (By similarity). Acts as a transcriptional repressor on minimal promoter containing mu E3 enhancer sequence (By similarity). Binds to mu E3 DNA sequence of the immunoglobulin heavy-chain gene enhancer (By similarity). Binds DNA in a homo- or heterodimeric form. [UniProtKB/Swiss-Prot Function]

Product images:



Circular map for MR204566