

Product datasheet for MR204554

Hmg20b (NM_001163165) Mouse Tagged ORF Clone

Product data:

Product Type:	Expression Plasmids
Product Name:	Hmg20b (NM_001163165) Mouse Tagged ORF Clone
Tag:	Myc-DDK
Symbol:	Hmg20b
Synonyms:	AW610687; BRAF35; Hmgx2; Hmgxb2; Smarce1r
Mammalian Cell Selection:	Neomycin
Vector:	pCMV6-Entry (PS100001)
E. coli Selection:	Kanamycin (25 ug/mL)
ORF Nucleotide Sequence:	>MR204554 ORF sequence Red=Cloning site Blue=ORF Green=Tags(s)

TTTTGTAATACGACTCACTATAGGGCGGCCGGAATTCGTCGACTGGATCCGGTACCGAGGAGATCTGCC
GCC**CGATCGCC**

ATGTCCCACGGTCCCGGCAGCCAGGGCGAGCCACCGCACCTGCGGGAGGCAAGACTCCGGGCCAGCACG
GGGCCTTTGTAGTGGCTGTCAAGCAGGAGCGCAGCGAGGGTTCCCGAGCTGGAGAGAAGGGGCCAGGA
GGAGGAGCCAGTGAAGAAGCGAGGCTGGCCAAAGGCAAGAAAAGAAAGAAGATTCTCCAAATGGGCC
AAGGCCCGTCACTGGCTATGTTTCGCTCCTGAATGAGAGCGGGAACAGATTCGCACCCGCCACCCGG
ACCTTCCATTCCCGGAGATCACGAAGATGTTGGCGCCGAGTGGAGCAAGCTGCAGCCGGCAGAGAAGCA
GCGGTACCTGGATGAGGCAGAGAAGGAGAAACAGCAGTACTTGAAGGAGCTGTGGGCATACCAGCAGTCA
GAGGCCTACAAGGTCTGCACTGAGAAGATTCAAGAAAACAAAATTAAGAAAGAGGACTCCAGTTCTGGGC
TCATGAACACCCTCCTGAATGGGCACAAGGGTGTGGACTGCGATGGCTTTTCCACCTTTGATGTGCCAT
CTTCACGGAAGAGTTTCTGGACAAAACAAAGCACGCGAGGCAGAGCTGCGGCGCCTGAGAAAGATGAAC
GTGGCCTTCGAGGAGCAGAATGCGGTGCTGCAGCGCCACACGCAGAGCATGAGCAGCGCGCTGAGCGTC
TGGAGCAGGAGTTGGCGCTGGAGGAGCGGCGCACACTGGCATTGCAGCAGCAACTACAGGCCGTGAGGCA
GGCGCTCACCGCTAGCTTCGCTCCCTGCCGGTGCCCGGCACCGGGGAGACACCGACCCTCGGGACGCTG
GACTTTTACATGGCGCGGCTTCATGGAGCCATCGAGCGGACCCCGCGCAGCAGAGACTGATCGCGC
CGCTCAAGGAGATCCTGGCGCGGTAGCCAGCGAGCACCTG

ACGCGTACGCGGCCGCTCGAGCAGAAACTCATCTCAGAAGAGGATCTGGCAGCAAATGATATCCTGGATT
ACAAGGATGACGACGATAAGGTTTAA



[View online »](#)

Protein Sequence: >MR204554 protein sequence
 Red=Cloning site Green=Tags(s)

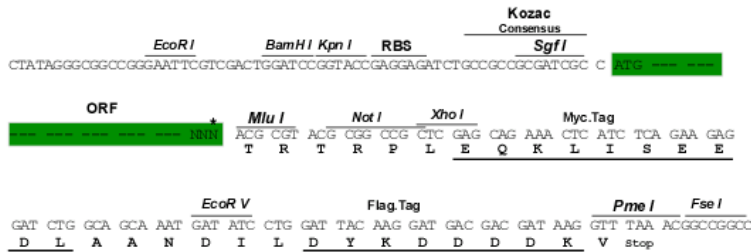
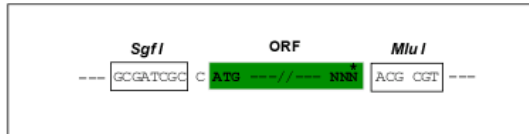
MSHGPRQPGAATAPAGGKTPGQHGFVAVKQERSEGSRAGEKGPQEEEPVKKRGWPKGKKRKKILPNGP
 KAPVTGYVRFLNERREQIRTRHPDLPFPEITKMLGAWSKLQPAEKQRYLDEAEKEKQYLLKELWAYQQS
 EAYKVCTEKIQENKIKKEDSSSGLMNTLLNGHKGVDCDGFSTFDVPIFTEEFLDQNKAREELRRLKMN
 VAFEEQNAVLQRHTQSMSSARERLEQELALEERTLALQQQLQAVRQAL TASFASLPVPGTGETPTLGT
 DFYMARLHGAIERDPAQHERLIARVKEILARVASEHL

TRTRPLEQKLISEEDLAANDILDYKDDDDKV

Restriction Sites: SgfI-MluI

Cloning Scheme:

Cloning sites used for ORF Shuttling:



* The last codon before the Stop codon of the ORF

ACCN: NM_001163165

ORF Size: 954 bp

OTI Disclaimer: The molecular sequence of this clone aligns with the gene accession number as a point of reference only. However, individual transcript sequences of the same gene can differ through naturally occurring variations (e.g. polymorphisms), each with its own valid existence. This clone is substantially in agreement with the reference, but a complete review of all prevailing variants is recommended prior to use. [More info](#)

OTI Annotation: This clone was engineered to express the complete ORF with an expression tag. Expression varies depending on the nature of the gene.

Components: The ORF clone is ion-exchange column purified and shipped in a 2D barcoded Matrix tube containing 10ug of transfection-ready, dried plasmid DNA (reconstitute with 100 ul of water).

Reconstitution Method:

1. Centrifuge at 5,000xg for 5min.
2. Carefully open the tube and add 100ul of sterile water to dissolve the DNA.
3. Close the tube and incubate for 10 minutes at room temperature.
4. Briefly vortex the tube and then do a quick spin (less than 5000xg) to concentrate the liquid at the bottom.
5. Store the suspended plasmid at -20°C. The DNA is stable for at least one year from date of shipping when stored at -20°C.

RefSeq: [NM_001163165.1](#), [NP_001156637.1](#)

RefSeq Size: 1560 bp

RefSeq ORF: 954 bp

Locus ID: 15353

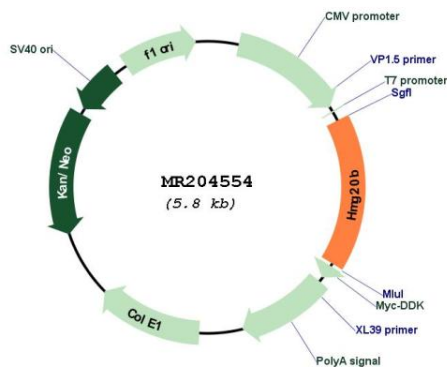
UniProt ID: [Q9Z104](#)

Cytogenetics: 10 39.72 cM

MW: 35.9 kDa

Gene Summary: Required for correct progression through G2 phase of the cell cycle and entry into mitosis. Required for RCOR1/CoREST mediated repression of neuronal specific gene promoters (By similarity).[UniProtKB/Swiss-Prot Function]

Product images:



Circular map for MR204554