

## Product datasheet for MR204553

### Faim2 (NM\_028224) Mouse Tagged ORF Clone

#### Product data:

Product Type:	Expression Plasmids
Product Name:	Faim2 (NM_028224) Mouse Tagged ORF Clone
Tag:	Myc-DDK
Symbol:	Faim2
Synonyms:	2900002L20Rik; Lfg; Lfg2; NMP25; Nmp35; Tmbim2
Mammalian Cell Selection:	Neomycin
Vector:	pCMV6-Entry (PS100001)
E. coli Selection:	Kanamycin (25 ug/mL)
ORF Nucleotide Sequence:	>MR204553 ORF sequence Red=Cloning site Blue=ORF Green=Tags(s)

TTTTGTAATACGACTCACTATAGGGCGGCCGGAATTCGTCGACTGGATCCGGTACCGAGGAGATCTGCC  
GCC**CGATCGCC**

ATGACCCAGGGAAAGCTCTCTGTGGCTAACAAGGCCCGGGACTGAGGGGCAGCAGCACCAGGCAAATG  
GAGAGAAGAAGGATGCTCCGGCAGTGCCCTCGGCACCCTCCTATGAGGAGGCCACCTCTGGAGAGGG  
GCTGAAGGCAGGGACCTCCCCAGGGCCAACAGCTGTGCCACTCCATCAAGCTGGGCTACGTGGAC  
CCCAGCGCAGCTCCGGCTATGAAGGTGGTTTCCCGCAGGACATCACGAGCATTTACCACCTTCAGT  
GGGATGACCAGAAAGTTCGTCGGCTCTTCATCAGAAAGGTCTATACCATCCTATTGGTCCAGCTGCTGGT  
GACCTTGCTGTGGTGGCTCTTTACCTTCTGTGATGTCGTTAAGGACTATGTCAGGCTAACCCCGGC  
TGGTACTGGGCGTCTATGCCGTGTTCTTTGCAACTTACCTGACTCTGGCTTGCTGTTCTGGACCCAGGA  
GACATTTCCCTTGAACCTGATTCTGCTGACCATCTTTACCCTGTCCATGGCCTACCTCACTGGGATGCT  
GTCCAGTTACTACAACACCACATCTGTGCTGCTGTGCCTGGTCATCACGGCTCTCGTCTGCCTCTCGGT  
ACCATCTTCAAGTTCCAGACCAAGTTTGACTTCACCTCCTGTCCAGGCTGTGCTGTTTGTGCTGCTCATGA  
CCCTCTTCTTCAAGTGGACTCCTCCTCGTGTCCCTGCCCTTCAATACGTCCCTGGCTCCACGCGGT  
CTATGCTGACTGGGAGCGGGTGTGTTACGTTGTTCTGGCCTTGATACCCAGTTGCTGATGGGTAAC  
CGTCGACACTCGCTGAGCCCCGAGGAGTATATTTTGGAGCCCTCAACATCTACTTAGACATTATCTATA  
TCTTACCTTCTCCTGCAGCTTTTTGGCACCAACCGGGAA

**ACGCGT**ACGCGGCCGCTCGAGCAGAAACTCATCTCAGAAGAGGATCTGGCAGCAAATGATATCCTGGATT  
ACAAGGATGACGACGATAAGGTTTAA



[View online »](#)

**Protein Sequence:** >MR204553 protein sequence  
Red=Cloning site Green=Tags(s)

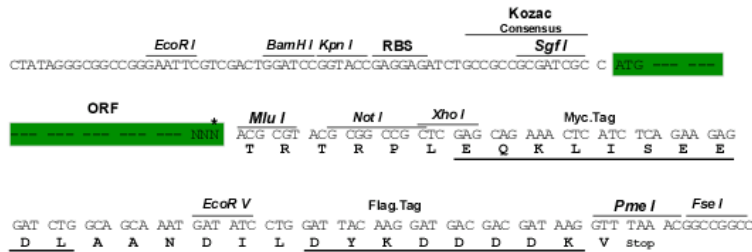
MTQGKLSVANKAPGTEGQQHQANGEKKDAPVPSAPPSYEEATSGEGLKAGTFPQGPTAVPLHPSWAYVD  
 PSGSSGYEGGFPAGHHEHFTTFSWDDQKVRRLFIRKVYITILLVQLLVTLAVVALFTFCDVVKDYVQANPG  
 WYWASYAVFFATYLTACCSPRRRHFPNLILLTIFTLSMAYLTGMLSSYNTTSLVLLCLVITALVCLSV  
 TIFSFQTKFDFTSCQGVLFVLLMTLFFSGLLLAVLLPFQYVPWLHAVYAVLGAGVFTLFLAFDTQLLMGN  
 RRHLSPEEYIFGALNIYLDIIYIFTFFLQLFGTNRE

TRTRPLEQKLISEEDLAANDILDYKDDDDKV

**Restriction Sites:** SgfI-MluI

**Cloning Scheme:**

Cloning sites used for ORF Shuttling:



\* The last codon before the Stop codon of the ORF

**ACCN:** NM\_028224

**ORF Size:** 954 bp

**OTI Disclaimer:** The molecular sequence of this clone aligns with the gene accession number as a point of reference only. However, individual transcript sequences of the same gene can differ through naturally occurring variations (e.g. polymorphisms), each with its own valid existence. This clone is substantially in agreement with the reference, but a complete review of all prevailing variants is recommended prior to use. [More info](#)

**OTI Annotation:** This clone was engineered to express the complete ORF with an expression tag. Expression varies depending on the nature of the gene.

**Components:** The ORF clone is ion-exchange column purified and shipped in a 2D barcoded Matrix tube containing 10ug of transfection-ready, dried plasmid DNA (reconstitute with 100 ul of water).

**Reconstitution Method:**

1. Centrifuge at 5,000xg for 5min.
2. Carefully open the tube and add 100ul of sterile water to dissolve the DNA.
3. Close the tube and incubate for 10 minutes at room temperature.
4. Briefly vortex the tube and then do a quick spin (less than 5000xg) to concentrate the liquid at the bottom.
5. Store the suspended plasmid at -20°C. The DNA is stable for at least one year from date of shipping when stored at -20°C.

**RefSeq:** [NM\\_028224.4](#), [NP\\_082500.2](#)

**RefSeq Size:** 4668 bp

**RefSeq ORF:** 954 bp

**Locus ID:** 72393

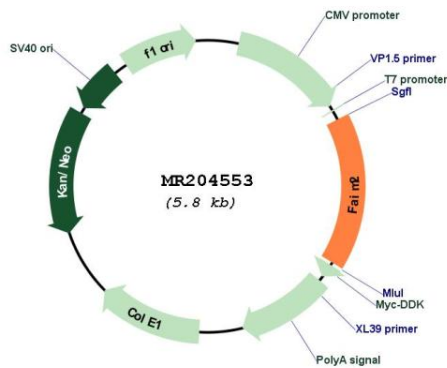
**UniProt ID:** [Q8K097](#)

**Cytogenetics:** 15 F1

**MW:** 35.3 kDa

**Gene Summary:** Antiapoptotic protein which protects cells uniquely from Fas-induced apoptosis. Regulates Fas-mediated apoptosis in neurons by interfering with caspase-8 activation. Plays a role in cerebellar development by affecting cerebellar size, internal granular layer (IGL) thickness, and Purkinje cell (PC) development.[UniProtKB/Swiss-Prot Function]

### Product images:



Circular map for MR204553