

Product datasheet for MR204550

Eef1g (BC023495) Mouse Tagged ORF Clone

Product data:

Product Type:	Expression Plasmids
Product Name:	Eef1g (BC023495) Mouse Tagged ORF Clone
Tag:	Myc-DDK
Symbol:	Eef1g
Synonyms:	2610301D06Rik; AA407312; EF1G
Mammalian Cell Selection:	Neomycin
Vector:	pCMV6-Entry (PS100001)
E. coli Selection:	Kanamycin (25 ug/mL)
ORF Nucleotide Sequence:	>MR204550 ORF sequence Red=Cloning site Blue=ORF Green=Tags(s)

TTTTGTAATACGACTCACTATAGGGCGGCCGGAATTCGTCGACTGGATCCGGTACCGAGGAGATCTGCC
GCC**CGATCGCC**

ATGCACCACAACAACAGGCCACTGAAAATGCGAAAGAGGAGGTGAAGCGAATCCTGGGGCTGCTGGACA
CTCACTTGAAGACTCGAACTTTTCTAGTGGCGGAGCGAGTGACTGGCTGATATTACAGTTGTCTGTAC
CCTGTTGGCTCTATAAACAGGCTTAGAGCCTTCTTTTCGCCAGGCCCTCCCAATACCAACCGGTGG
TTCCTTACCTGCATTAACCAGCCCCAGTTCAGGGCTATCTTGGGGAGGTGAAGCTGTGTGAGAAGATGG
CTCAGTTTGATGCTAAGAAGTTTGCAGAGAGCCAGCCTAAAAAAGATACCCAAGGAAAGAAAAGGGTTC
ACGAGAGGAGAAAACAGAAACCCAGGCTGAGCGGAAGGAGGAAAAAAGGCAGCTGCCCCAGCTCCCTGAG
GAAGAGATGGATGAGTGTGAGCAGGCATTGGCTGCTGAGCCCAAGGCCAAGGACCCTTTCGCTCACCTGC
CCAAGAGTACCTTTGTGTTGGATGAGTTTAAGCGTAAGTACTCCAATGAGGACACCCTCTCTGTGGCACT
GCCATATTTTTGGGAGCACTTTGATAAAGATGGCTGGTCCCTGTGGTATGCCGAGTACCGCTTCCCTGAA
GAGCTGACCCAGACCTTCATGAGTTGCAACCTCATCACTGGGATGTTTCAGCGATTGGACAACTGAGGA
AGAATGCCTTTGCTAGTGTATCCTCTTTGGAACCAACAACAGCAGCTCCATTTCTGGTGTGGTCTT
CCGAGGCCAAGAGCTTGCCTTTCCGCTGAGTCCAGATTGGCAGGTGGACTATGAGTCGTATACATGGCGG
AAACTGGATCCTGGGAGCGAGGAAACCCAGACCCTGGTTCGAGAGTACTTTTCTGGGAGGGGACCTTCC
AGCATGTGGGCAAAGCCGTCAATCAAGCAAGATCTTCAAG

ACGCGTACGCGGCCGCTCGAGCAGAAACTCATCTCAGAAGAGGATCTGGCAGCAATGATATCCTGGATT
ACAAGGATGACGACGATAAGGTTTAA



[View online »](#)

Protein Sequence: >MR204550 protein sequence
Red=Cloning site Green=Tags(s)

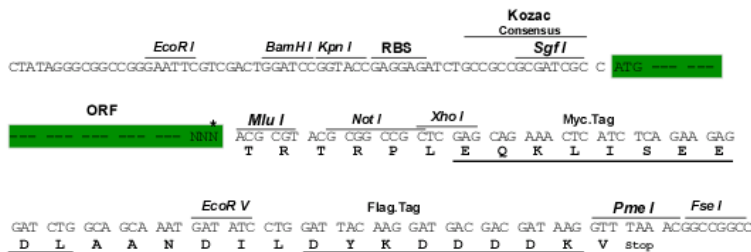
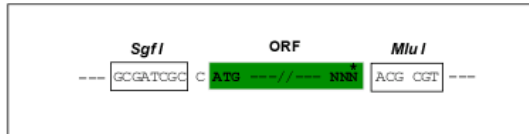
MHHNKQATENAKEEVKRI LGLLDTHLKRTRFLVGERVTLADITVVCTLLWLYKQVLEPSFRQAFPNTNRW
 FLTCINQPQFRAILGEVKLCEKMAQFDKAKFAESQPKKDTPRKEKGSREEKQKPQAEKKEEKAAAPAPE
 EEMDECEQALAAEPKAKDPFAHLPKSTFVLDDEFKRKYSNEDTLSVALPYFWEHFDKDGWLSLWYAEYRFPE
 ELTQTTFMSCNLIITGMFQRLDKLRKNFAFVILFGTNNSSISGVWVFRGQELAFPLSPDWQVDYESYTW
 KLDPGSEETQTLVREYFSWEGTFQHVGVKAVNQGIKFK

TRTRPLEQKLISEEDLAANDILDYKDDDDKV

Restriction Sites: SgfI-MluI

Cloning Scheme:

Cloning sites used for ORF Shuttling:



* The last codon before the Stop codon of the ORF

ACCN: BC023495

ORF Size: 951 bp

OTI Disclaimer: The molecular sequence of this clone aligns with the gene accession number as a point of reference only. However, individual transcript sequences of the same gene can differ through naturally occurring variations (e.g. polymorphisms), each with its own valid existence. This clone is substantially in agreement with the reference, but a complete review of all prevailing variants is recommended prior to use. [More info](#)

OTI Annotation: This clone was engineered to express the complete ORF with an expression tag. Expression varies depending on the nature of the gene.

Components: The ORF clone is ion-exchange column purified and shipped in a 2D barcoded Matrix tube containing 10ug of transfection-ready, dried plasmid DNA (reconstitute with 100 ul of water).

Reconstitution Method:

1. Centrifuge at 5,000xg for 5min.
2. Carefully open the tube and add 100ul of sterile water to dissolve the DNA.
3. Close the tube and incubate for 10 minutes at room temperature.
4. Briefly vortex the tube and then do a quick spin (less than 5000xg) to concentrate the liquid at the bottom.
5. Store the suspended plasmid at -20°C. The DNA is stable for at least one year from date of shipping when stored at -20°C.

RefSeq: [BC023495](#), [AAH23495](#)

RefSeq Size: 1391 bp

RefSeq ORF: 953 bp

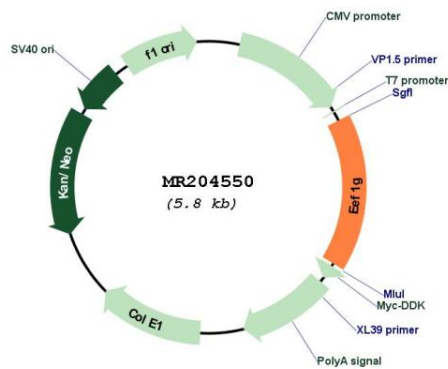
Locus ID: 67160

Cytogenetics: 19 A

MW: 36.9 kDa

Gene Summary: Probably plays a role in anchoring the complex to other cellular components.
[UniProtKB/Swiss-Prot Function]

Product images:



Circular map for MR204550