

## Product datasheet for MR204545

### Sucnr1 (NM\_032400) Mouse Tagged ORF Clone

#### Product data:

Product Type: Expression Plasmids  
 Product Name: Sucnr1 (NM\_032400) Mouse Tagged ORF Clone  
 Tag: Myc-DDK  
 Symbol: Sucnr1  
 Synonyms: Gpr91  
 Mammalian Cell Selection: Neomycin  
 Vector: pCMV6-Entry (PS100001)  
 E. coli Selection: Kanamycin (25 ug/mL)  
 ORF Nucleotide Sequence: >MR204545 representing NM\_032400  
 Red=Cloning site Blue=ORF Green=Tags(s)

TTTTGTAATACGACTCACTATAGGGCGGCCGGAATTCGTCGACTGGATCCGGTACCGAGGAGATCTGCC  
 GCC**CGATCGCC**

ATGGCACAGAATTTATCTTGTGAGAATTGGTTGGCAACAGAGGCTATCTTGAATAAGTACTACCTCTCTG  
 CATTTTATGCAATCGAGTTCATTTTGGACTGCTTGGGAATGTCAGTGTGGTGTTCGGCTACCTCTTCTG  
 CATGAAGAAGTGGAAACAGCAGCAATGTCTATCTTTTAACTTTCCATCTCTGACTTTGCTTTCCTGTGC  
 ACCCTTCCATCCTGATAAAGAGTTATGCCAATGATAAGGGGACCTATGGAGATGTTCTCTGTATAAGCA  
 ACCGATATGTGCTTACACCAACCTCTACACCAGCATCCTTCTCCTCACTTTCATTAGCATGGACCGATA  
 TCTGCTCATGAAGTACCCTTTCGAGAACAATTTCTACAAAAGAAGGAATTTGCCATTTAATCTCGCTG  
 GCTGTCTGGGCCTTAGTGACCTTAGAAGTTCTACCCATGCTCACTTTCATCAATTCGTGCCAAAAGAAG  
 AGGGCAGTAACTGCATCGACTATGCAAGTTCTGGAAACCTGAACACAATCTCATTTACAGCCTCTGCCT  
 GACTTTGTTGGGCTTCCTAATTCCTCTCTCTGTGATGTGCTTCTTCTACTACAAGATGGTAGTCTTCTTA  
 AAGAGGAGGAGCCAGCAGCAAGCAACTGCCCTGCCACTGGACAAACCCCAACGCCTGGTGGTCTGGCGG  
 TTGTGATCTTCTATACTCTTACACCCTATCATATCATGCGCAATTTGAGGATCGCCTCACGCCTGGA  
 TAGTTGGCCACAAGGATGTACACAGAAGGCCATCAAATCTATATACACTGACACGGCCTCTGGCCTTT  
 CTGAACAGTGCCATCAATCCCATCTTCTACTTCCATGGGAGACCATTACAGAGAGATGCTGATTAGTA  
 AGTTCAGACAATACTTCAAGTCCCTTACATCCTTCAGGACA

**ACGCGT**ACGCGGCCGCTCGAGCAGAAACTCATCTCAGAAGAGGATCTGGCAGCAAATGATATCCTGGATT  
 ACAAGGATGACGACGATAAGGTTTAA



[View online »](#)

**Protein Sequence:** >MR204545 representing NM\_032400  
 Red=Cloning site Green=Tags(s)

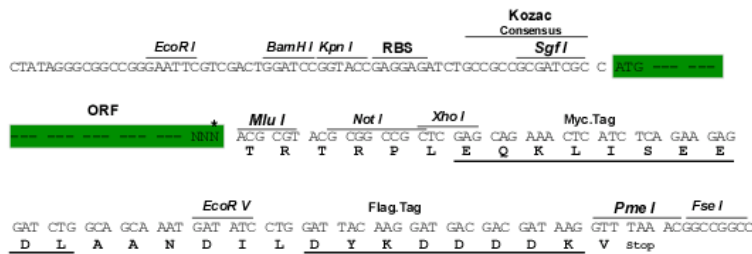
MAQNLSCENWLATEAILNKYYLSAFYAIEFIFGLLGNTVVFGYLFCKMKNWSSNVYLFNLSISDFAFLC  
 TLPILIKSYANDKGTGVDVLCISNRYVLHTNLYTSILFLTFISMDRYLLMKYPFREHFLQKKEFAILISL  
 AVWALVTLEVLPLMTFINSVPKEEGSNCIDYASSGNPEHNLIYSLCLTLLGFLIPLSVMCFYYKMVVFL  
 KRRSQQQATALPLDKPQRLVVLAVVIFSLFPTYHIMRNLRIASRLDSWPQGCTQKAIKSIYTLTRPLAF  
 LNSAINPIFYFLMGDHYREMLISKFRQYFKSLTSFRT

TRTRPLEQKLISEEDLAANDILDYKDDDDKV

**Restriction Sites:** SgfI-MluI

**Cloning Scheme:**

Cloning sites used for ORF Shuttling:



\* The last codon before the Stop codon of the ORF

**ACCN:** NM\_032400

**ORF Size:** 951 bp

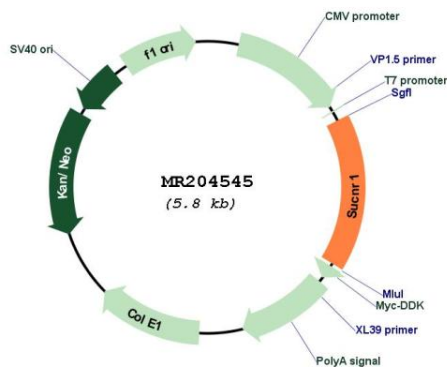
**OTI Disclaimer:** Due to the inherent nature of this plasmid, standard methods to replicate additional amounts of DNA in E. coli are highly likely to result in mutations and/or rearrangements. Therefore, OriGene does not guarantee the capability to replicate this plasmid DNA. Additional amounts of DNA can be purchased from OriGene with batch-specific, full-sequence verification at a reduced cost. Please contact our customer care team at [custsupport@origene.com](mailto:custsupport@origene.com) or by calling 301.340.3188 option 3 for pricing and delivery.

The molecular sequence of this clone aligns with the gene accession number as a point of reference only. However, individual transcript sequences of the same gene can differ through naturally occurring variations (e.g. polymorphisms), each with its own valid existence. This clone is substantially in agreement with the reference, but a complete review of all prevailing variants is recommended prior to use. [More info](#)

**OTI Annotation:** This clone was engineered to express the complete ORF with an expression tag. Expression varies depending on the nature of the gene.

<b>Components:</b>	The ORF clone is ion-exchange column purified and shipped in a 2D barcoded Matrix tube containing 10ug of transfection-ready, dried plasmid DNA (reconstitute with 100 ul of water).
<b>Reconstitution Method:</b>	<ol style="list-style-type: none"> <li>1. Centrifuge at 5,000xg for 5min.</li> <li>2. Carefully open the tube and add 100ul of sterile water to dissolve the DNA.</li> <li>3. Close the tube and incubate for 10 minutes at room temperature.</li> <li>4. Briefly vortex the tube and then do a quick spin (less than 5000xg) to concentrate the liquid at the bottom.</li> <li>5. Store the suspended plasmid at -20°C. The DNA is stable for at least one year from date of shipping when stored at -20°C.</li> </ol>
<b>RefSeq:</b>	<u>NM_032400.1, NM_032400.2, NP_115776.1, NP_115776.2</u>
<b>RefSeq Size:</b>	1598 bp
<b>RefSeq ORF:</b>	954 bp
<b>Locus ID:</b>	84112
<b>UniProt ID:</b>	<u>Q99MT6</u>
<b>Cytogenetics:</b>	3 D
<b>MW:</b>	37.2 kDa
<b>Gene Summary:</b>	Receptor for succinate.[UniProtKB/Swiss-Prot Function]

**Product images:**



Circular map for MR204545