

## Product datasheet for MR204542

### Akr1b8 (NM\_008012) Mouse Tagged ORF Clone

#### Product data:

Product Type:	Expression Plasmids
Product Name:	Akr1b8 (NM_008012) Mouse Tagged ORF Clone
Tag:	Myc-DDK
Symbol:	Akr1b8
Synonyms:	Fgfrp; Fgrp; FR-1
Mammalian Cell Selection:	Neomycin
Vector:	pCMV6-Entry (PS100001)
E. coli Selection:	Kanamycin (25 ug/mL)
ORF Nucleotide Sequence:	>MR204542 ORF sequence Red=Cloning site Blue=ORF Green=Tags(s)

TTTTGTAATACGACTCACTATAGGGCGGCCGGAATTCGTCGACTGGATCCGGTACCGAGGAGATCTGCC  
GCC**CGATCGCC**

ATGGCCACGTTTCGTGGAACCTCAGTACCAAAGCCAAGATGCCATTGTGGGCCTGGGCACCTGGAAGTCTC  
CCCCAAACCAAGTCAAAGAAGCTGTGAAGGCGGCCATTGACGCTGGGTATCGCCATATCGACTGCGCGTA  
TGCTATTGCAACGAGAATGAGGTGGGAGAAGCCATCCAAGAGAAGATCAAAGAGAAGGCTGTGCAGCGG  
GAGGACCTCTTCATTGTGACGAAGCTGTGGCCACCTGCTTTGAGAAGAACTGCTAAAGGAAGCCTTTT  
AGAAGACCCTCACGGATCTGAAGCTGGACTATTTGGACCTCTATCTTATTCACTGGCCACAGGGACTTCA  
GCCAGGAAAGGAGTTATTCCTCCAAAGATGACCAAGGCAGAATCCTCACCAGTAAGACAACATTCTTGAA  
GCCTGGGAGGGCATGGAGGAACTGGTGGACCAGGGCTGGTAAAAGCTCTGGGCGTCTCCAACCTCAACC  
ACTTCCAGATTGAAAGGCTCCTGAACAAGCCTGGACTAAAACATAAGCCAGTGACCAACCAGGTTGAGTG  
TCATCCTTACCTCACCCAGGAAAACTGATCCAGTACTGTCACTCGAAGGGCATCTGTCACTGCCTAC  
AGTCCCCTGGGCTCCCCAGACAGGCCTAGCGCCAAGCCAGAGGACCCTTCACTATTAGAGGACCCAAAA  
TTAAAGAGATTGCCGCCAAGCACAAGAAAACCTCAGCCCAGGTTCTGATTTCGTTTACATCCAGAGGAA  
CGTGGTGGTATCCCGAAGTCTGTGACGCCATCACGTATACAGGAGAACATTCAGGTCTTTGATTCCAG  
TTGAGTGACGAGGAGATGGCCACTATCCTTAGCTTCAACAGAAAACCTGGAGGGCTGCCTGCTGCCTGAGA  
CAGTAAACATGGAAGAATATCCCTATGATGCAGAATAC

**ACGCGT**ACGCGGCCGCTCGAGCAGAAAACCTCATCTCAGAAGAGGATCTGGCAGCAAATGATATCCTGGATT  
ACAAGGATGACGACGATAAGGTTTAA



[View online »](#)

**Protein Sequence:** >MR204542 protein sequence  
Red=Cloning site Green=Tags(s)

MATFVELSTKAKMPIVGLGTWKSPPNQVKEAVKAAIDAGYRHIDCAYAYCNENEVGEAIQEKIKEKAVQR  
 EDLFIVSKLWPTCFEKLLKEAFQKTLTDLKLDYLDLYL IHW PQL QPGKEL FPKDDQGRILTSKTTFLE  
 AWEGMEELVDQGLVKALGVSNFNHFQIERLLNKPGLKHKPVTNQVECHPYLTQEKL IQYCHSKGISVTAY  
 SPLGSPDRPSAKPEDPSLLEDPKIKEIAAKHKK TSAQV LIRFHIQRNVVVIPKSVTPSRIQENIQVDFDQ  
 LSDEEMATILSFNRNWRACLLPETVNMEEYPYDAEY

TRTRPLEQKLISEEDLAANDILDYKDDDDKV

**Restriction Sites:** SgfI-MluI

**Cloning Scheme:**

Cloning sites used for ORF Shuttling:



\* The last codon before the Stop codon of the ORF

**ACCN:** NM\_008012

**ORF Size:** 948 bp

**OTI Disclaimer:** The molecular sequence of this clone aligns with the gene accession number as a point of reference only. However, individual transcript sequences of the same gene can differ through naturally occurring variations (e.g. polymorphisms), each with its own valid existence. This clone is substantially in agreement with the reference, but a complete review of all prevailing variants is recommended prior to use. [More info](#)

**OTI Annotation:** This clone was engineered to express the complete ORF with an expression tag. Expression varies depending on the nature of the gene.

**Components:** The ORF clone is ion-exchange column purified and shipped in a 2D barcoded Matrix tube containing 10ug of transfection-ready, dried plasmid DNA (reconstitute with 100 ul of water).

**Reconstitution Method:**

1. Centrifuge at 5,000xg for 5min.
2. Carefully open the tube and add 100ul of sterile water to dissolve the DNA.
3. Close the tube and incubate for 10 minutes at room temperature.
4. Briefly vortex the tube and then do a quick spin (less than 5000xg) to concentrate the liquid at the bottom.
5. Store the suspended plasmid at -20°C. The DNA is stable for at least one year from date of shipping when stored at -20°C.

**Note:** Plasmids are not sterile. For experiments where strict sterility is required, filtration with 0.22um filter is required.

**RefSeq:** [NM\\_008012.1](#), [NP\\_032038.1](#)

**RefSeq Size:** 1304 bp

**RefSeq ORF:** 951 bp

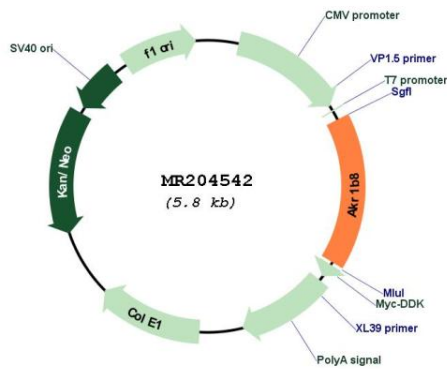
**Locus ID:** 14187

**UniProt ID:** [P45377](#)

**Cytogenetics:** 6 14.91 cM

**MW:** 36.1 kDa

**Product images:**



Circular map for MR204542