

Product datasheet for MR204538

Akr1b10 (NM_172398) Mouse Tagged ORF Clone

Product data:

Product Type:	Expression Plasmids
Product Name:	Akr1b10 (NM_172398) Mouse Tagged ORF Clone
Tag:	Myc-DDK
Symbol:	Akr1b10
Synonyms:	2310005E10Rik; Akr1b16
Mammalian Cell Selection:	Neomycin
Vector:	pCMV6-Entry (PS100001)
E. coli Selection:	Kanamycin (25 ug/mL)
ORF Nucleotide Sequence:	>MR204538 ORF sequence Red=Cloning site Blue=ORF Green=Tags(s)

TTTTGTAATACGACTCACTATAGGGCGGCCGGAATTCGTCGACTGGATCCGGTACCGAGGAGATCTGCC
GCC**CGATCGCC**

ATGGCCGCCTTCGTGACGCTCCTACCGGAGCCAAGATGCCATTGTGGGCCTGGGCACCTGGAAGTCTC
CCCCAGCTAAAGTCAGGGAAGCTGTGAAGGTGGCCATTGATGCTGGGTATCGCCACATTGATTGTGCCTA
TGTCTATCAGAAATGAGAGCGAGGTGGGAGAAGCCATCCAAGAGAAGATCCAGGAGAAGGCTGTGAAGCGG
GAGGACCTTTCATCGTCAGCAAGCTGTGGTCCACCTTCTTTGAGAAAAGCCTGGTGAAGAAAGCCTTCC
AGAACACCCTCTCGGATCTGAAGCTTGACTACCTGGACCTGTATCTAATCCACTGGCCACAGGGATTCA
GTCTGGAAATGTCTTTTTACCCACAGATGATAAAGGCAGTATTCTCAGCAGTAAATATACGTTCTTGAT
GCTTGGGAGGCCATGGAGGAAGTGGTGGACCAGGGACTGGTAAAAGCTCTGGGTGTCTCCAACCTCAACC
ACTTCCAGATTGAAAGGCTCCTGAACAAGCCTGGACTGAAACATAAGCCAGTGACCAACCAGGTTGAGTG
TCACCCCTACCTACCCAGGAAAACTGACCCAGTACTGTCACTCCAAGGGCATCACCATCACAGCCTAC
AGTCCCCTGGGCTCCCCAGACAGGCCTAGTGCCAAACCAGAGGACCCCTATTACTGGAGATTCCAAGA
TCAAAGAGATTGCTGCAAAGCACAAGAAGACTGCAGCACAGGTTCTGATTTCGTTCCATATAGAGAGGAA
CGTGGTGGTATCCCCAAGTCTGTGACACCTTCTCGAATACAGGAGAACATTCAGGTCTTCGACTCCAG
TTAAGTGAGGAGACATGGCCGCCATTCTCAGTTCAACAGGAAGTGGAGGGCCTGTGGCCTGTTTGCAG
CAAGTCATAACGAGGACTTCCCTTTCATGCGGAATAC

ACGCGTACGCGGCCGCTCGAGCAGAAACTCATCTCAGAAGAGGATCTGGCAGCAAATGATATCCTGGATT
ACAAGGATGACGACGATAAGGTTTAA



[View online »](#)

Protein Sequence: >MR204538 protein sequence
Red=Cloning site Green=Tags(s)

MAAFVLLLTGAKMPIVGLGTWKSPPAKVREAVKVAIDAGYRHIDCAYVYQNESEVGEAIQEKIQEKAVKR
 EDLFIIVSKLWSTFFEKSLVKKAFQNTLSCLKLDYLDLYLIHWPQGFQSGNVFLPTDDKGSILSSKYTFLD
 AWEAMEELVDQGLVKALGVSNNHFQIERLLNPKPLKHKPVTNQVECHPYLTQEKLTQYCHSKGITITAY
 SPLGSPDRPSAKPEDPLLEIPKIKEIAAKHKKTAQVLIIRFHIERNVVVIPKSVTPSRIQENIQVDFDQ
 LSEEDMAAILSFNRRNWRACGLFAASHNEDFPFHAEY

TRTRPLEQKLISEEDLAANDILDYKDDDDKV

Restriction Sites: SgfI-MluI

Cloning Scheme:

Cloning sites used for ORF Shuttling:



ACCN: NM_172398

ORF Size: 951 bp

OTI Disclaimer: The molecular sequence of this clone aligns with the gene accession number as a point of reference only. However, individual transcript sequences of the same gene can differ through naturally occurring variations (e.g. polymorphisms), each with its own valid existence. This clone is substantially in agreement with the reference, but a complete review of all prevailing variants is recommended prior to use. [More info](#)

OTI Annotation: This clone was engineered to express the complete ORF with an expression tag. Expression varies depending on the nature of the gene.

Components: The ORF clone is ion-exchange column purified and shipped in a 2D barcoded Matrix tube containing 10ug of transfection-ready, dried plasmid DNA (reconstitute with 100 ul of water).

Reconstitution Method:

1. Centrifuge at 5,000xg for 5min.
2. Carefully open the tube and add 100ul of sterile water to dissolve the DNA.
3. Close the tube and incubate for 10 minutes at room temperature.
4. Briefly vortex the tube and then do a quick spin (less than 5000xg) to concentrate the liquid at the bottom.
5. Store the suspended plasmid at -20°C. The DNA is stable for at least one year from date of shipping when stored at -20°C.

RefSeq: [NM_172398.2](#)

RefSeq Size: 1341 bp

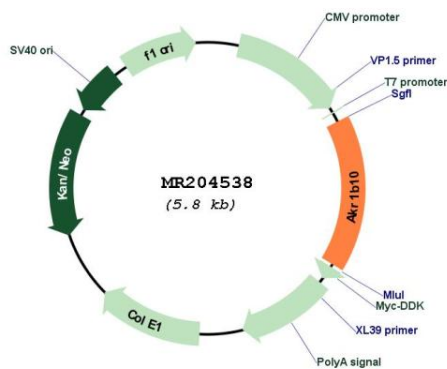
RefSeq ORF: 951 bp

Locus ID: 67861

Cytogenetics: 6 B1

MW: 35.8 kDa

Product images:



Circular map for MR204538