

Product datasheet for MR204533L2

Cd276 (NM_133983) Mouse Tagged Lenti ORF Clone

Product data:

Product Type:	Expression Plasmids
Product Name:	Cd276 (NM_133983) Mouse Tagged Lenti ORF Clone
Tag:	mGFP
Symbol:	Cd276
Synonyms:	6030411F23Rik; AU016588; B7h3; B7RP-2
Mammalian Cell Selection:	None
Vector:	pLenti-C-mGFP (PS100071)
E. coli Selection:	Chloramphenicol (34 ug/mL)
ORF Nucleotide Sequence:	The ORF insert of this clone is exactly the same as(MR204533).
Restriction Sites:	SgfI-MluI
Cloning Scheme:	

Cloning sites used for ORF Shuttling:



* The last codon before the Stop codon of the ORF.

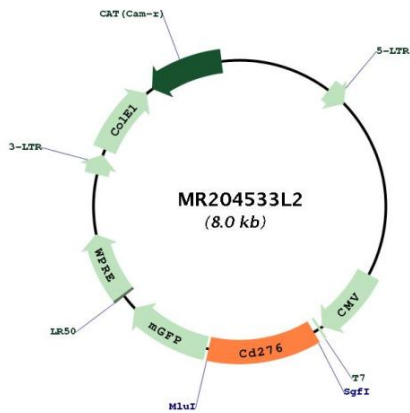
ACCN:	NM_133983
ORF Size:	951 bp



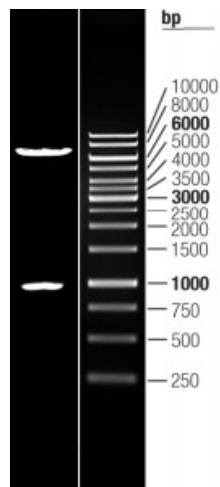
[View online »](#)

OTI Disclaimer:	The molecular sequence of this clone aligns with the gene accession number as a point of reference only. However, individual transcript sequences of the same gene can differ through naturally occurring variations (e.g. polymorphisms), each with its own valid existence. This clone is substantially in agreement with the reference, but a complete review of all prevailing variants is recommended prior to use. More info
OTI Annotation:	This clone was engineered to express the complete ORF with an expression tag. Expression varies depending on the nature of the gene.
Components:	The ORF clone is ion-exchange column purified and shipped in a 2D barcoded Matrix tube containing 10ug of transfection-ready, dried plasmid DNA (reconstitute with 100 ul of water).
Reconstitution Method:	<ol style="list-style-type: none">1. Centrifuge at 5,000xg for 5min.2. Carefully open the tube and add 100ul of sterile water to dissolve the DNA.3. Close the tube and incubate for 10 minutes at room temperature.4. Briefly vortex the tube and then do a quick spin (less than 5000xg) to concentrate the liquid at the bottom.5. Store the suspended plasmid at -20°C. The DNA is stable for at least one year from date of shipping when stored at -20°C.
RefSeq:	NM_133983.2
RefSeq Size:	3197 bp
RefSeq ORF:	951 bp
Locus ID:	102657
UniProt ID:	Q8VE98
Cytogenetics:	9 B
Gene Summary:	Modulates T-cell-mediated immune responses and the development of acute and chronic transplant rejection. Plays a positive regulatory role in bone formation and has a dual role in the bone-immune interface. Induces antitumor immunity as it activates both acquired and innate immunity leading to natural killer cell and CD8 T-cell dependent killing of tumor cells. [UniProtKB/Swiss-Prot Function]

Product images:



Circular map for MR204533L2



Double digestion of MR204533L2 using SgfI and MluI