

## Product datasheet for MR204502

### Pitx1 (NM\_011097) Mouse Tagged ORF Clone

#### Product data:

Product Type:	Expression Plasmids
Product Name:	Pitx1 (NM_011097) Mouse Tagged ORF Clone
Tag:	Myc-DDK
Symbol:	Pitx1
Synonyms:	Bft; P-OTX; Potx; Ptx1
Mammalian Cell Selection:	Neomycin
Vector:	pCMV6-Entry (PS100001)
E. coli Selection:	Kanamycin (25 ug/mL)
ORF Nucleotide Sequence:	>MR204502 ORF sequence Red=Cloning site Blue=ORF Green=Tags(s)

TTTTGTAATACGACTCACTATAGGGCGGCCGGAATTCGTCGACTGGATCCGGTACCGAGGAGATCTGCC  
GCC**CGATCGCC**

ATGGACGCCTTCAAGGGAGGCATGAGCCTGGAGAGGCTACCGAGGGGCTGCGGCCACCGCCACCACCAC  
CGCACGACATGGGGCCAGCTTCCACCTGGCCCGCGCCGACCCCGGGAGCCGCTGGAGAATCCGC  
CAGCGAATCGTCCGACGCTGATCTGCCAGACAAGGAGCGCGGTGGGAAGCCAAGGGCCAGAGGATGGT  
GGCGGGCAGTCTGGCTGCGGCGCGGTGCAGAGGACCCAGCTAAGAAGAAGAAACAGCGCGGCAAC  
GCACTCACTTACAAGCCAGCAGTTGCAAGAGCTGGAGGCCACGTTCAAAGGAACCGCTACCCGACAT  
GAGCATGAGAGAGGAGATCGCGGTGTGGACCAACCTCACTGAACCGGAGTGCAGGCTCTGGTTCAAGAAC  
CGCGAGCCAAATGGCGCAAGCGGGAGCGGAACAGCAGTTGGACCTGTGCAAGGGCGGCTATGTGCCGC  
AGTTCAGCGGCCTGGTGCAGCCCTACGAGGACGTGTACGCTGCCGGCTACTCCTACAACAACTGGGCGGC  
CAAGAGCCTGGCCCCGGCGCCGCTGTCTACCAAGAGCTTACCTTCTTCAACTCCATGAGCCCGCTCTCC  
TCTCAATCCATGTTCTCGGCCCCAGCTCCATCTTCCATGACCATGCCGTCCAGCATGGGCCCGGGCG  
CCGTGCCCGGCATGCCAACTCGGGCTCAACAACATCAACAACCTCACCGGCTCCTCGTCAACTCGGC  
CATGTGCGCGGGCGCCTGCCCTACGGCACCCAGCCTCGCCCTACAGCGTCTACCGGGACAGTGAAC  
TCGAGCCTTGCCAGCCTGCGGCTCAAGTCCAAGCAGCACTCGTCGTTGGCTATGGCGGTCTGCAGGGTC  
CGCGCTCGGGCTCAACGCTTGCCAGTACAACAGC

**ACGCGT**ACGCGGCCGCTCGAGCAGAAACTCATCTCAGAAGAGGATCTGGCAGCAAATGATATCCTGGATT  
ACAAGGATGACGACGATAAGGTTTAA



[View online »](#)

**Protein Sequence:** >MR204502 protein sequence  
 Red=Cloning site Green=Tags(s)

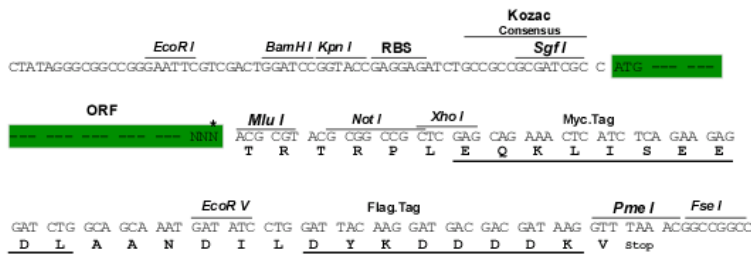
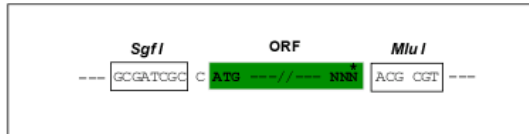
MDAFKGGMSLERLPEGLRPPPPPHDMGPSFHLARAADPRELENSASESSDADLPDKERGGEAKGPEDG  
 GAGSAGCGGGAEDPAKKKQRRQRTHFTSQQLQELEATFQRNRYPDMSMREEIAVVTNLTEPRVRVWFKN  
 RRAKWRKRERNQQLDLCKGGYVPQFSGLVQPYEDVYAAAGYSYNNWAAKSLAPAPLSTKSFTFFNSMSPLS  
 SQSMFSAPSSISSMTMPSSMGPVAVPGMPNSGLNNINNLTGSSLSNSAMSPGACPYGTPASPYSVYRDTCN  
 SSLASLRLLKSKQHSSFGYGGQLQGPASGLNACQYNS

TRTRPLEQKLISEEDLAANDILDYKDDDDKV

**Restriction Sites:** SgfI-MluI

**Cloning Scheme:**

Cloning sites used for ORF Shuttling:



\* The last codon before the Stop codon of the ORF

**ACCN:** NM\_011097

**ORF Size:** 948 bp

**OTI Disclaimer:** The molecular sequence of this clone aligns with the gene accession number as a point of reference only. However, individual transcript sequences of the same gene can differ through naturally occurring variations (e.g. polymorphisms), each with its own valid existence. This clone is substantially in agreement with the reference, but a complete review of all prevailing variants is recommended prior to use. [More info](#)

**OTI Annotation:** This clone was engineered to express the complete ORF with an expression tag. Expression varies depending on the nature of the gene.

**Components:** The ORF clone is ion-exchange column purified and shipped in a 2D barcoded Matrix tube containing 10ug of transfection-ready, dried plasmid DNA (reconstitute with 100 ul of water).

**Reconstitution Method:**

1. Centrifuge at 5,000xg for 5min.
2. Carefully open the tube and add 100ul of sterile water to dissolve the DNA.
3. Close the tube and incubate for 10 minutes at room temperature.
4. Briefly vortex the tube and then do a quick spin (less than 5000xg) to concentrate the liquid at the bottom.
5. Store the suspended plasmid at -20°C. The DNA is stable for at least one year from date of shipping when stored at -20°C.

**RefSeq:** [NM\\_011097.2](#), [NP\\_035227.1](#)

**RefSeq Size:** 2448 bp

**RefSeq ORF:** 948 bp

**Locus ID:** 18740

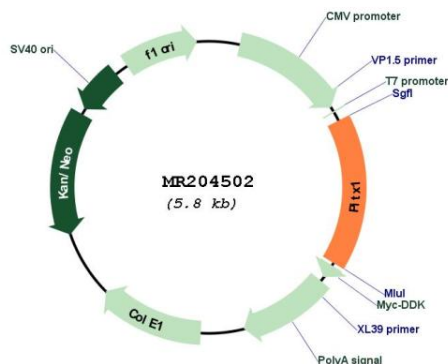
**UniProt ID:** [P70314](#)

**Cytogenetics:** 13 30.06 cM

**MW:** 34.1 kDa

**Gene Summary:** Sequence-specific transcription factor that binds gene promoters and activates their transcription. May play a role in the development of anterior structures, and in particular, the brain and facies and in specifying the identity or structure of hindlimb. Can independently activate and synergize with PIT-1 on pituitary-specific target gene promoters, thus may subserve functions in generating both precursor and specific cell phenotypes in the anterior pituitary gland and in several other organs. Can activate pituitary transcription of the proopiomelanocortin gene.[UniProtKB/Swiss-Prot Function]

## Product images:



Circular map for MR204502