

## Product datasheet for MR204496

### Phox2b (NM\_008888) Mouse Tagged ORF Clone

#### Product data:

Product Type:	Expression Plasmids
Product Name:	Phox2b (NM_008888) Mouse Tagged ORF Clone
Tag:	Myc-DDK
Symbol:	Phox2b
Synonyms:	Dilp1; NBPhox; Pmx2b; Px2b
Mammalian Cell Selection:	Neomycin
Vector:	pCMV6-Entry (PS100001)
E. coli Selection:	Kanamycin (25 ug/mL)
ORF Nucleotide Sequence:	>MR204496 ORF sequence Red=Cloning site Blue=ORF Green=Tags(s)

TTTTGTAATACGACTCACTATAGGGCGGCCGGAATTCGTCGACTGGATCCGGTACCGAGGAGATCTGCC  
GCC**CGATCGCC**

ATGTATAAAATGGAATATTCTTACCTCAATTCCTCTGCCTACGAGTCCTGTATGGCCGGGATGGATACCT  
CCAGCTTGGCTTCAGCATATGCAGACTTCAGTTCCTGCAGCCAGGCCAGTGGCTTCCAGTATAACCCGAT  
AAGGACCACTTTTGGGGCCACGTCGGTTCGCCGTCCTCACGCCGGGATCCTGCAGCCTGGGCACCCTC  
AGGGACCACCAGAGCAGTCCGTACGCCGAGTTCATACAACTTTCACCGACCAGGGCGCCTCAACG  
AGAAACGCAAGCAGCGGCATCCGCACCACCTTCAAGCGCGCAGCTCAAAGATTGGAGAGGGTCTT  
CGCTGAGACGCACTACCTGACATCTACACCAGGGAAGAGCTAGCACTGAAGATCGACCTCACCGAGGCG  
AGAGTCCAGGTGTGGTTCAGAACCGCCGGCTAAGTTTCGCAAGCAGGAGCGCGCAGCCGCCGCTGCTG  
CCGCCGCCCAAAAACGGCTCCTCCGGGAAGAAGTCTGACTCCTCCCGGACGACGAGAGCAAAGAGGC  
CAAGAGCACTGATCCCGACAGCACTGGGGGCCCGGACCAACCCCAACCCGACCCCACTGTGGGGCA  
AATGGCGCGGTGGCGGAGGGCCAGCCAGCCGAGCTCCGGGGCGCGGGCCCGGGGGCCCGGGAG  
GCGAACCCGCAAGGGCGGTGCGGCTGCGGCTGCTGCTGACGTCGAGCGGCTGCAGCGGCTGCGGC  
TGCGCGCGGGAGGCTGGCTGCGGCCGAGGCCCGGACAAGGCTGGGCTCCTGGCCCCGGCCCCATC  
ACCTCCATCCAGATTCTTTGGGGGCCCTTCGCCAGCGTCTTATCTTCGCTCCAAAGACCAACGGTG  
CCAAAGCCGCCTTAGTGAAGAGCAGTATGTTC

**ACGCGT**ACGCGGCCGCTCGAGCAGAACTCATCTCAGAAGAGGATCTGGCAGCAAATGATATCCTGGATT  
ACAAGGATGACGACGATAAGGTTTAA



[View online »](#)

**Protein Sequence:** >MR204496 protein sequence  
Red=Cloning site Green=Tags(s)

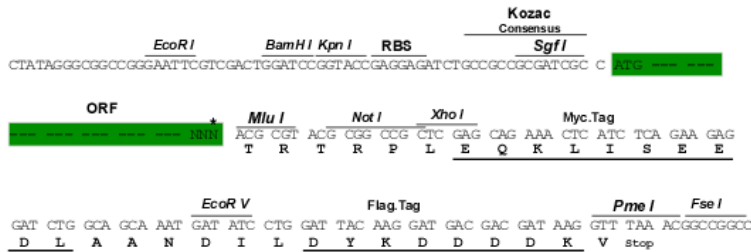
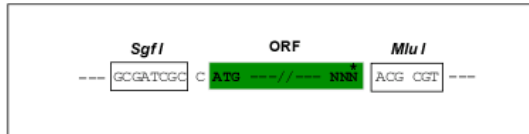
MYKMEYSYLNSSAYESCMAGMDTSSLASAYADFSSCSQASGFQYNPIRTTFGATSGCPSLTPGSCSLGTL  
RDHQSSPYAAMPYKLFTHHGGLNEKRKQRRIRTTFTSAQLKELERVFAETHYPDIYTREELALKIDLTEA  
RVQVWFQNRRAKFRKQERAAAAAAAAAKNGSSGKKSDSSRDDEKEAKSTDPDSTGGPGPNPNTPCGA  
NGGGGGPSPAGAPGAAGPGGPGGEPGKGGAAAAAAAAAAAAAAAAAAGGLAAAGGPGQGWAPGPGPI  
TSIPDSLGGPFASVLSLQRPNGAKAALVKSSMF

TRTRPLEQKLISEEDLAANDILDYKDDDDKV

**Restriction Sites:** SgfI-MluI

**Cloning Scheme:**

Cloning sites used for ORF Shuttling:



\* The last codon before the Stop codon of the ORF

**ACCN:** NM\_008888

**ORF Size:** 945 bp

**OTI Disclaimer:** The molecular sequence of this clone aligns with the gene accession number as a point of reference only. However, individual transcript sequences of the same gene can differ through naturally occurring variations (e.g. polymorphisms), each with its own valid existence. This clone is substantially in agreement with the reference, but a complete review of all prevailing variants is recommended prior to use. [More info](#)

**OTI Annotation:** This clone was engineered to express the complete ORF with an expression tag. Expression varies depending on the nature of the gene.

**Components:** The ORF clone is ion-exchange column purified and shipped in a 2D barcoded Matrix tube containing 10ug of transfection-ready, dried plasmid DNA (reconstitute with 100 ul of water).

**Reconstitution Method:**

1. Centrifuge at 5,000xg for 5min.
2. Carefully open the tube and add 100ul of sterile water to dissolve the DNA.
3. Close the tube and incubate for 10 minutes at room temperature.
4. Briefly vortex the tube and then do a quick spin (less than 5000xg) to concentrate the liquid at the bottom.
5. Store the suspended plasmid at -20°C. The DNA is stable for at least one year from date of shipping when stored at -20°C.

**RefSeq:** [NM\\_008888.3](#)

**RefSeq Size:** 2856 bp

**RefSeq ORF:** 945 bp

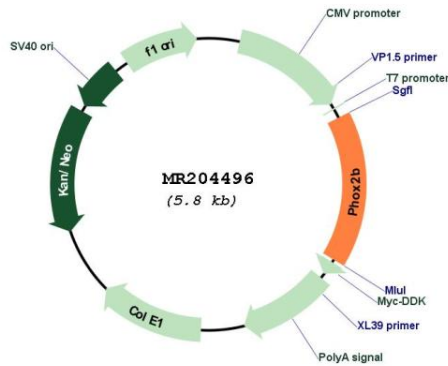
**Locus ID:** 18935

**UniProt ID:** [O35690](#)

**Cytogenetics:** 5 35.95 cM

**MW:** 31.6 kDa

**Product images:**



Circular map for MR204496