

Product datasheet for MR204487

Epsti1 (BC020120) Mouse Tagged ORF Clone

Product data:

| | |
|---------------------------|---|
| Product Type: | Expression Plasmids |
| Product Name: | Epsti1 (BC020120) Mouse Tagged ORF Clone |
| Tag: | Myc-DDK |
| Symbol: | Epsti1 |
| Synonyms: | 2310046K10Rik; 5033415K03Rik; BRES11 |
| Mammalian Cell Selection: | Neomycin |
| Vector: | pCMV6-Entry (PS100001) |
| E. coli Selection: | Kanamycin (25 ug/mL) |
| ORF Nucleotide Sequence: | >MR204487 ORF sequence Red=Cloning site Blue=ORF Green=Tags(s) |

TTTTGTAATACGACTCACTATAGGGCGCCGGGAATTCGTCGACTGGATCCGGTACCGAGGAGATCTGCC
GCC**CGATCGCC**

ATGTACACCCGCAGTAAGGTGGTGGGCCAGGCTTGGGCACTTCCTCCATCTCTCGGGACCACGCTGGAG
CTGGGCAGCGCAGGGAGCTGGGCTTGCAGCAAACCGGAGACAGAGTTTGGAGGTGGCAGCTCCCGAGGG
CCCCAAGATGGAGAGGCAGGGGCATGCTGACCAGGGAAGCGCAGGCACATACACCCTGATAGCACCGAAC
GAGAGCAGAAGGCAGAAGATACAGAGAATTGCTGAGCAAGAAGTGGCAGACCTGGAGAGATGGAAGCAAC
AGAACAGGGCAAACAGTCTACTTGGTGCCACAACGGCTGGGTGGAAGCCAGTCTGAGGCTGAAGTCAG
ACAGAAAACAACAGCTGCAACAGATGCGTTCTAAATACCAGCAAAGCTCAAGAGGGATGAATCTATTCTGA
ATCAGGAAGGAAGCTGAGGAAGCCAAGTTCAAAAAATGAAAGCAATCCAGAGGGAGAAGAGTAATAAAC
TAGAGGAGAAAAAGCAACTTCAAGAAGACATCAGAAGAGCCAAGTTTCGAGAGCATCATCAGTCCAAAAAC
GGCTGAGTTCTTGAGCAGACTGGACACAGAGCGGAGAAACAGAAGTGCCTGTCCGATTGCTCCTCCTGCC
ACCCAGTCTCGAGATGGAAACTTCCAGTCTGCTTAAAGATCCCAGCTGGGCCGGCAGCCAAGCACACA
GGGATTCTCCGCAGAAGGAAGACAACCCAGGCTGCAAAGACGAGGGATGGACATCAGAAGAATAAATT
ACTGAAAATAAAGGACAGCACCAGGAGGAAGAAAGAGCCCAAATCCATCAAGCTGAACACTGGAGGGTA
AATAATGCTTTTCTGGACCGACTCCAAGGCAAAGTCAACCAGGTGGCCTCAAGCAGTCTGGAGGCTGTT
GCAATATGAATAGTACTGACAGCTGGGGTATA

ACGCGTACGCGGCCGCTCGAGCAGAAACTCATCTCAGAAGAGGATCTGGCAGCAAATGATATCCTGGATT
ACAAGGATGACGACGATAAGGTTTAA



[View online »](#)

Protein Sequence: >MR204487 protein sequence
Red=Cloning site Green=Tags(s)

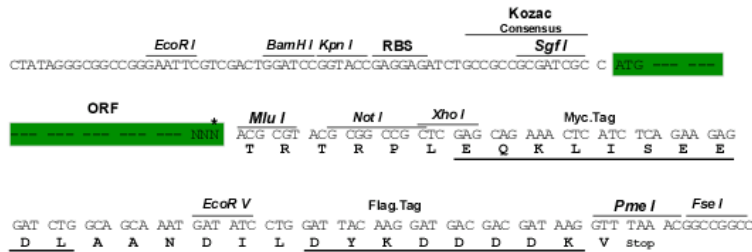
MYTRSKVVGPLGTSSISRDHAGAGQRRELGLQNNRRQSLVAAPEGPKMERQGHADQGSAGTYTLIAPN
 ESRRQKIQRIAEQELADLERWKQNNRAKPVYLVPQRLGGSQSEAEVRQKQQLQQMRSKYQQLKRDESIR
 IRKEAEEAKFQMKAIQREKSNKLEKKQLQEDIRRAKFRHHQSKTAEFLSRLDTERNNRSACPIAPPA
 TQSSRWKLPVLLKDP SWAGSQAHRDSPQKEDNPR LQKTRDGHQKNKLL ETKGQH QEEERAQIHQA EHWRV
 NNAFLDRLQGKSQPGLKQSGGCCNMNSTDSWGI

TRTRPLEQKLISEEDLAANDILDYKDDDDKV

Restriction Sites: SgfI-MluI

Cloning Scheme:

Cloning sites used for ORF Shuttling:



* The last codon before the Stop codon of the ORF

ACCN: BC020120

ORF Size: 942 bp

OTI Disclaimer: The molecular sequence of this clone aligns with the gene accession number as a point of reference only. However, individual transcript sequences of the same gene can differ through naturally occurring variations (e.g. polymorphisms), each with its own valid existence. This clone is substantially in agreement with the reference, but a complete review of all prevailing variants is recommended prior to use. [More info](#)

OTI Annotation: This clone was engineered to express the complete ORF with an expression tag. Expression varies depending on the nature of the gene.

Components: The ORF clone is ion-exchange column purified and shipped in a 2D barcoded Matrix tube containing 10ug of transfection-ready, dried plasmid DNA (reconstitute with 100 ul of water).

Reconstitution Method:

1. Centrifuge at 5,000xg for 5min.
2. Carefully open the tube and add 100ul of sterile water to dissolve the DNA.
3. Close the tube and incubate for 10 minutes at room temperature.
4. Briefly vortex the tube and then do a quick spin (less than 5000xg) to concentrate the liquid at the bottom.
5. Store the suspended plasmid at -20°C. The DNA is stable for at least one year from date of shipping when stored at -20°C.

RefSeq: [BC020120](#), [AAH20120](#)

RefSeq Size: 1719 bp

RefSeq ORF: 944 bp

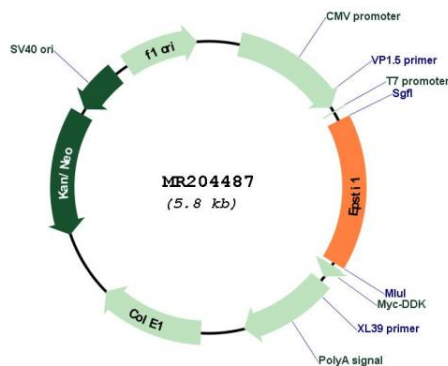
Locus ID: 108670

Cytogenetics: 14 D3

MW: 36.1 kDa

Gene Summary: Plays a role in M1 macrophage polarization and is required for the proper regulation of gene expression during M1 versus M2 macrophage differentiation (PubMed:29217193). Might play a role in RELA/p65 and STAT1 phosphorylation and nuclear localization upon activation of macrophages (PubMed:29217193).[UniProtKB/Swiss-Prot Function]

Product images:



Circular map for MR204487