

## Product datasheet for **MR204484**

### Cnksr3 (BC031194) Mouse Tagged ORF Clone

#### Product data:

Product Type:	Expression Plasmids
Product Name:	Cnksr3 (BC031194) Mouse Tagged ORF Clone
Tag:	Myc-DDK
Symbol:	Cnksr3
Synonyms:	MGC37681, 6820402C05
Mammalian Cell Selection:	Neomycin
Vector:	pCMV6-Entry (PS100001)
E. coli Selection:	Kanamycin (25 ug/mL)
ORF Nucleotide Sequence:	>MR204484 ORF sequence Red=Cloning site Blue=ORF Green=Tags(s)

TTTTGTAATACGACTCACTATAGGGCGGCCGGAATTCGTCGACTGGATCCGGTACCGAGGAGATCTGCC  
GCC**CGATCGCC**

ATGCAGTCTCCTGCAGACAGATCTCAAAGATTACGCTGGCGATGAGGTCATTCAAGTCAATCGGCAGA  
CAGTGGTTGGGTGGCAGTTGAAAATCTGGTGAGAAAGTTGAGAGAGAACCCACGGGCGTGGTCTGCT  
GCTGAAGAAGAGGCCACGGGCTCCTTCAGCTTCACTCCGGCCCCACTGAAGAACCTGCGGTGGAAGCCA  
CCGCTCGTGCAGACCTCACCCCGCCACCACCACCCAGTCCCCAGAGAGTACCATGGATGCCTCCCTGA  
AGAAGGAGAAGCCAGCCATCCTGGACCTATACATCCCTCCCCACCTGCTGTCCCTACTCTCCCGGGA  
TGAGAATGTGAGTTTCGGCTACAGAGGACACAGTAAGAGTAAGCAGCCGTTGCCTGTGCGCAAGGGTTCC  
GAGTCCCCTAACTCCTTCTGGACCAGGAGAGCCAAAGACGCAGATTTACCATTGCAGATTCGGATCAGC  
TGCCCCGGTATTCGGTGGAAACCAATGTTCTGCCACAAAAATGAGAGGGAAAGACACCATCCTACGGCAA  
ACCCCGGCCTCTGTCCATGCCTGCCGATGGAACTGGATGGGGATCGTGGACCCTTTTGCTAAACCTCGA  
GGAAATGGGAGGAAAGGGGAAGATGCCCTCTGCCGGTATTTAGCAATGAGCGGATCACACCCATCACTG  
AAGAAAGTGCCTCTCCTATGTACCGTTCTTAGACCCCTGACTGAGCGGCACCTGGTCCGAGGTGCGGA  
CTACATCCGAGGGAGCAGGTGCTACATCAACTCCGACCTACACAGCAGTGCCACCATTCCATTCCAGGAG  
GAAGGTTCCAAGAAGAAATCAGCCTCCTCATCGGCCAAGGCGTCTCTGGGGAGCCGTCGCTGCTGGTCA  
GCTGGCTGACTCGCCTCAAGCTGTTGACTCAC

**ACGCGT**ACGCGGCCGCTCGAGCAGAAACTCATCTCAGAAGAGGATCTGGCAGCAAATGATATCCTGGATT  
ACAAGGATGACGACGATAAGGTTTAA



[View online »](#)

**Protein Sequence:** >MR204484 protein sequence  
Red=Cloning site Green=Tags(s)

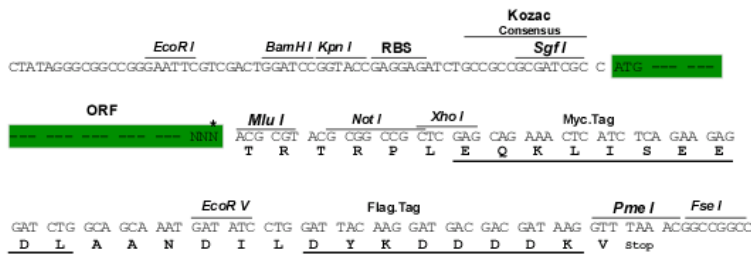
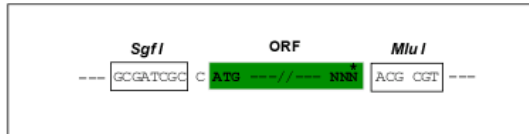
MQSPADRSQKIHAGDEVIQVNRQTVVGWQLKNLVRKLRNPTGVVLLKKRPTGSFSFTAPLKNLRWKP  
 PLVQTSPPPTTTQSPSTMDASLKKEKPAILDLYIPPPAVPYSRPDENVSFGYRGHSKSKQPLPVRKGS  
 ESPNSFLDQESQRRRFTIADSDQLPGYSVETNVLPTKMRGKTPSYGKPRPLSMPADGNWVGIVDPFAKPR  
 GNGRKGEDALCRYFSNERITPITEESASPMYRFSRPLTERHLVRGADYIRGSRCYINSDLHSSATIPFQE  
 EGSKKKSASSSAKASSGEPSSLVSWLTRLKLLTH

TRTRPLEQKLISEEDLAANDILDYKDDDDKV

**Restriction Sites:** SgfI-MluI

**Cloning Scheme:**

Cloning sites used for ORF Shuttling:



\* The last codon before the Stop codon of the ORF

**ACCN:** BC031194

**ORF Size:** 942 bp

**OTI Disclaimer:** The molecular sequence of this clone aligns with the gene accession number as a point of reference only. However, individual transcript sequences of the same gene can differ through naturally occurring variations (e.g. polymorphisms), each with its own valid existence. This clone is substantially in agreement with the reference, but a complete review of all prevailing variants is recommended prior to use. [More info](#)

**OTI Annotation:** This clone was engineered to express the complete ORF with an expression tag. Expression varies depending on the nature of the gene.

**Components:** The ORF clone is ion-exchange column purified and shipped in a 2D barcoded Matrix tube containing 10ug of transfection-ready, dried plasmid DNA (reconstitute with 100 ul of water).

**Reconstitution Method:**

1. Centrifuge at 5,000xg for 5min.
2. Carefully open the tube and add 100ul of sterile water to dissolve the DNA.
3. Close the tube and incubate for 10 minutes at room temperature.
4. Briefly vortex the tube and then do a quick spin (less than 5000xg) to concentrate the liquid at the bottom.
5. Store the suspended plasmid at -20°C. The DNA is stable for at least one year from date of shipping when stored at -20°C.

**RefSeq:** [BC031194](#), [AAH31194](#)

**RefSeq Size:** 2566 bp

**RefSeq ORF:** 944 bp

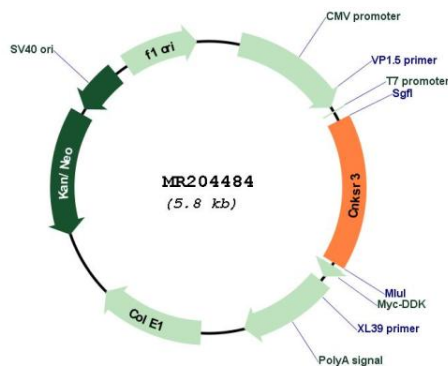
**Locus ID:** 215748

**Cytogenetics:** 10 A1

**MW:** 35 kDa

**Gene Summary:** Involved in transepithelial sodium transport. Regulates aldosterone-induced and epithelial sodium channel (ENaC)-mediated sodium transport through regulation of ENaC cell surface expression. Acts as a scaffold protein coordinating the assembly of an ENaC-regulatory complex (ERC).[UniProtKB/Swiss-Prot Function]

**Product images:**



Circular map for MR204484