

Product datasheet for MR204483

Slc25a44 (NM_001145876) Mouse Tagged ORF Clone

Product data:

Product Type: Expression Plasmids
Product Name: Slc25a44 (NM_001145876) Mouse Tagged ORF Clone
Tag: Myc-DDK
Symbol: Slc25a44
Synonyms: 6720482A19; B430110G05Rik
Mammalian Cell Selection: Neomycin
Vector: pCMV6-Entry (PS100001)
E. coli Selection: Kanamycin (25 ug/mL)
ORF Nucleotide Sequence: >MR204483 representing NM_001145876
 Red=Cloning site Blue=ORF Green=Tags(s)

TTTTGTAATACGACTCACTATAGGGCGGCCGGAATTCGTCGACTGGATCCGGTACCGAGGAGATCTGCC
 GCC**CGATCGCC**

ATGGAGGACAAACGGAACATCCAGATCATCGAGTGGGAGCACCTGGACAAGAAGAAGTTCTATGTGTTTG
 GTGTTGCTATGACAATGATGATCAGGGTCAGCGTGTACCCGTTACCCCTCATCCGCACCCGCTGCAGGT
 CCAGAAGGGCAAGAGCCTCTACCACGGGACCTTCGATGCCTTTGTCAAGATCCTGCGAGCAGATGGAGTG
 GCGGGCCTCTACCGGGGTTCTGGTCAACACCTTCACACTCATCTCCGGCCAGTGCTATGTCACCACTT
 ACGAGCTCACCCGGAAGTTTGTGGCAGACTACAGCCAGAGTAACACAGTCAAATCACTCGTAGCCGGGGG
 CTGGCCCTCCCTTGTGGCCAGAGCATCACGGTCCGATCGATGTTGTCTCCCAACATCTGATGATGCAG
 CGGAAGGGTGAGAAAATGGTTCGCTTCCAAGTGCACGGGAACCTAGAGGGACAAGGGGTGATTGCCTTTG
 GCCAGACTAAGGACATCATCAGGCAGATCCTTCGGGCTGACGGTCTCCGAGGCTTCTACCGGGGCTATGT
 GGCCTCGCTGCTAACGTACATCCCAAACAGTGTCTGTGGTGGCCCTTCTACCACTTCTATGCAGAGCAG
 CTGTGCGCCTGTGCCCTCAGGAGTGCCCTCACATTGTCTTTCAAGCCATCTCTGGGCCCTGGCTGCAG
 CCACTGCCTCCATCCTCACCAATCCCATGGATGTATCAGAACCCTGTGCAGGTTGAAGGCAAGAGCTC
 CATCGTCTGACCTTCAGGCAGCTGATGGCAGAGGAGGGCCCTTGGGGCCTCATGAAGGGCCTCTCGGCA
 AGAATCATCTCGGCTACCCCTCCACATCGTCATCGTGGTGGCTACGAGAGCCTCAAGAAGCTCAGCC
 TCGGACCTGAGCTGGTGGACTCGAGACTG

ACGCGTACGCGGCCGCTCGAGCAGAAACTCATCTCAGAAGAGGATCTGGCAGCAAATGATATCCTGGATT
 ACAAGGATGACGACGATAAGGTTTAA



[View online »](#)

Protein Sequence: >MR204483 representing NM_001145876
 Red=Cloning site Green=Tags(s)

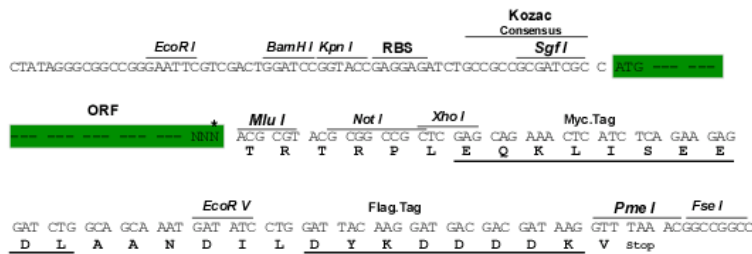
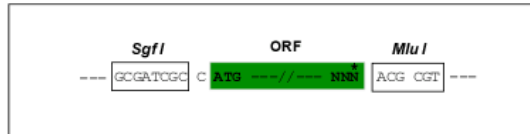
MEDKRNIIQIIEWEHLDKKKFYVFGVAMTMMIRVSVYPFTLIRTRLQVQKGSLYHGTFDAFVKILRADGV
 AGLYRGLVNTFTLISGQCYVTTYELTRKFVADYSQSNTVKSLVAGGSASLVAQSITVPIDVVSQHLMMQ
 RKGEKMGFRFQVHGNLEGQGVIAFGQTKDIIHQILRADGLRGFYRGYVASLLTYIPNSAVWPFYHFYAEQ
 LSRLCPQECPHIVFQAISGPLAAATASILNTPMDVIRTRVQVEGKSSIVLTFRQLMAEEGPWGLMKGLSA
 RIISATPSTIVIVVGYESLKKLSLRPELVDSRHW

TRTRPLEQKLISEEDLAANDILDYKDDDDKV

Restriction Sites: SgfI-MluI

Cloning Scheme:

Cloning sites used for ORF Shuttling:



* The last codon before the Stop codon of the ORF

ACCN: NM_001145876

ORF Size: 942 bp

OTI Disclaimer: The molecular sequence of this clone aligns with the gene accession number as a point of reference only. However, individual transcript sequences of the same gene can differ through naturally occurring variations (e.g. polymorphisms), each with its own valid existence. This clone is substantially in agreement with the reference, but a complete review of all prevailing variants is recommended prior to use. [More info](#)

OTI Annotation: This clone was engineered to express the complete ORF with an expression tag. Expression varies depending on the nature of the gene.

Components: The ORF clone is ion-exchange column purified and shipped in a 2D barcoded Matrix tube containing 10ug of transfection-ready, dried plasmid DNA (reconstitute with 100 ul of water).

Reconstitution Method:

1. Centrifuge at 5,000xg for 5min.
2. Carefully open the tube and add 100ul of sterile water to dissolve the DNA.
3. Close the tube and incubate for 10 minutes at room temperature.
4. Briefly vortex the tube and then do a quick spin (less than 5000xg) to concentrate the liquid at the bottom.
5. Store the suspended plasmid at -20°C. The DNA is stable for at least one year from date of shipping when stored at -20°C.

RefSeq: [NM_001145876.2](#), [NP_001139348.1](#)

RefSeq Size: 3546 bp

RefSeq ORF: 945 bp

Locus ID: 229517

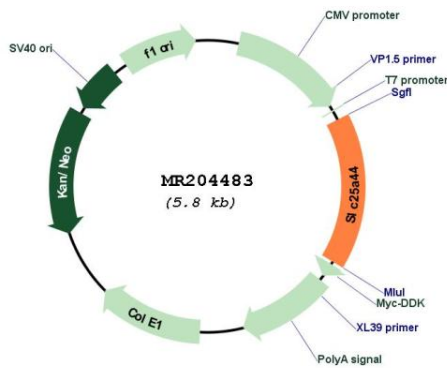
UniProt ID: [Q8BGF9](#)

Cytogenetics: 3 F1

MW: 35.8 kDa

Gene Summary: Mitochondrial solute transporter which transports branched-chain amino acid (BCAA; valine, leucine and isoleucine) into mitochondria in brown adipose tissue (BAT) (PubMed:31435015). BAT is involved in BCAA catabolism and actively utilizes BCAA in the mitochondria for thermogenesis (PubMed:31435015).[UniProtKB/Swiss-Prot Function]

Product images:



Circular map for MR204483