

Product datasheet for **MR204457L4V**

Prkra (NM_011871) Mouse Tagged ORF Clone Lentiviral Particle

Product data:

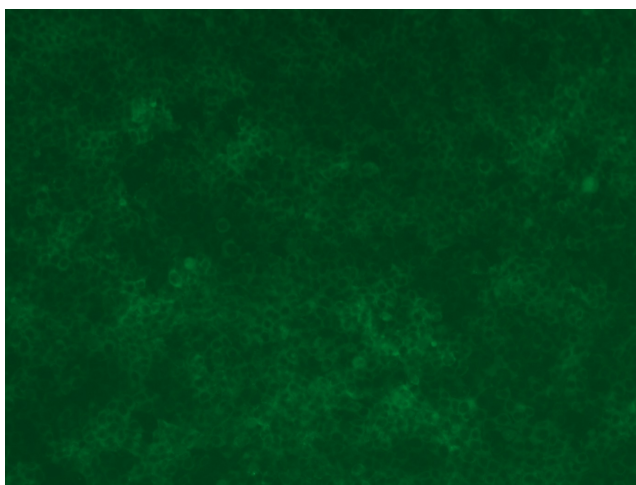
Product Type:	Lentiviral Particles
Product Name:	Prkra (NM_011871) Mouse Tagged ORF Clone Lentiviral Particle
Symbol:	Prkra
Synonyms:	AV120107; lear; Pact; PRK; RAX
Mammalian Cell Selection:	Puromycin
Vector:	pLenti-C-mGFP-P2A-Puro (PS100093)
Tag:	mGFP
ACCN:	NM_011871
ORF Size:	942 bp
ORF Nucleotide Sequence:	The ORF insert of this clone is exactly the same as(MR204457).
OTI Disclaimer:	The molecular sequence of this clone aligns with the gene accession number as a point of reference only. However, individual transcript sequences of the same gene can differ through naturally occurring variations (e.g. polymorphisms), each with its own valid existence. This clone is substantially in agreement with the reference, but a complete review of all prevailing variants is recommended prior to use. More info
OTI Annotation:	This clone was engineered to express the complete ORF with an expression tag. Expression varies depending on the nature of the gene.
RefSeq:	NM_011871.2
RefSeq Size:	1554 bp
RefSeq ORF:	942 bp
Locus ID:	23992
UniProt ID:	Q9WTX2
Cytogenetics:	2 C3



[View online »](#)

Gene Summary:

Required for siRNA production by DICER1 and for subsequent siRNA-mediated post-transcriptional gene silencing. Does not seem to be required for processing of pre-miRNA to miRNA by DICER1 (By similarity). Activates EIF2AK2/PKR in the absence of double-stranded RNA (dsRNA), leading to phosphorylation of EIF2S1/EIF2-alpha and inhibition of translation and induction of apoptosis. Promotes UBC9-p53/TP53 association and sumoylation and phosphorylation of p53/TP53 at 'Lys-386' at 'Ser-392' respectively and enhances its activity in a EIF2AK2/PKR-dependent manner.[UniProtKB/Swiss-Prot Function]

Product images:

[MR204457L4] was used to prepare Lentiviral particles using [TR30037] packaging kit. HEK293T cells were transduced with MR204457L4V particle to overexpress human Prkra-mGFP fusion protein.