

## Product datasheet for MR204431

### Ctso (NM\_177662) Mouse Tagged ORF Clone

#### Product data:

|                           |   |
|---------------------------|---|
| Product Type:             | Expression Plasmids   |
| Product Name:             | Ctso (NM_177662) Mouse Tagged ORF Clone                                     |
| Tag:                      | Myc-DDK   |
| Symbol:                   | Ctso  |
| Synonyms:                 | A330105D01Rik; A1118514   |
| Mammalian Cell Selection: | Neomycin  |
| Vector:                   | pCMV6-Entry (PS100001)  |
| E. coli Selection:        | Kanamycin (25 ug/mL)  |
| ORF Nucleotide Sequence:  | >MR204431 representing NM_177662<br>Red=Cloning site Blue=ORF Green=Tags(s) |

TTTTGTAATACGACTCACTATAGGGCGGCCGGAATTCGTCGACTGGATCCGGTACCGAGGAGATCTGCC  
GCC**CGATCGCC**

ATGAAGCCGAGTTGGTGAACCTCTTGCTACTGTGTTGCTGCTGTCTCGGCCGCCACGGGTGCGCCGGA  
CCTGGTCTTGGAGCCACCAGCGGGAGGCCCGCCCTTGC GGAAAGCCTTCATAGACACCGATACTTGAA  
CTCTTTTCCTCATGAAACTCCACTGCCTTCTATGGAGTAAATCAGTTTTCTATTTGTTTCCTGAAGAG  
TTTAAAGCTTTGTATTTAGGCAGCAAATATGCCTGGGCTCCAGATACCCAGCAGAAGGACAGAGACCTA  
TCCCAATGTGTCTTTGCCATTGAGATTGACTGGAGGACAAGCATGTTGTGAATCCTGTAAGGAACCA  
GGAGATGTGTGGAGGATGCTGGGCCTTCAGCGTGGTGAAGTGCATAGAGTCAGCTCGTGAATCCAAGGG  
AAATCTCTGGATTACCTGAGCGTGCAGCAGGTCATCGACTGCTCCTTTAATAATTCTGGTGCCTCGGTG  
GCTCTCCTCTCTGTGCCTTGCCTGGCTAAATGAGACACAGTTGAAGTTGGTGGCAGATTCACAGTACCC  
ATTC AAGCAGTAAATGGCCAGTGTGCGCACTTTCCTCAATCACAAGCTGGAGTTTCAGTCAAGGATTTT  
TCTGCATATAACTTCAGGGGCCAAGAGGATGAAATGGCCAGAGCACTTCTGTCTTCGGCCCTTTGGTTG  
TGATAGTTGATGCGATGAGCTGGCAGGATTATCTGGGGGCATAATCCAACATCACTGCTCCAGTGGGGA  
GGCCAACCATGCCGTTCTCATCACAGGCTTTGATAGGACAGGAAATACACCATATTGGATGGTGGCAAC  
TCCTGGGATCCTCCTGGGAGTAGAAGGCTATGCCACGTGAAAATGGGAGGTAATGTTTGTGGCATTG  
CAGACTCTGTAGCTGCTGCTTTGTG

**ACGCGT**ACGCGGCCGCTCGAGCAGAAACTCATCTCAGAAGAGGATCTGGCAGCAAATGATATCCTGGATT  
ACAAGGATGACGACGATAAGGTTTAA



[View online »](#)

**Protein Sequence:** >MR204431 representing NM\_177662  
 Red=Cloning site Green=Tags(s)

MKPQLVNLLLLCCCLGRHGVAGTWSWSHQREAAALRESLHRHRYLNSFPHENSTAFYGVNQFSYLFPEE  
 FKALYLGSKYAWAPRYPAEQRPVSNVSLPLRFDWRDKHVNPVRNQEMCGGCWAFSVVSAIESARAIQG  
 KSLDYL SVQVVIDCSFNNSGCLGGSPICALRWLNETQLKLVADSQYPFKAVNGQCRHFQSQAGVSVKDF  
 SAYNFRGQEDEMARALLSFGPLVVIVDAMSWQDYLGGI IQHHCSSGEANHAVLITGFDRTGNTPYWMVNR  
 SWGSSWGVGEYAHVKMGGNVCGIADSVAAVFV

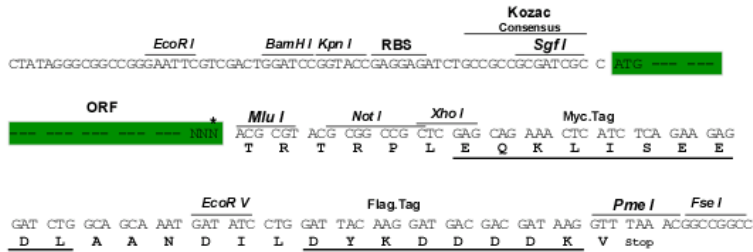
TRTRPLEQKLISEEDLAANDILDYKDDDDKVV

**Chromatograms:** [https://cdn.origene.com/chromatograms/mm9039\\_c04.zip](https://cdn.origene.com/chromatograms/mm9039_c04.zip)

**Restriction Sites:** SgfI-MluI

**Cloning Scheme:**

Cloning sites used for ORF Shuttling:



\* The last codon before the Stop codon of the ORF

**ACCN:** NM\_177662

**ORF Size:** 936 bp

**OTI Disclaimer:** The molecular sequence of this clone aligns with the gene accession number as a point of reference only. However, individual transcript sequences of the same gene can differ through naturally occurring variations (e.g. polymorphisms), each with its own valid existence. This clone is substantially in agreement with the reference, but a complete review of all prevailing variants is recommended prior to use. [More info](#)

**OTI Annotation:** This clone was engineered to express the complete ORF with an expression tag. Expression varies depending on the nature of the gene.

**Components:** The ORF clone is ion-exchange column purified and shipped in a 2D barcoded Matrix tube containing 10ug of transfection-ready, dried plasmid DNA (reconstitute with 100 ul of water).

**Reconstitution Method:**

1. Centrifuge at 5,000xg for 5min.
2. Carefully open the tube and add 100ul of sterile water to dissolve the DNA.
3. Close the tube and incubate for 10 minutes at room temperature.
4. Briefly vortex the tube and then do a quick spin (less than 5000xg) to concentrate the liquid at the bottom.
5. Store the suspended plasmid at -20°C. The DNA is stable for at least one year from date of shipping when stored at -20°C.

**RefSeq:** [NM\\_177662.3](#), [NP\\_808330.1](#)

**RefSeq Size:** 3453 bp

**RefSeq ORF:** 939 bp

**Locus ID:** 229445

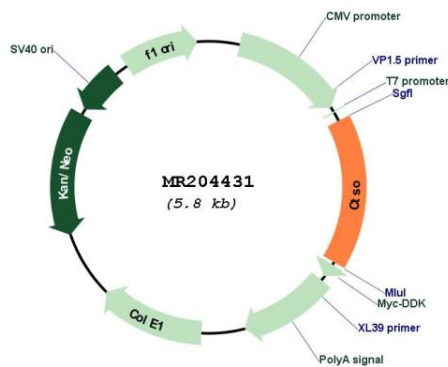
**UniProt ID:** [Q8BM88](#)

**Cytogenetics:** 3 E3

**MW:** 35.2 kDa

**Gene Summary:** This gene encodes a member of the cathepsin family of cysteine proteases that are involved in the degradation of cellular proteins. The encoded preproprotein undergoes proteolytic processing to generate a mature, functional enzyme. [provided by RefSeq, Jan 2016]

### Product images:



Circular map for MR204431