

## Product datasheet for MR204422

### Tpsg1 (NM\_012034) Mouse Tagged ORF Clone

#### Product data:

Product Type:	Expression Plasmids
Product Name:	Tpsg1 (NM_012034) Mouse Tagged ORF Clone
Tag:	Myc-DDK
Symbol:	Tpsg1
Synonyms:	Prss31; Tmt
Mammalian Cell Selection:	Neomycin
Vector:	pCMV6-Entry (PS100001)
E. coli Selection:	Kanamycin (25 ug/mL)
ORF Nucleotide Sequence:	>MR204422 ORF sequence Red=Cloning site Blue=ORF Green=Tags(s)

TTTTGTAATACGACTCACTATAGGGCGCCGGGAATTCGTCGACTGGATCCGGTACCGAGGAGATCTGCC  
GCC**CGATCGCC**

ATGGCTCTGGGGCCAACTGTGGCATCCTACTGTTTCTGGCTGTTTCTGGGTGTGGCCATCCCCAGGTTT  
CAAACCGGGAAGTCGAATCGTGGGAGGGCATGCTGCCCCAGCAGGCACATGGCCGTGGCAGGCTAGCCT  
CCGTCTGCACAAGGTGCACGTGTGTGGAGGCTCCCTGCTCAGTCCAGAATGGGTGCTCACAGCAGCCAC  
TGCTTCTCTGGGTCTGTGAACCTGTCTGATTATCAGGTGCACTTGGGAGAGCTTACGGTCACACTGTCTC  
CCCACTTCTCCACTGTAAAACGGATCATCATGTACACTGGCTCTCCAGGACCACCGGGTCCAGTGGGGA  
CATTGCCCTGGTGCAGCTGTCTCCCGGTGGCCCTTCCAGCCAGGTCCAGCCTGTGTGCCTCCCAGAG  
GCCTCAGCTGACTTCTACCCTGGGATGCAGTGCTGGGTGACTGGCTGGGGCTATACAGGGGAGGGAGAGC  
CTCTGAAGCCCCATACAACCTTCAGGAGGCCAAAGTCTCTGTGGTGGATGTAAGACCTGCAGCCAGGC  
TTACAATAGTCCAATGGCAGCCTCATCCAGCCAGACATGCTATGCGCCCGGGCCCTGGGGATGCCTGC  
CAGGATGACTCTGGAGGGCCACTAGTCTGCCAGGTGGCTGGAACCTGGCAGCAGGCCGGCGTTGTGAGT  
GGGGTGGGGCTGTGGCCGCCCTGACCGCCCTGGCGTCTATGCCCGGGTTACTGCCTATGTAACCTGGAT  
CCACCACCACATCCCGAAGCAGGGGGCTCAGGAATGCAAGGGCTTCCCTGGGCTCCTCTCTGGCTGCC  
CTCTTCTGGCCAAGCCTTCTCTGCTGCTGGTCTCTGGAGTCTGATGGCCAAGTACTGGCTGAGCTCTC  
CTCCCACGGCCCTCGGAATC

**ACGCGT**ACGCGGCCGCTCGAGCAGAACTCATCTCAGAAGAGGATCTGGCAGCAAATGATATCCTGGATT  
ACAAGGATGACGACGATAAGGTTTAA



[View online »](#)

**Protein Sequence:** >MR204422 protein sequence  
 Red=Cloning site Green=Tags(s)

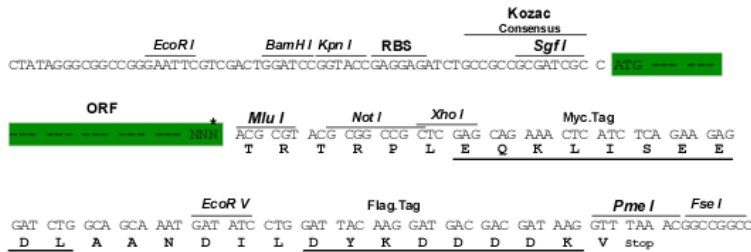
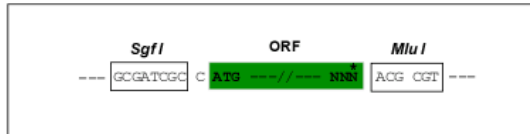
MALGPNCGILLFLAVSGCGHPQVSNVSGSRIVGGHAAPAGTWPWQASRLRHKVHVCGGSLLSPEWVLTAAH  
 CFSGSVNSDDYQVHLGELTVTLSPHFSTVKRIIMYTGSPGPPGSSGDIALVQLSSPVALSSVQVPCVCLPE  
 ASADFYPMQCVWVTGWGTYTGEPELKPYPNLQEAKVSVVDVKTCSEQAYNSPNSGLIQPDMLCARGPGDAC  
 QDDSGGPLVCQVAGTWQQAGVVSWGEGCGRPDRPGVYARVTAYVNWIIHHIPEAGGSGMQGLPWAPLLAA  
 LFWPSLFLLLVSGLVMAKYWLSSPSHAASEL

TRTRPLEQKLISEEDLAANDILDYKDDDDKV

**Restriction Sites:** SgfI-MluI

**Cloning Scheme:**

Cloning sites used for ORF Shutting:



**ACCN:** NM\_012034

**ORF Size:** 936 bp

**OTI Disclaimer:** The molecular sequence of this clone aligns with the gene accession number as a point of reference only. However, individual transcript sequences of the same gene can differ through naturally occurring variations (e.g. polymorphisms), each with its own valid existence. This clone is substantially in agreement with the reference, but a complete review of all prevailing variants is recommended prior to use. [More info](#)

**OTI Annotation:** This clone was engineered to express the complete ORF with an expression tag. Expression varies depending on the nature of the gene.

**Components:** The ORF clone is ion-exchange column purified and shipped in a 2D barcoded Matrix tube containing 10ug of transfection-ready, dried plasmid DNA (reconstitute with 100 ul of water).

**Reconstitution Method:**

1. Centrifuge at 5,000xg for 5min.
2. Carefully open the tube and add 100ul of sterile water to dissolve the DNA.
3. Close the tube and incubate for 10 minutes at room temperature.
4. Briefly vortex the tube and then do a quick spin (less than 5000xg) to concentrate the liquid at the bottom.
5. Store the suspended plasmid at -20°C. The DNA is stable for at least one year from date of shipping when stored at -20°C.

**RefSeq:** [NM\\_012034.2](#), [NP\\_036164.1](#)

**RefSeq Size:** 1217 bp

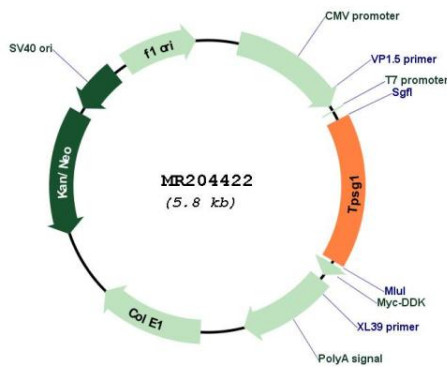
**RefSeq ORF:** 936 bp

**Locus ID:** 26945

**Cytogenetics:** 17 12.53 cM

**MW:** 32.7 kDa

**Product images:**



Circular map for MR204422