

## Product datasheet for **MR204418**

### Sdc1 (NM\_011519) Mouse Tagged ORF Clone

#### Product data:

Product Type:	Expression Plasmids
Product Name:	Sdc1 (NM_011519) Mouse Tagged ORF Clone
Tag:	Myc-DDK
Symbol:	Sdc1
Synonyms:	AA408134; AA409076; CD138; Sstn; syn-1; Synd; Synd1
Mammalian Cell Selection:	Neomycin
Vector:	pCMV6-Entry (PS100001)
E. coli Selection:	Kanamycin (25 ug/mL)
ORF Nucleotide Sequence:	>MR204418 ORF sequence Red=Cloning site Blue=ORF Green=Tags(s)

TTTTGTAATACGACTCACTATAGGGCGGCCGGAATTCGTCGACTGGATCCGGTACCGAGGAGATCTGCC  
GCC**CGATCGCC**

ATGAGACGCGCGGCTCTGGCTTTGGCTCTGCGCGCTGGCGCTGCGCCTGCAGCCTGCCCTCCCGCAA  
TTGTGGCTGTAATGTTCTCCTGAAGATCAGGATGGCTCTGGGGATGACTCTGACAACCTCTCTGGCTC  
TGGCACAGGTGCTTTGCCAGATACTTTGTACGGCAGACACCTTCCACTTGAAGGACGTGTGGCTGTTG  
ACAGCCACGCCACAGCTCCAGAGCCCACCAGCAGCAACACCGAGACTGCTTTTACCTCTGTCTGCCAG  
CCGGAGAGAAGCCCGAGGAGGGAGAGCCTGTGCTCCATGTAGAAGCAGAGCCTGGCTTCACTGCTCGGGA  
CAAGGAAAAGGAGGTCAACCAGGCCAGGGAGACCGTGCAGCTCCCCATCACCAACGGGCCTCAACA  
GTCAGAGTCAACCAGGCCAGGCAGCTGTACATCTCATCCGCACGGGGCATGCAACCTGGCCTCCATG  
AGACCTCGGCTCCACAGCACCTGGTCAACCTGACCATCAGCCTCCACGTGTGGAGGGTGGCGGCACTTC  
TGTATCAAAGAGGTTGTGAGGATGGAATGCCAATCAGCTTCCCGCAGGAGAGGGCTCTGGAGAACA  
GACTTACCTTTGAAACATCTGGGGAGAACACAGCTGTGGCTGCCGTAGAGCCGGCCTGCGGAATCAGC  
CCCCGGTGGACGAAGGAGCCACAGGTGCTTCTCAGAGCCTTTTGGACAGGAAGGAAGTGTGGGAGGTGT  
CATTGCCGGAGGCTGGTGGCCTCATCTTTGCTGTGTGCCTGGTGGCTTTCATGCTGTACCGGATGAAG  
AAGAAGGACGAAGGAAGTACTCCTTGGAGGAGCCAAACAAGCCAATGGCGGTGCTACCAGAAACCA  
CCAAGCAGGAGGAGTTCTACGCC

**ACGCGT**ACGCGGCCGCTCGAGCAGAAACTCATCTCAGAAGAGGATCTGGCAGCAATGATATCCTGGATT  
ACAAGGATGACGACGATAAGGTTTAA



[View online »](#)

**Protein Sequence:** >MR204418 protein sequence  
Red=Cloning site Green=Tags(s)

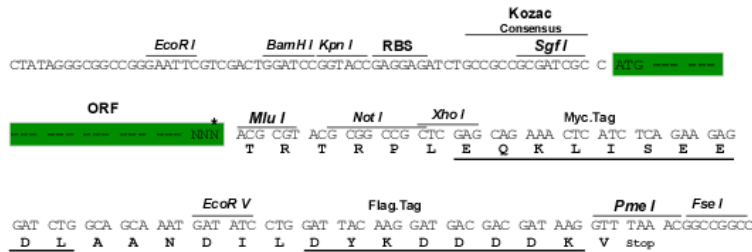
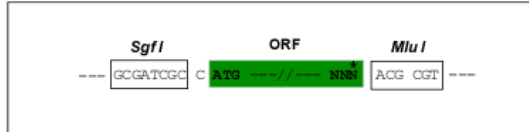
MRRAALWLWLCALALRLQPALPQIVAVNVPPEDQDGSDDSDNFSGSGTGALPDTLSRQTPSTWKDVWLL  
TATPTAPEPTSSNTETAF TSVLPAGEKPEEGEPVLHVEAEPGF TARDKEKEVTTTRPRETVQLPITQRAST  
VRVTTAQAAVTSHPHGGMQPGLHETSAPTAPGQPDHQP RRVVEGGT SVI KEVVEDGTANQLPAGEGSGEQ  
DFTFETSGENTAVAAVEPGLRNQPPVDEGATGASQSL LDRKEVLGGVIAGGLVGLIFAVCLVAFMLYRMK  
KKDEGSYSLEEPKQANGGAYQKPTKQEEFYA

TRTRPLEQKLISEEDLAANDILDYKDDDDKV

**Restriction Sites:** SgfI-MluI

**Cloning Scheme:**

Cloning sites used for ORF Shuttling:



\* The last codon before the Stop codon of the ORF

**ACCN:** NM\_011519

**ORF Size:** 936 bp

**OTI Disclaimer:** The molecular sequence of this clone aligns with the gene accession number as a point of reference only. However, individual transcript sequences of the same gene can differ through naturally occurring variations (e.g. polymorphisms), each with its own valid existence. This clone is substantially in agreement with the reference, but a complete review of all prevailing variants is recommended prior to use. [More info](#)

**OTI Annotation:** This clone was engineered to express the complete ORF with an expression tag. Expression varies depending on the nature of the gene.

**Components:** The ORF clone is ion-exchange column purified and shipped in a 2D barcoded Matrix tube containing 10ug of transfection-ready, dried plasmid DNA (reconstitute with 100 ul of water).

**Reconstitution Method:**

1. Centrifuge at 5,000xg for 5min.
2. Carefully open the tube and add 100ul of sterile water to dissolve the DNA.
3. Close the tube and incubate for 10 minutes at room temperature.
4. Briefly vortex the tube and then do a quick spin (less than 5000xg) to concentrate the liquid at the bottom.
5. Store the suspended plasmid at -20°C. The DNA is stable for at least one year from date of shipping when stored at -20°C.

**RefSeq:** [NM\\_011519.1](#), [NM\\_011519.2](#), [NP\\_035649.1](#)

**RefSeq Size:** 3057 bp

**RefSeq ORF:** 936 bp

**Locus ID:** 20969

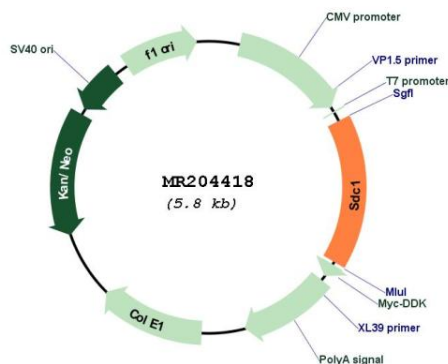
**UniProt ID:** [P18828](#)

**Cytogenetics:** 12 3.94 cM

**MW:** 32.9 kDa

**Gene Summary:** Cell surface proteoglycan that bears both heparan sulfate and chondroitin sulfate and that links the cytoskeleton to the interstitial matrix. Regulates exosome biogenesis in concert with SDCBP and PDCD6IP.[UniProtKB/Swiss-Prot Function]

### Product images:



Circular map for MR204418