

## Product datasheet for MR204416

### Slc25a1 (NM\_153150) Mouse Tagged ORF Clone

#### Product data:

Product Type:	Expression Plasmids
Product Name:	Slc25a1 (NM_153150) Mouse Tagged ORF Clone
Tag:	Myc-DDK
Symbol:	Slc25a1
Synonyms:	1300019P08Rik; 2610100G11Rik; A1194714; Ctp; Dgsj; Slc20a3
Mammalian Cell Selection:	Neomycin
Vector:	pCMV6-Entry (PS100001)
E. coli Selection:	Kanamycin (25 ug/mL)
ORF Nucleotide Sequence:	>MR204416 ORF sequence Red=Cloning site Blue=ORF Green=Tags(s)

TTTTGTAATACGACTCACTATAGGGCGGCCGGAATTCGTCGACTGGATCCGGTACCGAGGAGATCTGCC  
GCC**CGATCGCC**

ATGGCTGCGCCTCGCGGGCCCCGCGCTCTGTGCGCCGCCGCGCGGGTCCGGGAAGCCAAACTGACGC  
ACCCCGGGAAGGCAATCCTAGCAGGCGGCTGGCTGGAGGCATCGAAATCTGCATCACCTCCCGACCGA  
ATACGTGAAGACGCAGCTGCAGCTAGATGAACGAGCGAACCCACCGCGTACCGGGGCATCGGAGACTGC  
GTGCGGCAAACTGTCCGAGCCATGGCGTCTGGGCTGTACCGCGCCTCAGCTCCTTGCTCTACGGCT  
CCATCCCCAAGGCGGCTGTCAGGTTTGGGATGTTGAGTTCCTCAGCAACCACATGCGGGATGCCAAGG  
TAGGCTCGACAGCAGGAGAGGACTATTGTGCGGCTGGGTGCCGCGTGGCAGAAGCAGTGGTAGTCGTG  
TGCCCTATGGAGACCATCAAGGTGAAGTTCATCCATGACCAGACTTCTCCAACCCCAAGTACCGAGGAT  
TTTTCCACGGGGTTAGAGAGATTATTCGGGAACAAGGGCTAAAGGGAACATACCAAGGCCTTACTGCGAC  
TGTAAGCAGGGCTCAAACCAAGCCATCCGATTCTTTGTGATGACCTCCCTACGCAACTGGTACCAA  
GGAGACAACCACAACAACTATGAACCACTGATCACGGGGTCTTTGGAGCTACTGCGGGTGCAGCCA  
GTGTCTTTGGAACACACCTTTGGATGTGATCAAGACCAGGATGCAGGGCCTGGAGGCACACAAATACCG  
GAACACCCTGGACTGCGGCTTGAAGATCCTAAAGAATGAGGGGCCAAAGGCATTCTACAAGGCACCGTT  
CCCCGGCTGGCCGAGTCTGCCTGGATGTGCCATCGTATTCATCATCTACGATGAAGTGGTGAAGCTGC  
TCAATAAAGTGTGAAGACAGAC

**ACGCGT**ACGCGGCCGCTCGAGCAGAAACTCATCTCAGAAGAGGATCTGGCAGCAATGATATCCTGGATT  
ACAAGGATGACGACGATAAGGTTTAA



[View online »](#)

**Protein Sequence:** >MR204416 protein sequence  
 Red=Cloning site Green=Tags(s)

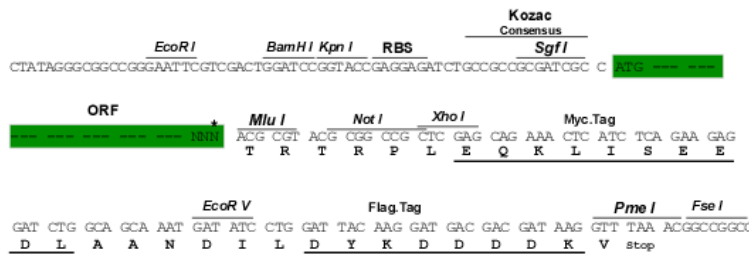
MAAPRGPRLSAAAPGSGKPKLTHPGKAILAGGLAGGIEICITFPTEYVKTLQLDERANPPRYRGIGDC  
 VRQTVRSHGVLGLYRGLSSLLYGSIPKAAVRFGMFEFLSNHMRDAQRLDSRRGLLCGLGAGVAEAVVVV  
 CPMETIKVKFIHDQTSNPKYRFFHGVREIIREQGLKGTYYQLTATVLKQGSNQAIRFFVMTSLRNWYQ  
 GDNHNKPMNPLITGVFGATAGAASVFGNTPLDVIKTRMQGLEAHKYRNTLDCGLKILKNEGPKAFYKGTV  
 PRLGRVCLDVAIVFIIYDEVVKKLNKVKWTD

TRTRPLEQKLISEEDLAANDILDYKDDDDKV

**Restriction Sites:** SgfI-MluI

**Cloning Scheme:**

Cloning sites used for ORF Shuttling:



\* The last codon before the Stop codon of the ORF

**ACCN:** NM\_153150

**ORF Size:** 936 bp

**OTI Disclaimer:** Due to the inherent nature of this plasmid, standard methods to replicate additional amounts of DNA in E. coli are highly likely to result in mutations and/or rearrangements. Therefore, OriGene does not guarantee the capability to replicate this plasmid DNA. Additional amounts of DNA can be purchased from OriGene with batch-specific, full-sequence verification at a reduced cost. Please contact our customer care team at [custsupport@origene.com](mailto:custsupport@origene.com) or by calling 301.340.3188 option 3 for pricing and delivery.

The molecular sequence of this clone aligns with the gene accession number as a point of reference only. However, individual transcript sequences of the same gene can differ through naturally occurring variations (e.g. polymorphisms), each with its own valid existence. This clone is substantially in agreement with the reference, but a complete review of all prevailing variants is recommended prior to use. [More info](#)

**OTI Annotation:** This clone was engineered to express the complete ORF with an expression tag. Expression varies depending on the nature of the gene.

**Components:** The ORF clone is ion-exchange column purified and shipped in a 2D barcoded Matrix tube containing 10ug of transfection-ready, dried plasmid DNA (reconstitute with 100 ul of water).

**Reconstitution Method:**

1. Centrifuge at 5,000xg for 5min.
2. Carefully open the tube and add 100ul of sterile water to dissolve the DNA.
3. Close the tube and incubate for 10 minutes at room temperature.
4. Briefly vortex the tube and then do a quick spin (less than 5000xg) to concentrate the liquid at the bottom.
5. Store the suspended plasmid at -20°C. The DNA is stable for at least one year from date of shipping when stored at -20°C.

**RefSeq:** [NM\\_153150.2](#)

**RefSeq Size:** 1695 bp

**RefSeq ORF:** 936 bp

**Locus ID:** 13358

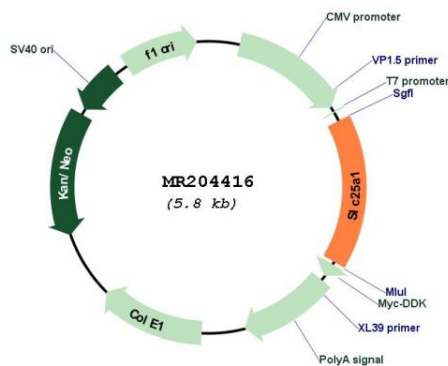
**UniProt ID:** [Q8JZU2](#)

**Cytogenetics:** 16 11.11 cM

**MW:** 33.9 kDa

**Gene Summary:** Citrate transporter that mediates the exchange of mitochondrial citrate for cytosolic malate. Also able to mediate the exchange of citrate for isocitrate, phosphoenolpyruvate, cis- but not trans-aconitate and to a lesser extend maleate and succinate. Important for the bioenergetics of hepatic cells as it provides a carbon source for fatty acid and sterol biosyntheses, and NAD(+) for the glycolytic pathway. Required for proper neuromuscular junction formation. [UniProtKB/Swiss-Prot Function]

**Product images:**



Circular map for MR204416