

## Product datasheet for MR204384

### PPP2CA (NM\_019411) Mouse Tagged ORF Clone

#### Product data:

Product Type:	Expression Plasmids
Product Name:	PPP2CA (NM_019411) Mouse Tagged ORF Clone
Tag:	Myc-DDK
Symbol:	PPP2CA
Synonyms:	PP2A; R75353
Mammalian Cell Selection:	Neomycin
Vector:	pCMV6-Entry (PS100001)
E. coli Selection:	Kanamycin (25 ug/mL)
ORF Nucleotide Sequence:	>MR204384 representing NM_019411 Red=Cloning site Blue=ORF Green=Tags(s)

TTTTGTAATACGACTCACTATAGGGCGGCCGGAATTCGTCGACTGGATCCGGTACCGAGGAGATCTGCCGCCGCGATCGCC

ATGGACGAGAAGTTGTTACCAAGGAGCTGGACCAGTGGATCGAGCAGCTGAACGAGTGAAGCAGCTCTCCGAGTCCCAGGTCAAGAGCCTCTGCGAGAAGGCTAAAGAAATCCTGACAAAAGAATCCAACGTTCAAGAGGTTCCGATGTCCAGTCACTGTGTGGAGATGTACATGGGCAATTCATGATCTCATGGAACCTTTAGATTGGTGGTAAATCACCAGATACAAATTACCTGTTTATGGGAGACTATGTGGACAGAGGATATTACTCTGTGAAACAGTTACTACTGCTTGTAGCTCTTAAGGTTCTACCGAGAGCGCATACCATACTCCGAGGGAAACACGAGAGCAGACAGATCACACAGTTTATGGGTTCTACGACGAGTGTAAAGGAAATACGGAAATGCAATGTTTTGGAAATACTTCACAGACCTTTTTGACTATCTTCTCTCACTGCCTTGGTGGATGGGCAGATCTCTGTCTACACGGTGGTCTGTCCACCATCCATAGACACACTGGATCACATCCGAGCACTCGATCGCCTACAGGAAGTTCCTCATGAGGGTCCAATGTGTGACTTGTGTGGTCCAGATGACCGTGGTGGTGGGGATATCTCTCGGGGAGCTGGTTATACCTTTGGCCAAGATATTTCTGAGACATTTAATCATGCCAATGGCCACAGTGGTGTCCAGAGCTCACCAGCTGGTGTGGAGGGATATAACTGGTGCCATGACCGGAACGTAGTAACAATTTTCAGTGCTCCAACTATTGCTATCGTTGTGGTAACCAAGCTGCAATCATGGAACCTTGACGACACTCTTAAGTATCTTTTTCAGTTTGACCCAGCACCTCGTAGAGGCGAGCCACATGTCACTCGTCGTAACCCAGACTACTTCTCTG

ACGCGTACGCGGCCGCTCGAGCAGAACTCATCTCAGAAGAGGATCTGGCAGCAAATGATATCTGGATTACAAGGATGACGACGATAAGGTTTAA



[View online »](#)

**Protein Sequence:** >MR204384 representing NM\_019411  
 Red=Cloning site Green=Tags(s)

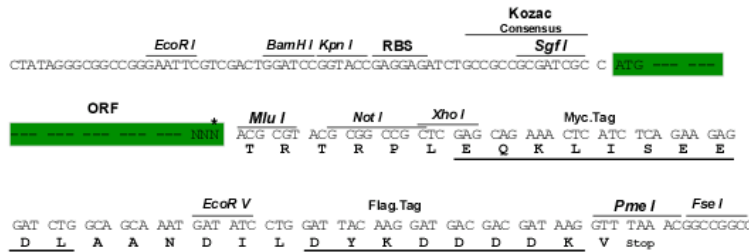
MDEKLFTEKELDQWIEQLNECKQLSESQVKSLCEKAKEILTKESNVQEVRCPVTVCGDVHGQFHDLMELEFR  
 IGKSPDNTYLFMGDYVDRGYYSVETVLLVALKVRYRERITILRGNHESRQITQVYGFYDECLRKYGNA  
 NVWKYFTDLFDYLPLTALVDGQIFCLHGGLSPSIDTLDIRALDRLQVEPHEGPMCDLLWSDPDRGGWG  
 ISPRGAGYTFGQDISETFNHANGTLVSRHQQLVMEGYNWCHDRNVVTFISAPNYCYRCGNQAAIMELDD  
 TLKYSFLQFDPAPRRGEPHVTRTRTPDYFL

TRTRPLEQKLISEEDLAANDILDYKDDDDKV

**Restriction Sites:** SgfI-MluI

**Cloning Scheme:**

Cloning sites used for ORF Shuttling:



\* The last codon before the Stop codon of the ORF

**ACCN:** NM\_019411

**ORF Size:** 927 bp

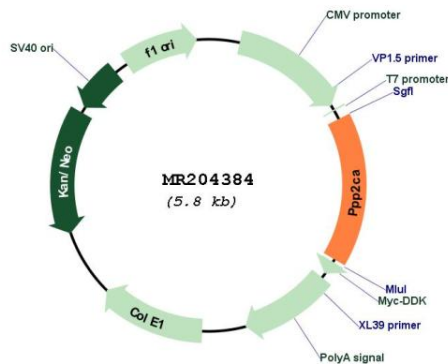
**OTI Disclaimer:** Due to the inherent nature of this plasmid, standard methods to replicate additional amounts of DNA in E. coli are highly likely to result in mutations and/or rearrangements. Therefore, OriGene does not guarantee the capability to replicate this plasmid DNA. Additional amounts of DNA can be purchased from OriGene with batch-specific, full-sequence verification at a reduced cost. Please contact our customer care team at [custsupport@origene.com](mailto:custsupport@origene.com) or by calling 301.340.3188 option 3 for pricing and delivery.

The molecular sequence of this clone aligns with the gene accession number as a point of reference only. However, individual transcript sequences of the same gene can differ through naturally occurring variations (e.g. polymorphisms), each with its own valid existence. This clone is substantially in agreement with the reference, but a complete review of all prevailing variants is recommended prior to use. [More info](#)

**OTI Annotation:** This clone was engineered to express the complete ORF with an expression tag. Expression varies depending on the nature of the gene.

<b>Components:</b>	The ORF clone is ion-exchange column purified and shipped in a 2D barcoded Matrix tube containing 10ug of transfection-ready, dried plasmid DNA (reconstitute with 100 ul of water).
<b>Reconstitution Method:</b>	<ol style="list-style-type: none"> <li>1. Centrifuge at 5,000xg for 5min.</li> <li>2. Carefully open the tube and add 100ul of sterile water to dissolve the DNA.</li> <li>3. Close the tube and incubate for 10 minutes at room temperature.</li> <li>4. Briefly vortex the tube and then do a quick spin (less than 5000xg) to concentrate the liquid at the bottom.</li> <li>5. Store the suspended plasmid at -20°C. The DNA is stable for at least one year from date of shipping when stored at -20°C.</li> </ol>
<b>RefSeq:</b>	<u>NM_019411.4, NP_062284.1</u>
<b>RefSeq Size:</b>	1930 bp
<b>RefSeq ORF:</b>	930 bp
<b>Locus ID:</b>	19052
<b>UniProt ID:</b>	<u>P63330</u>
<b>Cytogenetics:</b>	11 B1.3
<b>MW:</b>	36.1 kDa
<b>Gene Summary:</b>	PP2A is the major phosphatase for microtubule-associated proteins (MAPs). PP2A can modulate the activity of phosphorylase B kinase casein kinase 2, mitogen-stimulated S6 kinase, and MAP-2 kinase. Cooperates with SGO2 to protect centromeric cohesin from separase-mediated cleavage in oocytes specifically during meiosis I. Activates RAF1 by dephosphorylating it at 'Ser-259' (By similarity).[UniProtKB/Swiss-Prot Function]

**Product images:**



Circular map for MR204384