

## Product datasheet for MR204383

### Marcks (NM\_008538) Mouse Tagged ORF Clone

#### Product data:

Product Type: Expression Plasmids  
 Product Name: Marcks (NM\_008538) Mouse Tagged ORF Clone  
 Tag: Myc-DDK  
 Symbol: Marcks  
 Synonyms: Macs; PKCSL  
 Mammalian Cell Selection: Neomycin  
 Vector: pCMV6-Entry (PS100001)  
 E. coli Selection: Kanamycin (25 ug/mL)  
 ORF Nucleotide Sequence: >MR204383 representing NM\_008538  
 Red=Cloning site Blue=ORF Green=Tags(s)

TTTTGTAATACGACTCACTATAGGGCGCCGGGAATTCGTCGACTGGATCCGGTACCGAGGAGATCTGCC  
 GCCCGCATCGCC

ATGGGTGCCAGTTCTCCAAGACCCGAGCGAAGGGAGAAGCCACCGCCGAGAGGCCCGGGAGGCGGCTG  
 TGGCCTCGTCGCCTTCAAAGCAAATGGGCAGGAGAATGGCCACGTAAAAGTGAACGGGGACGCGTCTCC  
 CGCCGCCCGGAGCCGGGCGCAAGGAGGAGCTGCAAGCCAACGGCAGCGCCCGGCCGACAAAGGAG  
 GAGCCCGGAGCGGCAGTGCCGCGACCCCGCCGCGCCGAAAAGGATGAGGCTGCCGCGCCACCGAGC  
 CGGGCGCCGGCGGCGGACAAGGAGGCTGCGGAGGCCGAGCCCGCCGAGCCAGCTCCCGGCCGCGGA  
 GGCCGAGGGCGCTCCGCTCCTCCACGTCGTCGCCAAGGCGGAGGACGGGGCCGCGCCGTCGCCAGC  
 AGCGAGACCCGAAAAAAAAAAGAAGCGCTTTTCTTCAAGAAGTCTTCAAGCTGAGCGGCTTCTCT  
 TCAAGAAGAGCAAGAAGGAGTCGGGCGAGGGCGCTGAAGCAGAGGGAGCGACCGCGGAAGGCGCAAAGGA  
 CGAGGCTGCAGCCGACGCGGGCGGCGAGGGGGCCGCGCCCGGGGAGCAGGCAGGCGGGGCGGGCGCC  
 GAGGGCGCGGGCGGAGAGCCCGGGAGGCCGAGGCGGCGGAGCCGAGCAGCCGAGCAGCCGAGC  
 AGCCCGCGGGGAGGAGCCGAGCGGAGGAGCAGTCGGAGGCGGGGAGAAAGCGGAGGAGCCCGC  
 GCCCGGCCACCGCGGGCGATGCGTCTCCGCCGAGGGCTGAGCAGGAGCGCCCGTGCACCCGAC  
 GAGGCCGCGGCGTCCGACGCCCGCGCGTCCCGGAGCCGAGCCGAGTGCAGTCCGGAGGCCCGCC  
 CGCGCCAACGGCCGAG

AGCGGACCGACGCGTACGCGGCCGCTCGAGCAGAACTCATCTCAGAAGAGGATCTGGCAGCAAATGATATCC  
 TGGATTACAAGGATGACGACGATAAGGTTTAA



[View online »](#)

Protein Sequence: >MR204383 representing NM\_008538  
 Red=Cloning site Green=Tags(s)

MGAQFSKTAAKGEATAERPGEAAVASSPSKANGQENGVKVNVDASPAAEPGAKEELQANGSAPAADKE  
 EPASGSAATPAAAEKDEAAAATEPGAGAADKEAAEAEPSPAAEAEGASASSTSSPKAEDGAAPSPS  
 SETPKKKKRFKFKSFKL SGFSFKKSKKESGEGAEAGATAEGAKDEAAAAAGGEGAAAPGEQAGGAGA  
 EGAAGGEPREAAEAPEQPEQPEQPAEEQAEQSEAAGEKAEEPAPGATAGDASSAAGPEQEAATD  
 EAAASAAPAASPEPQPECSPEAPPAPTAE

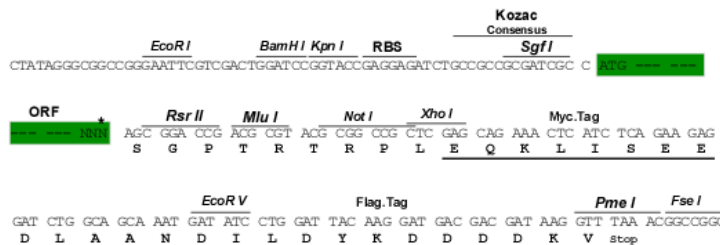
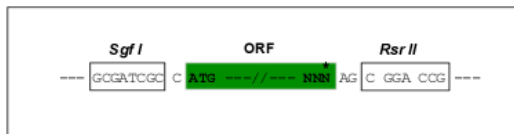
SGP TRTRPLEQKLI SEEDLAANDILDYKDDDDKV

Chromatograms: [https://cdn.origene.com/chromatograms/mm9034\\_c02.zip](https://cdn.origene.com/chromatograms/mm9034_c02.zip)

Restriction Sites: SgfI-RsrII

Cloning Scheme:

Cloning sites used for ORF Shuttling:



\* The last codon before the Stop codon of the ORF

ACCN: NM\_008538

ORF Size: 927 bp

OTI Disclaimer: The molecular sequence of this clone aligns with the gene accession number as a point of reference only. However, individual transcript sequences of the same gene can differ through naturally occurring variations (e.g. polymorphisms), each with its own valid existence. This clone is substantially in agreement with the reference, but a complete review of all prevailing variants is recommended prior to use. [More info](#)

OTI Annotation: This clone was engineered to express the complete ORF with an expression tag. Expression varies depending on the nature of the gene.

Components: The ORF clone is ion-exchange column purified and shipped in a 2D barcoded Matrix tube containing 10ug of transfection-ready, dried plasmid DNA (reconstitute with 100 ul of water).

**Reconstitution Method:**

1. Centrifuge at 5,000xg for 5min.
2. Carefully open the tube and add 100ul of sterile water to dissolve the DNA.
3. Close the tube and incubate for 10 minutes at room temperature.
4. Briefly vortex the tube and then do a quick spin (less than 5000xg) to concentrate the liquid at the bottom.
5. Store the suspended plasmid at -20°C. The DNA is stable for at least one year from date of shipping when stored at -20°C.

**RefSeq:** [NM\\_008538.2](#), [NP\\_032564.1](#)

**RefSeq Size:** 4186 bp

**RefSeq ORF:** 930 bp

**Locus ID:** 17118

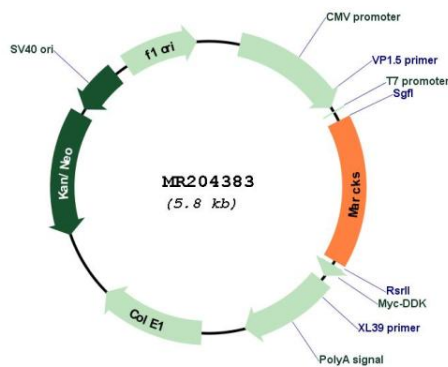
**UniProt ID:** [P26645](#)

**Cytogenetics:** 10 19.49 cM

**MW:** 30.1 kDa

**Gene Summary:** MARCKS is the most prominent cellular substrate for protein kinase C. This protein binds calmodulin, actin, and synapsin. MARCKS is a filamentous (F) actin cross-linking protein. [UniProtKB/Swiss-Prot Function]

### Product images:



Circular map for MR204383