

## Product datasheet for MR204360

### Bpnt1 (NM\_011794) Mouse Tagged ORF Clone

#### Product data:

Product Type:	Expression Plasmids
Product Name:	Bpnt1 (NM_011794) Mouse Tagged ORF Clone
Tag:	Myc-DDK
Symbol:	Bpnt1
Synonyms:	BPntase
Mammalian Cell Selection:	Neomycin
Vector:	pCMV6-Entry (PS100001)
E. coli Selection:	Kanamycin (25 ug/mL)
ORF Nucleotide Sequence:	>MR204360 ORF sequence Red=Cloning site Blue=ORF Green=Tags(s)

TTTTGTAATACGACTCACTATAGGGCGGCCGGAATTCGTCGACTGGATCCGGTACCGAGGAGATCTGCC  
GCC**CGATCGCC**

ATGGCTTCCAGCCACACCGTGTTGATGCGGCTGGTAGCTTCAGCATATTCTATCGCTCAAAGGCAGGAA  
CCATAGTCAGGTGTGTCATTGCTGAAGGAGACCTGGGCATCGTGCAGAAGACCTCGGCCACCGACCTGCA  
GACCAAAGCTGACCGCTTGGTGCAGATGAGCATATGCTCTTCCCTGGCCCGGAAGTTCCCGAAGCTGACC  
ATCATAGGGGAAGAGGACCTGCCTCCTGGGAAGTGGATCAAGAGCTGATTGAAGACGGCAGTGGGAGG  
AGATCCTGAAGCAGCCGTGCCCTCGCAGTACAGTGCATCAAGGAGGAAGACCTTGTGGTTTGGGTTGA  
CCCTTAGATGGCACCAAGGAGTACACTGAAGTCTTCTTGACAATGTAACAGTTCTATTGGGATTGCT  
TATGAAGGAAAGGCCATCGCAGGCATCATCAACCAGCCGTATTACAACCTACCAGGCAGGACCCGACGCGG  
TGCTGGGCAGGACCATCTGGGGAGTTCTGGGTTTGGGTGCTTTTGGGTTTCAGCTGAAGGAAGCCCTGC  
CGGGAAGCGCATTATCACAACCACAGATCCCATAGCAACCAGCTGGTCACAGACTGCATTTCCGCCATG  
AACCCCGACACCGTGTGCGAGTGGGAGGAGCAGGAAACAAGATTATCCAGCTGATCGAAGGCAAAGCTT  
CTGCCTATGTGTTTGAAGTCTGGGTGTAAGAAGTGGGACACTGTGCCCCAGAAGTTATCTTGATGC  
TGTGGGAGGGAAGTTGACAGACATCCATGGGAATGCCCTGCAGTACAACAAGGAGGTGAAACATATGAAC  
TCTGCCGTGCTCCTGGTGCAGTACGAGTACTATGCAAGCCATGTTCCAGAGTCCGTTCAAAA  
ATGCGCTATTCCA

**ACGCGT**ACGCGGCCGCTCGAGCAGAAACTCATCTCAGAAGAGGATCTGGCAGCAAATGATATCCTGGATT  
ACAAGGATGACGACGATAAGGTTTAA



[View online »](#)

**Protein Sequence:** >MR204360 protein sequence  
Red=Cloning site Green=Tags(s)

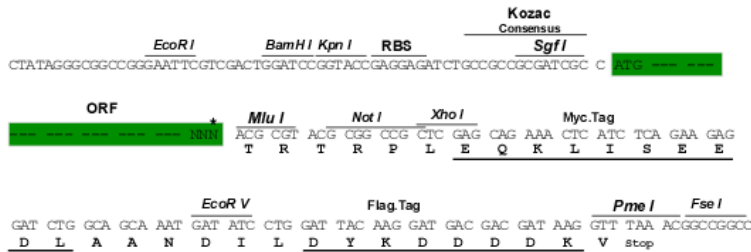
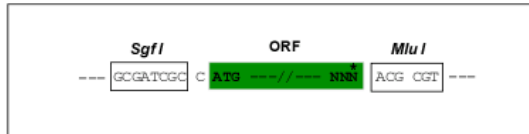
MASSHTVLMRLVASAYSIAQKAGTIVRCVIAEGDLGIVQKTSATDLQTKADRLVQMSICSSLARKFPKLT  
 IIGEDLPPGEVDQELIEDGQWEEILKQPCPSQYSAIKEEDLVVWVDPLDGTKEYTEGLLDNVTVLIGIA  
 YEGKAIAGIINQPYNYQAGPDAVLGRTIWVGLGLGAFGFQLKEAPAGKRIITTTTRSHSNQLVTDCISAM  
 NPDTVLRVGGAGNKIIQLIEGKASAYVFASPGCKKWDCAPEVILHAVGGKLTDIHGNAIQYNKEVKHMN  
 SAGVLAALRNIEYASHVPESVKNALIP

TRTRPLEQKLISEEDLAANDILDYKDDDDKV

**Restriction Sites:** SgfI-MluI

**Cloning Scheme:**

Cloning sites used for ORF Shuttling:



\* The last codon before the Stop codon of the ORF

**ACCN:** NM\_011794

**ORF Size:** 927 bp

**OTI Disclaimer:** The molecular sequence of this clone aligns with the gene accession number as a point of reference only. However, individual transcript sequences of the same gene can differ through naturally occurring variations (e.g. polymorphisms), each with its own valid existence. This clone is substantially in agreement with the reference, but a complete review of all prevailing variants is recommended prior to use. [More info](#)

**OTI Annotation:** This clone was engineered to express the complete ORF with an expression tag. Expression varies depending on the nature of the gene.

**Components:** The ORF clone is ion-exchange column purified and shipped in a 2D barcoded Matrix tube containing 10ug of transfection-ready, dried plasmid DNA (reconstitute with 100 ul of water).

**Reconstitution Method:**

1. Centrifuge at 5,000xg for 5min.
2. Carefully open the tube and add 100ul of sterile water to dissolve the DNA.
3. Close the tube and incubate for 10 minutes at room temperature.
4. Briefly vortex the tube and then do a quick spin (less than 5000xg) to concentrate the liquid at the bottom.
5. Store the suspended plasmid at -20°C. The DNA is stable for at least one year from date of shipping when stored at -20°C.

**RefSeq:** [NM\\_011794.1](#), [NM\\_011794.2](#), [NM\\_011794.3](#), [NP\\_035924.2](#)

**RefSeq Size:** 2182 bp

**RefSeq ORF:** 927 bp

**Locus ID:** 23827

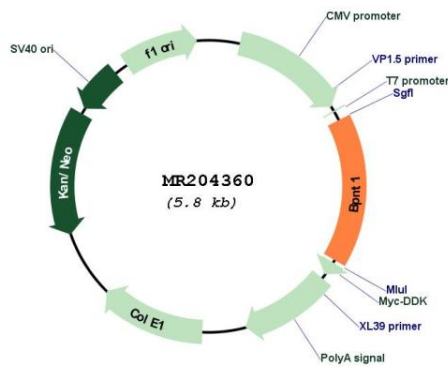
**UniProt ID:** [Q9Z0S1](#)

**Cytogenetics:** 1 H5

**MW:** 33.2 kDa

**Gene Summary:** Converts adenosine 3'-phosphate 5'-phosphosulfate (PAPS) to adenosine 5'-phosphosulfate (APS) and 3'(2')-phosphoadenosine 5'- phosphate (PAP) to AMP. Has 1000-fold lower activity towards inositol 1,4-bisphosphate (Ins(1,4)P2) and inositol 1,3,4-trisphosphate (Ins(1,3,4)P3), but does not hydrolyze Ins(1)P, Ins(3,4)P2, Ins(1,3,4,5)P4 or InsP6.[UniProtKB/Swiss-Prot Function]

### Product images:



Circular map for MR204360