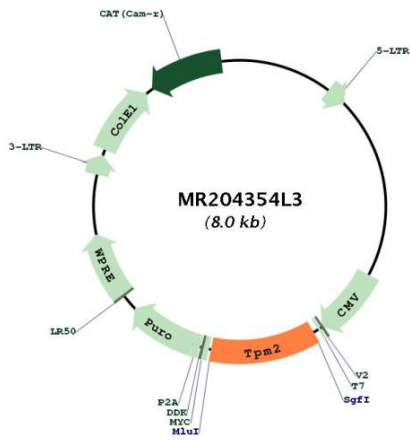




<b>OTI Disclaimer:</b>	The molecular sequence of this clone aligns with the gene accession number as a point of reference only. However, individual transcript sequences of the same gene can differ through naturally occurring variations (e.g. polymorphisms), each with its own valid existence. This clone is substantially in agreement with the reference, but a complete review of all prevailing variants is recommended prior to use. <a href="#">More info</a>
<b>OTI Annotation:</b>	This clone was engineered to express the complete ORF with an expression tag. Expression varies depending on the nature of the gene.
<b>Components:</b>	The ORF clone is ion-exchange column purified and shipped in a 2D barcoded Matrix tube containing 10ug of transfection-ready, dried plasmid DNA (reconstitute with 100 ul of water).
<b>Reconstitution Method:</b>	<ol style="list-style-type: none"> <li>1. Centrifuge at 5,000xg for 5min.</li> <li>2. Carefully open the tube and add 100ul of sterile water to dissolve the DNA.</li> <li>3. Close the tube and incubate for 10 minutes at room temperature.</li> <li>4. Briefly vortex the tube and then do a quick spin (less than 5000xg) to concentrate the liquid at the bottom.</li> <li>5. Store the suspended plasmid at -20°C. The DNA is stable for at least one year from date of shipping when stored at -20°C.</li> </ol>
<b>RefSeq:</b>	<a href="#">BC014809</a> , <a href="#">AAH14809</a>
<b>RefSeq Size:</b>	1561 bp
<b>RefSeq ORF:</b>	926 bp
<b>Locus ID:</b>	22004
<b>Cytogenetics:</b>	4 A5
<b>Gene Summary:</b>	This gene belongs to the tropomyosin family which encodes proteins that bind to actin filaments and stabilize them by regulating access to actin modifying proteins. The encoded protein is a high molecular weight tropomyosin expressed in slow skeletal muscle. In humans, mutations in this gene are associated with nemaline myopathy, cap disease and distal arthrogryposis syndromes. Alternative splicing of this gene results in multiple transcript variants encoding different isoforms. [provided by RefSeq, Apr 2013]

Product images:



Circular map for MR204354L3