

Product datasheet for MR204346

Cabcoco1 (NM_028491) Mouse Tagged ORF Clone

Product data:

Product Type:	Expression Plasmids
Product Name:	Cabcoco1 (NM_028491) Mouse Tagged ORF Clone
Tag:	Myc-DDK
Symbol:	Cabcoco1
Synonyms:	1700040L02Rik
Mammalian Cell Selection:	Neomycin
Vector:	pCMV6-Entry (PS100001)
E. coli Selection:	Kanamycin (25 ug/mL)
ORF Nucleotide Sequence:	>MR204346 ORF sequence Red=Cloning site Blue=ORF Green=Tags(s)

TTTTGTAATACGACTCACTATAGGGCGGCCGGAATTCGTCGACTGGATCCGGTACCGAGGAGATCTGCC
GCC**CGATCGCC**

ATGAAGGCTGCTTCTCTAAAGAAAACGTGTCAGGGTCGTCCACAGGATTGACCTCCTGGGCGTTGACCA
CCCCTGGGGTGTGCGCCAGTAGGCAGCACTTCTGACTCTGAGGAGAATGAAAGGATTCTGTCTCCAGATAT
ACTCTCTCTGACCAGATCATTGACCTGTTGGGAGAAGAGAACGAAAATGGAATTAAGAAAACTGGGA
GTGTTTCTGAATTTAAAAATCTCCAGACTTGCCTGCGTGACGCCATCCTTTGGACTACTATGTGTCTG
GCTTCTGTTGGCCAAGGAGATGAACTTTTCTATTGAGCAGTATTCGAAGTTTATGACCTTGTGGACAT
GCTACTTCATAATCTTCAAACACTGCACATGTCCTTAGAGGACAGCATTAAAGTGGCTCGGGGAAGTGATG
GCAGAAATCGGACCAAACCACTCGCAGAAGAGTGAAGATTTCCATGTCTTCGAAGTCAAGGAAGCCAACG
CCATCATCGATTACTTAAAAATCAGCTTATTCCAGCACTACAGGCTCTACGAGTTTCTGTCTACTCCAC
CAGGGAAGAAATTGTCATCGGGACTGAGCAAACCATAGAGGTTGTCAAGCCTGCAGACTACCCCTTCCCA
GCCCCCTGGAAGAAGGTATCTCATTGGACACGTATTCAACCTTCATAGAGCCATTGCCAACGCCGGACA
TGAACAGAAGGTGCTGGATCAAGAGCAAGGGACTCAGGAAGCCCTGCTGGAGAGTGAATGAGAGAGGA
GGATCCCTTAGGTGGCTTCAACATTGATGACGTAATAATCAGCCCTGGAGCGAGTGACGGATGAGGTTTTG
ATTAGCATGCAGAAAGAGATAAGTGAATAACTCCAAGTACAGGAAGAGGCCTTTAACGCACGAATAGAGA
AACTGAAGAAAGCC

ACGCGTACGCGGCCGCTCGAGCAGAAACTCATCTCAGAAGAGGATCTGGCAGCAATGATATCCTGGATT
ACAAGGATGACGACGATAAGGTTTAA



[View online »](#)

Protein Sequence: >MR204346 protein sequence
Red=Cloning site Green=Tags(s)

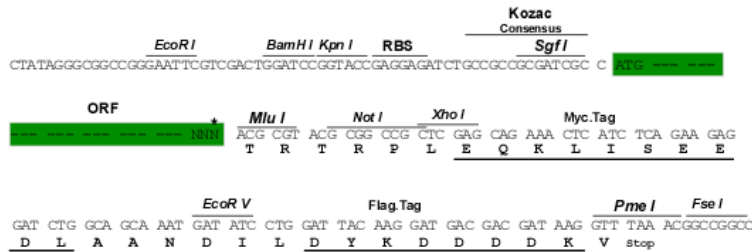
MKAASSKENVSGSSTGLTSWALTPGVSPVGSTSDSEENERILSPDILSSDQIIDLLGEENENGIQEKLG
 VFLNFKNLQTCCLRDAILLDYYVSGFCWAKEMNFSIEQYSKFMILLDMLLHNLQTLHMSLEDSIKWLG EVM
 AEIGPNHSQKSEDFHFVEVKEANAIIIDYLIKISLFQHYRLYEFLFYSTREEIVIGTEQTIIEVVKPADYPPF
 APLEEGISLDTYSTFIEPLPTDMEQKVL DQEQTQEALLESEMREEDPLGGFTIDDVKSALERV TDEVL
 ISMQKEISEKLQVQEAFNARIEKLKKA

TRTRPLEQKLISEEDLAANDILDYKDDDDKV

Restriction Sites: SgfI-MluI

Cloning Scheme:

Cloning sites used for ORF Shuttling:



* The last codon before the Stop codon of the ORF

ACCN: NM_028491

ORF Size: 927 bp

OTI Disclaimer: The molecular sequence of this clone aligns with the gene accession number as a point of reference only. However, individual transcript sequences of the same gene can differ through naturally occurring variations (e.g. polymorphisms), each with its own valid existence. This clone is substantially in agreement with the reference, but a complete review of all prevailing variants is recommended prior to use. [More info](#)

OTI Annotation: This clone was engineered to express the complete ORF with an expression tag. Expression varies depending on the nature of the gene.

Components: The ORF clone is ion-exchange column purified and shipped in a 2D barcoded Matrix tube containing 10ug of transfection-ready, dried plasmid DNA (reconstitute with 100 ul of water).

Reconstitution Method:

1. Centrifuge at 5,000xg for 5min.
2. Carefully open the tube and add 100ul of sterile water to dissolve the DNA.
3. Close the tube and incubate for 10 minutes at room temperature.
4. Briefly vortex the tube and then do a quick spin (less than 5000xg) to concentrate the liquid at the bottom.
5. Store the suspended plasmid at -20°C. The DNA is stable for at least one year from date of shipping when stored at -20°C.

Note: Plasmids are not sterile. For experiments where strict sterility is required, filtration with 0.22um filter is required.

RefSeq: [NM_028491.1](#), [NP_082767.1](#)

RefSeq Size: 1238 bp

RefSeq ORF: 927 bp

Locus ID: 73287

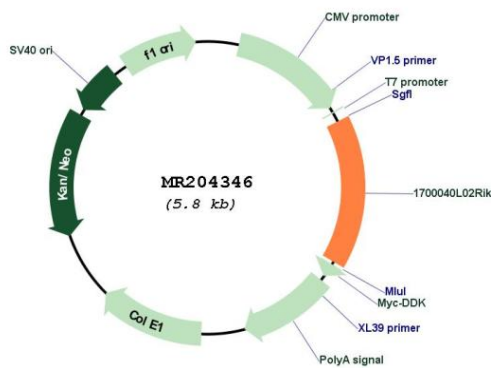
UniProt ID: [Q8CDT7](#)

Cytogenetics: 10 B5.2

MW: 34.9 kDa

Gene Summary: Calcium-binding protein (PubMed:26990073). May be involved in the control of sperm flagellar movement (PubMed:26990073).[UniProtKB/Swiss-Prot Function]

Product images:



Circular map for MR204346