

Product datasheet for MR204332

Wdfy1 (BC025226) Mouse Tagged ORF Clone

Product data:

Product Type:	Expression Plasmids
Product Name:	Wdfy1 (BC025226) Mouse Tagged ORF Clone
Tag:	Myc-DDK
Symbol:	Wdfy1
Synonyms:	1700120F24Rik, WDF1, FENS-1, Jr1, ZFYVE17
Mammalian Cell Selection:	Neomycin
Vector:	pCMV6-Entry (PS100001)
E. coli Selection:	Kanamycin (25 ug/mL)
ORF Nucleotide Sequence:	>MR204332 ORF sequence Red=Cloning site Blue=ORF Green=Tags(s)

TTTTGTAATACGACTCACTATAGGGCGGCCGGAATTCGTCGACTGGATCCGGTACCGAGGAGATCTGCC
GCC**CGATCGCC**

ATGAATTTTATCAAGACCTATCCAGCCCACCAGAACCGCGTGTCTGCTATCATCTTCAGCCTGTCTGCCG
AGTGGGTGATCAGCACTGGCCACGACAAGTGTGTGAGCTGGATGTGCACGCGCAGCGGGAATATGCTTGG
CCGCCACTTCTTCTCGTCGTGGCTTCTGTTTGCAGTATGATCTGGCACTCAGCACGCCTTTGTTGGC
GATTACTCGGGACAGATCACCTGCTGAAGCTGGAGCAGAACACTTGTTCACTTATCACGACCTCAAGG
GACATGAAGGTAGCATCGCTGCCTTTGGTGGGACCCTATCCAACGGTACTCTTCTCGGGAGCATCCGA
CAACAGCGTCATCATGTGGGACATCGGGGACGAAAGGCCGGACTCCTCCTTCAAGGCCACCATGAC
AGAGTGCAGTCACTGTGCTACCTGCAGCTCACGAGGCAGCTCGTCTCTGCTCGGAGATGGTGGCATTG
CAGTGTGGAACATGGATGTTAGCAGAGAAGAGGCTCCTCAGTGGTTAGAAAGCGACTCCTGTGAGAAGTG
TGAGCAGCCCTTCTTCTGGAATAAAAACAGATGTGGGACACAAAGACCCTGGGCTTGAGGCAGCATCAC
TGCAGGAAGTGTGGGACGGCTGTGGGAAGTGCAGCAGCAAGCGGTCCAGTTACCCCGTCATGGGTT
TTGAGTTCAGGTTTCGAGTTTGTGATTCCTGTTACGACTCCATCAAAGATGAGGACCGGACTTCTTAGC
AACATTTTCATGAAGGAAAACATAACATTTCCCATATGTCCATGGACATTGCAAGGGGACTGATGGTGACC
TGTGGGACAGATCGTGTGTGAAGATATGGGATATGACTCCTGTGGTGGGCTGCAGCCTGGCAACTGGAT
TTTCTCCACAC

ACGCGTACGCGGCCGCTCGAGCAGAACTCATCTCAGAAGAGGATCTGGCAGCAATGATATCCTGGATT
ACAAGGATGACGACGATAAGGTTTAA



[View online »](#)

Protein Sequence: >MR204332 protein sequence
Red=Cloning site Green=Tags(s)

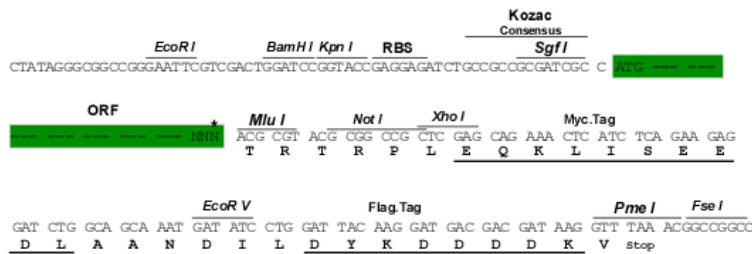
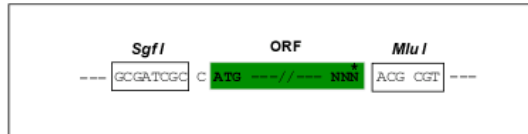
MNFIKTYPAHQNRVSAIIFSLSAEWVISTGHDKCVSWMCTRSGNMLGRHFFSSWASCLQYDLDTQHAFVG
 DYSGQITLLKLEQNTCSVITTLKGHEGSIACLWWDPIQRLLFSGASDNSVIMWDIGGRKGRLLLLQGHH
 RVQSLCYLQLTRQLVSCSADGGIAVWNMDVSREEAPQWLESQCKCEQPFWNKQMWDTKTLGLRQHH
 CRKCGQAVCGKCSSKRSSYPVMGFQVQRVCDSCYDSIKDEDRTSLATFHEGKHNI SHMSMDIARGLMVT
 CGTDRVVKIWDMPVVGCSLATGFSPH

TRTRPLEQKLISEEDLAANDILDYKDDDDKV

Restriction Sites: SgfI-MluI

Cloning Scheme:

Cloning sites used for ORF Shuttling:



* The last codon before the Stop codon of the ORF

ACCN: BC025226

ORF Size: 921 bp

OTI Disclaimer: The molecular sequence of this clone aligns with the gene accession number as a point of reference only. However, individual transcript sequences of the same gene can differ through naturally occurring variations (e.g. polymorphisms), each with its own valid existence. This clone is substantially in agreement with the reference, but a complete review of all prevailing variants is recommended prior to use. [More info](#)

OTI Annotation: This clone was engineered to express the complete ORF with an expression tag. Expression varies depending on the nature of the gene.

Components: The ORF clone is ion-exchange column purified and shipped in a 2D barcoded Matrix tube containing 10ug of transfection-ready, dried plasmid DNA (reconstitute with 100 ul of water).

Reconstitution Method:

1. Centrifuge at 5,000xg for 5min.
2. Carefully open the tube and add 100ul of sterile water to dissolve the DNA.
3. Close the tube and incubate for 10 minutes at room temperature.
4. Briefly vortex the tube and then do a quick spin (less than 5000xg) to concentrate the liquid at the bottom.
5. Store the suspended plasmid at -20°C. The DNA is stable for at least one year from date of shipping when stored at -20°C.

RefSeq: [BC025226](#), [AAH25226](#)

RefSeq Size: 1363 bp

RefSeq ORF: 923 bp

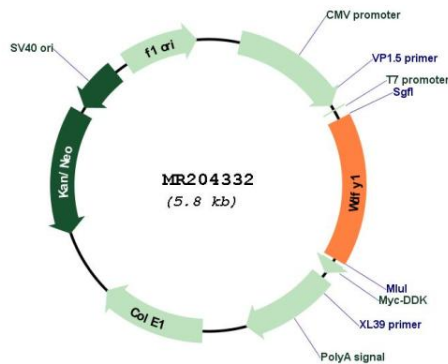
Locus ID: 69368

Cytogenetics: 1 C4

MW: 34.7 kDa

Gene Summary: Positively regulates TLR3- and TLR4-mediated signaling pathways by bridging the interaction between TLR3 or TLR4 and TICAM1. Promotes TLR3/4 ligand-induced activation of transcription factors IRF3 and NF-kappa-B, as well as the production of IFN-beta and inflammatory cytokines (PubMed:25736436).[UniProtKB/Swiss-Prot Function]

Product images:



Circular map for MR204332