

Product datasheet for MR204312

U2af2 (NM_133671) Mouse Tagged ORF Clone

Product data:

Product Type:	Expression Plasmids
Product Name:	U2af2 (NM_133671) Mouse Tagged ORF Clone
Tag:	Myc-DDK
Symbol:	U2af2
Synonyms:	65kDa
Mammalian Cell Selection:	Neomycin
Vector:	pCMV6-Entry (PS100001)
E. coli Selection:	Kanamycin (25 ug/mL)
ORF Nucleotide Sequence:	>MR204312 ORF sequence Red=Cloning site Blue=ORF Green=Tags(s)

TTTTGTAATACGACTCACTATAGGGCGCCGGGAATTCGTCGACTGGATCCGGTACCGAGGAGATCTGCC
GCC**CGATCGCC**

ATGGACTTCTTCAACGCCAGATGCGCTTGGGAGGTTGACTCAGGCCCTGGCAACCCAGTCTTGGCTG
TGCAGATAAATCAAGACAAGAATTTTGCCTTTTGGAGTCCGGTCAGTGGATGAGACGACCCAGGCCAT
GGCATTGATGGCATCATCTTCCAGGGCCAGTCATTGAAGATTCGAAGGCCTCATGACTATCAGCCATTG
CCTGGCATGTGAGAGAACCCTCTGTTTATGTGCCTGGAGTTGTATCCACGGTAGTCCAGATTCTGCC
ACAAGCTGTTTCGCGGGTTTGCCTAATTACCTAAATGATGACCAGGTAAGAGCTGCTGACATCCTT
TGGGCCTCTCAAGGCCTCAACTTGGTTAAGGATAGTGCCACAGGGCTCTCAAGGGCTATGCCTTCTGT
GAGTACGTGGACATCAACGTACAGATCAGGCCATTGCGGGGCTGAATGGGATGCAGCTAGGGGACAAGA
AGCTGCTTGTCCAGAGGGCGAGTGTGGGAGCCAAGAATGCCACGCTGAGCACCATCAATCAGACACCTGT
GACCCCTCAAGTGCCCGGCTGATGAGCTCTCAGGTGAGATGGGCGGTACCCCAACTGAGGTCCTGTGC
CTCATGAACATGGTGTGCTGAGGAGCTGCTGGACGATGAGGAGATGAGGAGATTGTAGAGGACGTAC
GAGACGAGTGCAGCAAGTATGGGTTGGTCAAATCCATTGAAATCCCCGCCCCGTGGACGGCGTCGAGGT
GCCTGGCTGTGAAAGATCTTCGTGGAGTTCACCTCTGTGTTGACTGCCAGAAAGCCATGCAGGGTCTA
ACCGGTCGCAAGTTCGCCAACAGAGTGGTGGTCAAAAATACTGTGACCCTGATTCTTACCACCGTCGGG
ACTTCTGG

ACGCGTACGCGGCCGCTCGAGCAGAAACTCATCTCAGAAGAGGATCTGGCAGCAATGATATCCTGGATT
ACAAGGATGACGACGATAAGGTTTAA



[View online »](#)

Protein Sequence: >MR204312 protein sequence
Red=Cloning site Green=Tags(s)

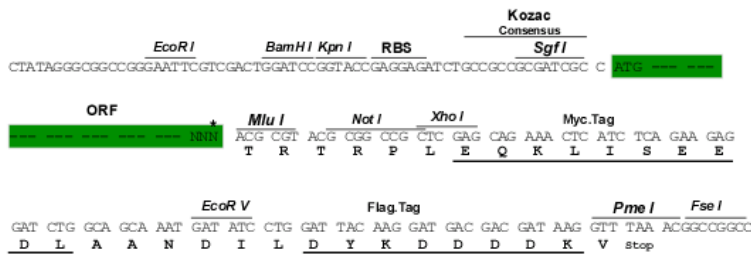
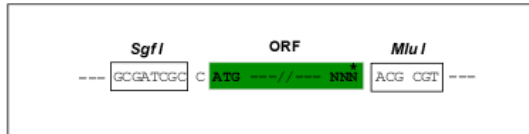
MDFNFNAQMRLGGLTQAPGNPVLAVQINQDKNFAFLEFRSVDETTQAMAFDGIIFQGQSLKIRRPDHYQPL
 PGMPSENPSVYVPGVVSTVVPDSAHKLF IGGLPNYLNDQVKELLTSFGPLKAFNLVKDSATGLSKGYAFC
 EYVDINVTQDAIAGLNGMQLGDKLLVQRASVGAKNATLSTINQTPVTLQVPGLMSSQVQMGHPTEVLC
 LMNMVLP EELL DDEEYEEIVEDVRDECSKYGLVKSIEIPRPVDGVEVPGCGKIFVEFTSVFDCQKAMQGL
 TGRKFANR VVVTKYCDPDSYHRRDFW

TRTRPLEQKLISEEDLAANDILDYKDDDDKV

Restriction Sites: SgfI-MluI

Cloning Scheme:

Cloning sites used for ORF Shuttling:



* The last codon before the Stop codon of the ORF

ACCN: NM_133671

ORF Size: 921 bp

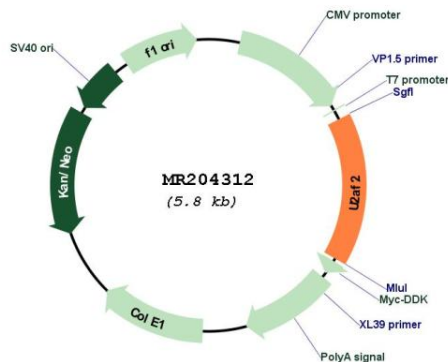
OTI Disclaimer: The molecular sequence of this clone aligns with the gene accession number as a point of reference only. However, individual transcript sequences of the same gene can differ through naturally occurring variations (e.g. polymorphisms), each with its own valid existence. This clone is substantially in agreement with the reference, but a complete review of all prevailing variants is recommended prior to use. [More info](#)

OTI Annotation: This clone was engineered to express the complete ORF with an expression tag. Expression varies depending on the nature of the gene.

Components: The ORF clone is ion-exchange column purified and shipped in a 2D barcoded Matrix tube containing 10ug of transfection-ready, dried plasmid DNA (reconstitute with 100 ul of water).

Reconstitution Method:	<ol style="list-style-type: none">1. Centrifuge at 5,000xg for 5min.2. Carefully open the tube and add 100ul of sterile water to dissolve the DNA.3. Close the tube and incubate for 10 minutes at room temperature.4. Briefly vortex the tube and then do a quick spin (less than 5000xg) to concentrate the liquid at the bottom.5. Store the suspended plasmid at -20°C. The DNA is stable for at least one year from date of shipping when stored at -20°C.
RefSeq:	NM_133671.1 , NP_598432.1
RefSeq Size:	2190 bp
RefSeq ORF:	1416 bp
Locus ID:	22185
Cytogenetics:	7 A1
MW:	33.8 kDa
Gene Summary:	Plays a role in pre-mRNA splicing and 3'-end processing. By recruiting PRPF19 and the PRP19C/Prp19 complex/NTC/Nineteen complex to the RNA polymerase II C-terminal domain (CTD), and thereby pre-mRNA, may couple transcription to splicing. Required for the export of mRNA out of the nucleus, even if the mRNA is encoded by an intron-less gene. Positively regulates pre-mRNA 3'-end processing by recruiting the CFIm complex to cleavage and polyadenylation signals.[UniProtKB/Swiss-Prot Function]

Product images:



Circular map for MR204312