

## Product datasheet for MR204239

### Rpp40 (NM\_145938) Mouse Tagged ORF Clone

#### Product data:

Product Type:	Expression Plasmids
Product Name:	Rpp40 (NM_145938) Mouse Tagged ORF Clone
Tag:	Myc-DDK
Symbol:	Rpp40
Synonyms:	D8Bwg1265e; Rnasep1
Mammalian Cell Selection:	Neomycin
Vector:	pCMV6-Entry (PS100001)
E. coli Selection:	Kanamycin (25 ug/mL)
ORF Nucleotide Sequence:	>MR204239 ORF sequence Red=Cloning site Blue=ORF Green=Tags(s)

TTTTGTAATACGACTCACTATAGGGCGGCCGGAATTCGTCGACTGGATCCGGTACCGAGGAGATCTGCC  
GCC**CGATCGCC**

ATGGACATTGGACCCTATTACTCTGTGAAGAACTTACCTCTTCATGAATTAATTACACACGAGTTCATCA  
ACACCTTTGTAAGAAAGGTTTCATTCTCTGCATTAACATAACAATACAAGTATTGATGAGGATAATACTGT  
TGCTCTCCTACCAAATGGGAAATTAATTTTATCACTAGATAAAGATACTACGAAGAAACCGGACTTCAA  
GGTCGTCCATCTCGGTATTCTGGCAGAAAAAGTATGAAGTTTGCATTTCCATTGACCTAATGGATTTAT  
CCCTTAACCTGGATTCTAAGAAGTACAGAAGAATATCTTGGTCCTCAAAGAGAAGAAGCCTTTGAAGTT  
TGATTTCCTTTTGGCTTGGCATCTACAGGTACAGAAGAATCAACAATGATGTCGTAATTTCCAAATAC  
CAAATTCAGGAGCATCAGCCCAAAGTGGCATTGAGCACAGTGAGAGAGCTGCAGTGCCCAAGTGTGCGGA  
GCAGCGGGCTTGCAGGAGAGCCGGAGGAGGCTGCAGTGCCCTGGAGTTCTTTGACTGGCTTGGTGTGT  
CTTCTGCAGTGCGGACCTAAATAACGAGCCTTATAACTTCATATCAACCTACTGCTGTCCCAGCCAAGC  
GCCGTGGTAGCCCAAGCTTTTCTGTGTACAATCACAGGTTTCATATTGCCAGAGAAGATACATGTCTTC  
TGGAACAGCTGTGTCACTACTTCGATGAACAAAGTTGGCTCCATGGGTACCTTGACAGTTCAAGGCTT  
TGCAGACAGCCCCGTTGCCTGGAGAGAGAAGGAACATGGCTTCCATAAAGGAGGCCGAGCACTTGTACAAT  
TTTGTGGTTTTCAATAATCAGGACTATTGGCTTCAGATGGCTGTTGGGGCAAATGATGACTGCCACCA

**ACGCGT**ACGCGGCCGCTCGAGCAGAAACTCATCTCAGAAGAGGATCTGGCAGCAAATGATATCCTGGATT  
ACAAGGATGACGACGATAAGGTTTAA



[View online »](#)

**Protein Sequence:** >MR204239 protein sequence  
 Red=Cloning site Green=Tags(s)

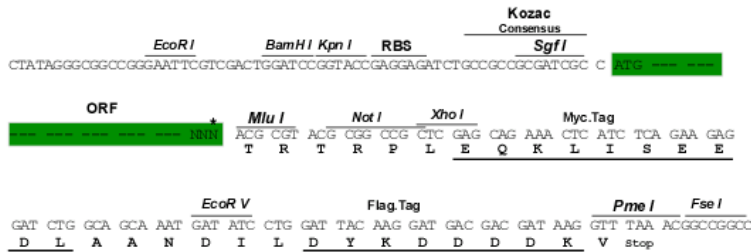
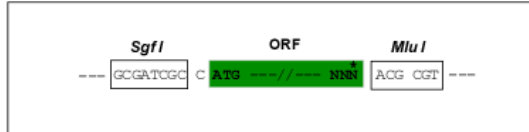
MDIGPYYSVKNLPLHELITHEFINTFVKKGSFSALTYNTSIDEDNTVALLPNGKLIILSLDKDTEETGLQ  
 GRPSRYSGRKSMTKVFVISIDLMDLSLNLDSKKYRRISSWFKKPLKDFLLAWHPTGTEESTMMSYFSKY  
 QIQEHQPKVALSTVRELQCPVLRSSGLAGEPEEACSALEFFDWLGAVFCSADLNNEPYNFISTYCCPQPS  
 AVVAQAFLLCTITGFILPEKIHVLLLEQLCHYFDEPKLAPWVTLTVQGFADSPVAWREKEHGFKGGEHLYN  
 FVVFNQDYWLQMAVGANDDCPP

TRTRPLEQKLISEEDLAANDILDYKDDDDKV

**Restriction Sites:** SgfI-MluI

**Cloning Scheme:**

Cloning sites used for ORF Shuttling:



\* The last codon before the Stop codon of the ORF

**ACCN:** NM\_145938

**ORF Size:** 912 bp

**OTI Disclaimer:** The molecular sequence of this clone aligns with the gene accession number as a point of reference only. However, individual transcript sequences of the same gene can differ through naturally occurring variations (e.g. polymorphisms), each with its own valid existence. This clone is substantially in agreement with the reference, but a complete review of all prevailing variants is recommended prior to use. [More info](#)

**OTI Annotation:** This clone was engineered to express the complete ORF with an expression tag. Expression varies depending on the nature of the gene.

**Components:** The ORF clone is ion-exchange column purified and shipped in a 2D barcoded Matrix tube containing 10ug of transfection-ready, dried plasmid DNA (reconstitute with 100 ul of water).

**Reconstitution Method:**

1. Centrifuge at 5,000xg for 5min.
2. Carefully open the tube and add 100ul of sterile water to dissolve the DNA.
3. Close the tube and incubate for 10 minutes at room temperature.
4. Briefly vortex the tube and then do a quick spin (less than 5000xg) to concentrate the liquid at the bottom.
5. Store the suspended plasmid at -20°C. The DNA is stable for at least one year from date of shipping when stored at -20°C.

**RefSeq:** [NM\\_145938.1](#)

**RefSeq Size:** 2736 bp

**RefSeq ORF:** 1092 bp

**Locus ID:** 208366

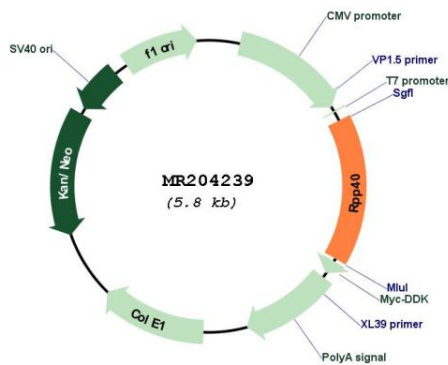
**UniProt ID:** [Q8R1F9](#)

**Cytogenetics:** 13 A3.3

**MW:** 34.5 kDa

**Gene Summary:** Component of ribonuclease P, a ribonucleoprotein complex that generates mature tRNA molecules by cleaving their 5'-ends. Also a component of the MRP ribonuclease complex, which cleaves pre-rRNA sequences.[UniProtKB/Swiss-Prot Function]

### Product images:



Circular map for MR204239