

## Product datasheet for MR204229

### Gpbp1 (BC016083) Mouse Tagged ORF Clone

#### Product data:

|                           |   |
|---------------------------|---|
| Product Type:             | Expression Plasmids   |
| Product Name:             | Gpbp1 (BC016083) Mouse Tagged ORF Clone                           |
| Tag:                      | Myc-DDK   |
| Symbol:                   | Gpbp1   |
| Synonyms:                 | mGPBP, Gpbp   |
| Mammalian Cell Selection: | Neomycin  |
| Vector:                   | pCMV6-Entry (PS100001)  |
| E. coli Selection:        | Kanamycin (25 ug/mL)  |
| ORF Nucleotide Sequence:  | >MR204229 ORF sequence<br>Red=Cloning site Blue=ORF Green=Tags(s) |

TTTTGTAATACGACTCACTATAGGGCGGCCGGAATTCGTCGACTGGATCCGGTACCGAGGAGATCTGCC  
GCC**CGCATCGCC**

ATGCTGGTCATTAAGAAAGGTAATACAAAAGACTTACAGCTATCTGGATCCCAGTAGCAGGAAACCTCC  
AGTCACAGCCAGTTAAGAATGGAAGTGGTCCAAGTGTATAAAGGCTTAGTCCCCAACCTGCTGTTCC  
ACCTACAAAACCTACACAATGGAAAAGCCAACTAAAGAAAACAAAGTCGGGACTTCTTTTCTCATGAA  
TCTACATATGGTGTGGCAACTTAATACTTTAAGTCAACGGCCAAGAATATTAGTCCATCAACAATT  
CAGTGAAGAGTGAATCGTTCAAATTTCTTTCGCCTGTTGACAACTTAATCAGCAGCCTCGTTAAC  
TAAACTGACACGAATGCGCAGCGATAAAAAGAGTGAATTTTTGAAAGCATTGAAAAGGGACAGAGTGGAG  
GAGGAACATGAAGATGAAAGTCATGCTGGCTCAGAGAAGGACGACGACTCATTTAATTTGCATAACAGCA  
ATACTACTACCAAGAAAGAGATATAAACAGAACTTTGATGAAAATGAAATCCACAGGAGAACGGCAA  
TGCCCTCGATGATTTCTCAACAGATCATTCTGTTCTCGACTTTCCACAACTGATGTTCTTTCCAGTTCA  
CTAGAGGCAGAACACAGATTATTAAGAAATGGGCTGGCAGGAAGACAGTGAATGATGAAACATGTG  
CTCCCTTAACTGAGGATGAAATGAGAGAATCCAAGTTATTAGTGAACAGTTACAGAAGAATGGTCTGAG  
AAAAATGGTATTTTAAAAATGGCCTGATCTGTGACTTCAAGTTGGACCCTGGAAAAACAGCACTTTC  
AAACCCACAATTGAGAATGATGACACAGAGACAAGTAGCAGCGACACGTCCGATGATGACGATGTG

**ACGCGT**ACGCGGCCGCTCGAGCAGAAACTCATCTCAGAAGAGGATCTGGCAGCAAATGATATCCTGGATT  
ACAAGGATGACGACGATAAGGTTTAA



[View online »](#)

**Protein Sequence:** >MR204229 protein sequence  
Red=Cloning site Green=Tags(s)

MLVIKKGNTKDLQLSGFPVAGNLQSQPVKNGTGPSVYKGLVPKPAVPPTKPTQWKSQTENKVGTSFSHE  
 STYGVGNFNTFKSTAKNISPTNSVKECNRSNSSSPVDKLNQQPRLTKLTRMSDKKSEFLKALKRDRVE  
 EEHEDESHAGSEKDDDSFNLHNSNTTHQERDINRNFENEIPQENGNASMISQQIIRSSTFPQTDVLS  
 LEAEHRLKEMGWQEDSENDETCAPL TEDEMREFQVISEQLQKNGLRKNGLKNGLICDFKFGPWKNSTF  
 KPTIENDDTETSSSDTSDDDDV

TRTRPLEQKLISEEDLAANDILDYKDDDDKV

**Restriction Sites:** SgfI-MluI

**Cloning Scheme:**

Cloning sites used for ORF Shuttling:



\* The last codon before the Stop codon of the ORF

**ACCN:** BC016083

**ORF Size:** 906 bp

**OTI Disclaimer:** The molecular sequence of this clone aligns with the gene accession number as a point of reference only. However, individual transcript sequences of the same gene can differ through naturally occurring variations (e.g. polymorphisms), each with its own valid existence. This clone is substantially in agreement with the reference, but a complete review of all prevailing variants is recommended prior to use. [More info](#)

**OTI Annotation:** This clone was engineered to express the complete ORF with an expression tag. Expression varies depending on the nature of the gene.

**Components:** The ORF clone is ion-exchange column purified and shipped in a 2D barcoded Matrix tube containing 10ug of transfection-ready, dried plasmid DNA (reconstitute with 100 ul of water).

**Reconstitution Method:**

1. Centrifuge at 5,000xg for 5min.
2. Carefully open the tube and add 100ul of sterile water to dissolve the DNA.
3. Close the tube and incubate for 10 minutes at room temperature.
4. Briefly vortex the tube and then do a quick spin (less than 5000xg) to concentrate the liquid at the bottom.
5. Store the suspended plasmid at -20°C. The DNA is stable for at least one year from date of shipping when stored at -20°C.

**RefSeq:** [BC016083](#), [AAH16083](#)

**RefSeq Size:** 1960 bp

**RefSeq ORF:** 908 bp

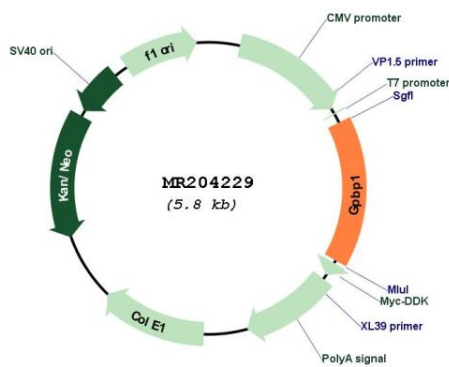
**Locus ID:** 73274

**Cytogenetics:** 13 D2.2

**MW:** 33.9 kDa

**Gene Summary:** Functions as a GC-rich promoter-specific transactivating transcription factor. [UniProtKB/Swiss-Prot Function]

**Product images:**



Circular map for MR204229