

Product datasheet for MR204222

Srm (NM_009272) Mouse Tagged ORF Clone

Product data:

Product Type:	Expression Plasmids
Product Name:	Srm (NM_009272) Mouse Tagged ORF Clone
Tag:	Myc-DDK
Symbol:	Srm
Synonyms:	AA407669; SpdST; SpdSy
Mammalian Cell Selection:	Neomycin
Vector:	pCMV6-Entry (PS100001)
E. coli Selection:	Kanamycin (25 ug/mL)
ORF Nucleotide Sequence:	>MR204222 representing NM_009272 Red=Cloning site Blue=ORF Green=Tags(s)

CTATAGGGCGCCCGGAATTCGTCGACTGGATCCGGTACCGAGGAGATCTGCCGCCGCGATCGCCGGCGC
GCC

ATGGAGCCTGGCCCCGACGGCCAGCCGCGCCCGCCCGCCCATCCGTGAGGGCTGGTTCGAGAGA
CCTGCAGCCTGTGGCCCGCCAGGCCCTGTCGCTGCAAGTGGAGCAGCTGCTTACCACCGGCGATCGCG
GTACCAAGACATCCTCGTCTTCCGAGTAAAACCTACGGCAACGTGCTGGTCTGGATGGCGTCATCCAG
TGTAAGGAGGGATGAGTTCTCCTACCAGGAGATGATCGCCAACCTGCCGCTCTGCAGCCACCCCAACC
CGCGGAAGGTGCTGATCATCGGGGTGGAGATGGGGCGTCTACGGGAAGTGGTAAGCACCCCTCTGT
GGAGTCGGTGGTCCAGTGCAGATTGATGAGGATGTCATTGAAGTCTCTAAGAAGTCTCTGCCTGGCATG
GCCGTTGGCTTCTCCAGCTCAAAGCTGACTCTCCACGTGGGCGATGGCTTTGAGTTCATGAAACAGAACC
AAGATGCCTTTGACGTATCATCACCAGCTCCTCAGACCCATGGGCCCTGCTGAGAGCCTCTTCAAGGA
GTCCTATTACCAGCTCATGAAGACAGCACTCAAAGAAGATGGCATCCTGTGCTGCCAGGGTGGTGGCCAG
TGGCTGCACCTGGACCTCATCAAGGAGATGAGGCACTTCTGCAAATCTCTTCCCGTGGTGGACTACG
CCTACTGTAGCATTCTACCTATCCCAGCGCCAGATCGGCTTATGCTGTGTAGCAAAAACCCGAGCAC
CAACTTCCGGGAGCCAGTGCAGCAGTTGACACAGGCCAGGTGGAGCAGATGCAGCTGAAATACTATAAC
TCGGACATGCACCGTGGCCCTTCGTAAGTGCAGGATTCACCCGGAAGGCCCTCAATGACATAAGC

ACGCGTACGCGGCCGCTCGAGCAGAAACTCATCTCAGAAGAGGATCTGGCAGCAAATGATATCCTGGATT
ACAAGGATGACGACGATAAGGTTTAA



[View online »](#)

Protein Sequence: >MR204222 representing NM_009272
 Red=Cloning site Green=Tags(s)

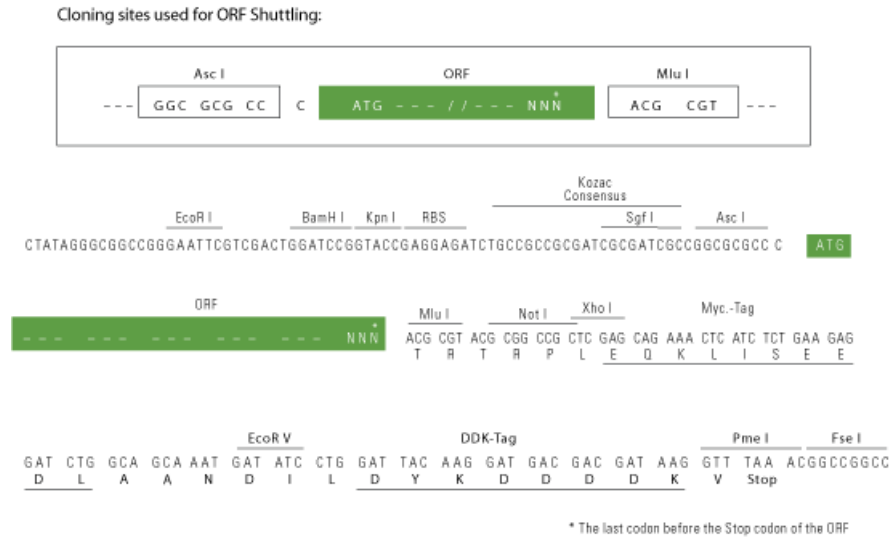
MEPGPDGPAAPGPAAIREGWFRETCSLWPGQALSLQVEQLLHRRSRVYQDILVFRSKTYGNVLVLDGVIQ
 CTERDEFSYQEMIANLPLCSHPNPRKVLIIIGGGDGGVLRVVKHPSVSVVQCEIDEDVIEVSKKFLPGM
 AVGFSSSKLTLHVGDGFEFMKQNQDAFDVITDSSDPMGPAESLFKESYYQLMKTALKEDGILCCQGECC
 WLHLDLIKEMRHFCKSLFPVVDYAYCSIPTYPSGQIGFMLCSKNPSTNFRPVPVQLTQAQVEQMLKYYN
 SDMHRAAFVLPFTRKALNDIS

TRTRPLEQKLISEEDLAANDILDYKDDDDKV

Chromatograms: https://cdn.origene.com/chromatograms/mm9039_f06.zip

Restriction Sites: AscI-MluI

Cloning Scheme:



ACCN: NM_009272

ORF Size: 906 bp

OTI Disclaimer: The molecular sequence of this clone aligns with the gene accession number as a point of reference only. However, individual transcript sequences of the same gene can differ through naturally occurring variations (e.g. polymorphisms), each with its own valid existence. This clone is substantially in agreement with the reference, but a complete review of all prevailing variants is recommended prior to use. [More info](#)

OTI Annotation: This clone was engineered to express the complete ORF with an expression tag. Expression varies depending on the nature of the gene.

Components: The ORF clone is ion-exchange column purified and shipped in a 2D barcoded Matrix tube containing 10ug of transfection-ready, dried plasmid DNA (reconstitute with 100 ul of water).

Reconstitution Method:

1. Centrifuge at 5,000xg for 5min.
2. Carefully open the tube and add 100ul of sterile water to dissolve the DNA.
3. Close the tube and incubate for 10 minutes at room temperature.
4. Briefly vortex the tube and then do a quick spin (less than 5000xg) to concentrate the liquid at the bottom.
5. Store the suspended plasmid at -20°C. The DNA is stable for at least one year from date of shipping when stored at -20°C.

RefSeq: [NM_009272.4](#), [NP_033298.1](#)

RefSeq Size: 1328 bp

RefSeq ORF: 909 bp

Locus ID: 20810

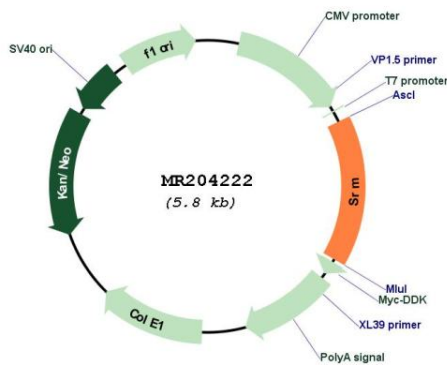
UniProt ID: [Q64674](#)

Cytogenetics: 4 E2

MW: 34.4 kDa

Gene Summary: Catalyzes the production of spermidine from putrescine and decarboxylated S-adenosylmethionine (dcSAM). Has a strong preference for putrescine as substrate, and has very low activity towards 1,3-diaminopropane. Has extremely low activity towards spermidine (By similarity).[UniProtKB/Swiss-Prot Function]

Product images:



Circular map for MR204222