

## Product datasheet for **MR204169**

### Qprt (NM\_133686) Mouse Tagged ORF Clone

#### Product data:

Product Type:	Expression Plasmids
Product Name:	Qprt (NM_133686) Mouse Tagged ORF Clone
Tag:	Myc-DDK
Symbol:	Qprt
Synonyms:	2410027J01Rik; A1647766; QPRTase
Mammalian Cell Selection:	Neomycin
Vector:	pCMV6-Entry (PS100001)
E. coli Selection:	Kanamycin (25 ug/mL)
ORF Nucleotide Sequence:	>MR204169 ORF sequence Red=Cloning site Blue=ORF Green=Tags(s)

TTTTGTAATACGACTCACTATAGGGCGGCCGGAATTCGTCGACTGGATCCGGTACCGAGGAGATCTGCC  
GCC**CGATCGCC**

ATGGACCCTGAAGCCTGCAGCTCCTGTTACCCCTACAACCTTGGCAGCCCTGGCGAACAGCTGGCTGC  
AAGAGGACTGCCCGGCCCTCAATTTTGCATCCTTGTTACCGGGTCGGCACCCCTCGCAGGCTGTGCTGTG  
GGCCAAATCTCCTGGGGTCTGGCAGGGCGACCCTTCTTTGACGCCATCTTCACTCAACTCAACTGCCAA  
GTGTCTGGTTCCTCCCGAGGGATCGAAGCTGGTACCTGTGGTCAAGGTGGCAGAGGTCAAGGGACCTG  
CCCACCACCTGCTCTTGGGGAACGGGTGGCTCTTAACACCCTGGCCCGCTGCAGTGGGATTGCCAGCGC  
GGCAGCGACAGCTGTGGAGGTGGCCAGGAGCACCAGCTGGACTGGACACGTGGCGGGCACGAGGAAGACG  
ACACCTGGGTTCCGACTGGTGGAGAAGTATGGGCTCCAAGTAGGCGGGGCAGCATGCCACCCTACGACC  
TGGGAGGGATGGTATGGTAAAAGACAACCATGTAGTGGCGGCCGGCAGCATGAAAGGGCAGTGTGAA  
GGCTCGGCAGGCAGCCGGGTTTTCCCTGAAGGTAGAGGTGGAATGTAGCAGCCTGGAGGAGGCCCTTCGG  
GCAGCAGAGGCTGGGCTGACCTGGTAATGCTGGACAACCTTAAGCCTGAGGAGCTGCACCCACAGCAG  
CTACACTTAAAGCCAGATTCCCCAGCGTGTGGTGAAGCCAGTGGGGCGTCACACTGGACAACCTCAC  
CCAGTTCTGTGGACACACATTGACGTATCTCGTTGGGAATGCTGACCCAGGCTGCTCCAGCCCTGGAT  
TTTTCCCTCAAACCTGTTTGTGAAGGAGATACCCAGTGCCTCAGCTCGCCGGTTC

**ACGCGT**ACGCGGCCGCTCGAGCAGAAACTCATCTCAGAAGAGGATCTGGCAGCAAATGATATCCTGGATT  
ACAAGGATGACGACGATAAGGTTAA



[View online »](#)

**Protein Sequence:** >MR204169 protein sequence  
Red=Cloning site Green=Tags(s)

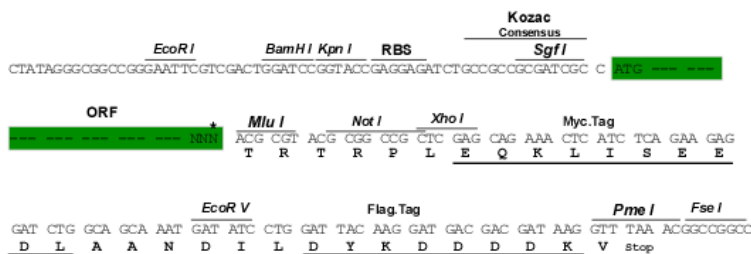
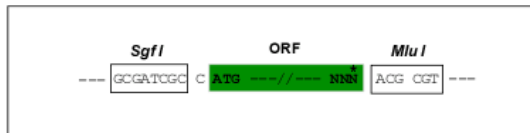
MDPEGLQLLLPPTTLAALANSWLQEDCPGLNFASLVTGSAPSQAVLWAKSPGVLAGRPFDDAIFTQLNCQ  
 VSWFLPEGSKLVPVVKVAEVKGPAAHLLLGERVALNTLARCSGIASAAATAVEVARSTGWTGHVAGTRKT  
 TPGFRLVEKYGLQVGAACHRYDLGGMVMVKDNHVVAAAGSMERAVLKARQAAGFSLKVEVECCSLEEAFR  
 AAEAGADLVMLDNFKPEELHPTAATLKARFSPSVSEASGGVTLDNLTQFCGTHIDVISLGMLTQAAPALD  
 FSLKLF AEGDTPVPHARRF

TRTRPLEQKLISEEDLAANDILDYKDDDDKV

**Restriction Sites:** SgfI-MluI

**Cloning Scheme:**

Cloning sites used for ORF Shuttling:



\* The last codon before the Stop codon of the ORF

**ACCN:** NM\_133686

**ORF Size:** 900 bp

**OTI Disclaimer:** The molecular sequence of this clone aligns with the gene accession number as a point of reference only. However, individual transcript sequences of the same gene can differ through naturally occurring variations (e.g. polymorphisms), each with its own valid existence. This clone is substantially in agreement with the reference, but a complete review of all prevailing variants is recommended prior to use. [More info](#)

**OTI Annotation:** This clone was engineered to express the complete ORF with an expression tag. Expression varies depending on the nature of the gene.

**Components:** The ORF clone is ion-exchange column purified and shipped in a 2D barcoded Matrix tube containing 10ug of transfection-ready, dried plasmid DNA (reconstitute with 100 ul of water).

**Reconstitution Method:**

1. Centrifuge at 5,000xg for 5min.
2. Carefully open the tube and add 100ul of sterile water to dissolve the DNA.
3. Close the tube and incubate for 10 minutes at room temperature.
4. Briefly vortex the tube and then do a quick spin (less than 5000xg) to concentrate the liquid at the bottom.
5. Store the suspended plasmid at -20°C. The DNA is stable for at least one year from date of shipping when stored at -20°C.

**RefSeq:** [NM\\_133686.1](#), [NP\\_598447.1](#)

**RefSeq Size:** 1211 bp

**RefSeq ORF:** 900 bp

**Locus ID:** 67375

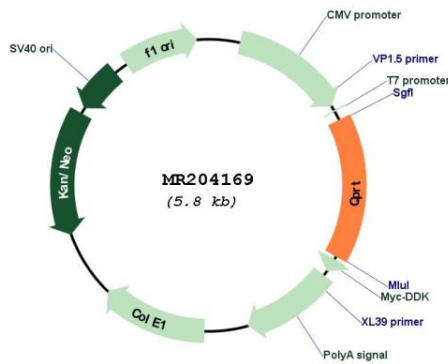
**UniProt ID:** [Q91X91](#)

**Cytogenetics:** 7 F3

**MW:** 31.5 kDa

**Gene Summary:** Involved in the catabolism of quinolinic acid (QA).[UniProtKB/Swiss-Prot Function]

**Product images:**



Circular map for MR204169