

Product datasheet for MR204114L3

Fbxo2 (NM_176848) Mouse Tagged Lenti ORF Clone

Product data:

Product Type:	Expression Plasmids
Product Name:	Fbxo2 (NM_176848) Mouse Tagged Lenti ORF Clone
Tag:	Myc-DDK
Symbol:	Fbxo2
Synonyms:	FBG1; Fbs1; Fbs2; FBX2; NFB42; Prpl4
Mammalian Cell Selection:	Puromycin
Vector:	pLenti-C-Myc-DDK-P2A-Puro (PS100092)
E. coli Selection:	Chloramphenicol (34 ug/mL)
ORF Nucleotide Sequence:	The ORF insert of this clone is exactly the same as(MR204114).
Restriction Sites:	SgfI-MluI
Cloning Scheme:	

Cloning sites used for ORF Shuttling:



* The last codon before the Stop codon of the ORF.

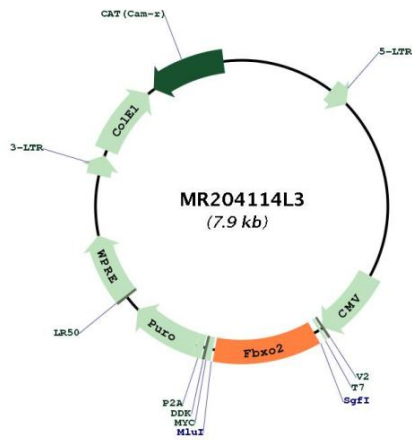
ACCN:	NM_176848
ORF Size:	894 bp



[View online »](#)

OTI Disclaimer:	The molecular sequence of this clone aligns with the gene accession number as a point of reference only. However, individual transcript sequences of the same gene can differ through naturally occurring variations (e.g. polymorphisms), each with its own valid existence. This clone is substantially in agreement with the reference, but a complete review of all prevailing variants is recommended prior to use. More info
OTI Annotation:	This clone was engineered to express the complete ORF with an expression tag. Expression varies depending on the nature of the gene.
Components:	The ORF clone is ion-exchange column purified and shipped in a 2D barcoded Matrix tube containing 10ug of transfection-ready, dried plasmid DNA (reconstitute with 100 ul of water).
Reconstitution Method:	<ol style="list-style-type: none">1. Centrifuge at 5,000xg for 5min.2. Carefully open the tube and add 100ul of sterile water to dissolve the DNA.3. Close the tube and incubate for 10 minutes at room temperature.4. Briefly vortex the tube and then do a quick spin (less than 5000xg) to concentrate the liquid at the bottom.5. Store the suspended plasmid at -20°C. The DNA is stable for at least one year from date of shipping when stored at -20°C.
RefSeq:	NM_176848.1 , NP_789818.1
RefSeq Size:	1260 bp
RefSeq ORF:	894 bp
Locus ID:	230904
UniProt ID:	Q80UW2
Cytogenetics:	4 78.68 cM
Gene Summary:	Substrate recognition component of a SCF (SKP1-CUL1-F-box protein) E3 ubiquitin-protein ligase complex that mediates the ubiquitination and subsequent proteasomal degradation of target proteins. Involved in the endoplasmic reticulum-associated degradation pathway (ERAD) for misfolded luminal proteins by recognizing and binding sugar chains on unfolded glycoproteins that are retrotranslocated into the cytosol and promoting their ubiquitination and subsequent degradation. Prevents formation of cytosolic aggregates of unfolded glycoproteins that have been retrotranslocated into the cytosol. Able to recognize and bind denatured glycoproteins, preferentially those of the high-mannose type.[UniProtKB/Swiss-Prot Function]

Product images:



Circular map for MR204114L3