

## Product datasheet for **MR204082**

### Blvra (NM\_026678) Mouse Tagged ORF Clone

#### Product data:

Product Type:	Expression Plasmids
Product Name:	Blvra (NM_026678) Mouse Tagged ORF Clone
Tag:	Myc-DDK
Symbol:	Blvra
Synonyms:	0610006A11Rik; 2500001N03Rik; Blvr
Mammalian Cell Selection:	Neomycin
Vector:	pCMV6-Entry (PS100001)
E. coli Selection:	Kanamycin (25 ug/mL)
ORF Nucleotide Sequence:	>MR204082 ORF sequence Red=Cloning site Blue=ORF Green=Tags(s)

TTTTGTAATACGACTCACTATAGGGCGGCCGGAATTCGTCGACTGGATCCGGTACCGAGGAGATCTGCC  
GCC**CGATCGCC**

ATGAGTACTGAGCCAAAGAGGAAATTTGGTGTGGTAGTGGTTGGTGTGGCAGAGCTGGCTCTGTGAGGA  
TAAGGGACTCGAAGGATCCACACTCTTCAGCATTCTAAACCTGATTGGATATGTGTCCAGACGAGA  
TGGGAGCCTTGATAATGTACGGCAGATTTCTTTGGAAGATGCTCTCCGCAGCCAAGAGGTTGATGTCGCC  
TATATTTGCACTGAGAGTCCAGCCACGAAGACTATATAAGGCAGTTTCTTCAGGCTGGCAAGCATGTCC  
TCGTGGAATACCCCATGGCATTGTCATTTGCGGCAGCGCAGGAGCTGTGGGAGCTGGCTGCACAGAAAGG  
GAGAGTCTGCATGAGGAGCACATCGAACTCTTGATGGAAGAGTTGCAATTCCTGAAAAGAGAAGTGGCC  
GGGAAGGAGCTGCTAAAAGGATCTCTTCGCTTCACAGCCAGCCCCCTGGAAGAAGAGAAATTTGGCTTCC  
CTGCGTTCACTGGCATTCTCGCCTGACCTGGCTGGTCTCCCTCTTTGGGGAGCTTTCTCTATTCTG  
CACCATGGAAAACCGAAAAGAAGATCAATATATGAAAATGACCGTGCAGCTCGAGACCCAGAACAAAAGT  
CCATTATCATGGATTGAAGAGAAAGGCCCTGGCTTAAAAGGAACAGACATATAAGCATCCACTTCAAAT  
CTGGGTCTTGGAGGAAGTGCCAAATGTAGGAGTCAATAAGAACATTTTCTGAAAGATCAGGATATATT  
TATCCAGAAGCTCTTGGGCCAGGTCTCTGCAGAGGACCTGGCTGCTGAGAAGAAGCGCATCTGCATTGC  
CTGGAGCTGGCCAGCGACATCCAGAGGCTGTGCCACCGGAAGCAG

**ACGCGT**ACGCGGCCGCTCGAGCAGAAACTCATCTCAGAAGAGGATCTGGCAGCAAATGATATCTGGATT  
ACAAGGATGACGACGATAAGGTTTAA



[View online »](#)

**Protein Sequence:** >MR204082 protein sequence  
Red=Cloning site Green=Tags(s)

MSTEPKRKFGVVVGVGRAGSVRIRDSKDPHSSAFNLIGYVSRRELGSLDNVRQISLEDALRSQEV DVA  
 YICTESSSHEDYIRQFLQAGKHVLEYPMALSF AAAQELWELAAQKGRVLHEEHIELLMEEFEFLKREVA  
 GKELLKGLRFTASPLEEEKFGFPAFSGISR L TWLVSLFGELSLISATMENRKEDQYMKMTVQLETQNK S  
 PLSWIEEKGPGLKRNHRHSIHFKSGSLEEV PNVGVNKNIFLKDQDIFIQKLLGQVSAEDLAAEK RILHC  
 LELASDIQRLCHRKQ

TRTRPLEQKLISEEDLAANDILDYKDDDDKV

**Restriction Sites:** SgfI-MluI

**Cloning Scheme:**

Cloning sites used for ORF Shuttling:



\* The last codon before the Stop codon of the ORF

**ACCN:** NM\_026678

**ORF Size:** 888 bp

**OTI Disclaimer:** The molecular sequence of this clone aligns with the gene accession number as a point of reference only. However, individual transcript sequences of the same gene can differ through naturally occurring variations (e.g. polymorphisms), each with its own valid existence. This clone is substantially in agreement with the reference, but a complete review of all prevailing variants is recommended prior to use. [More info](#)

**OTI Annotation:** This clone was engineered to express the complete ORF with an expression tag. Expression varies depending on the nature of the gene.

**Components:** The ORF clone is ion-exchange column purified and shipped in a 2D barcoded Matrix tube containing 10ug of transfection-ready, dried plasmid DNA (reconstitute with 100 ul of water).

**Reconstitution Method:**

1. Centrifuge at 5,000xg for 5min.
2. Carefully open the tube and add 100ul of sterile water to dissolve the DNA.
3. Close the tube and incubate for 10 minutes at room temperature.
4. Briefly vortex the tube and then do a quick spin (less than 5000xg) to concentrate the liquid at the bottom.
5. Store the suspended plasmid at -20°C. The DNA is stable for at least one year from date of shipping when stored at -20°C.

**RefSeq:** [NM\\_026678.3](#)

**RefSeq Size:** 1394 bp

**RefSeq ORF:** 888 bp

**Locus ID:** 109778

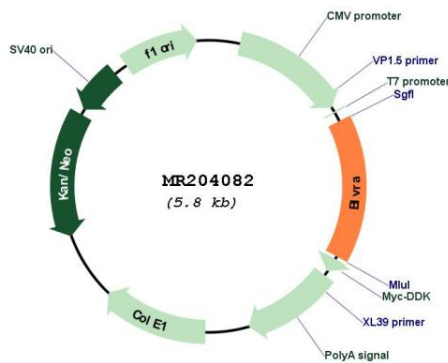
**UniProt ID:** [Q9CY64](#)

**Cytogenetics:** 2 61.76 cM

**MW:** 33.5 kDa

**Gene Summary:** Reduces the gamma-methene bridge of the open tetrapyrrole, biliverdin IX alpha, to bilirubin with the concomitant oxidation of a NADH or NADPH cofactor.[UniProtKB/Swiss-Prot Function]

**Product images:**



Circular map for MR204082